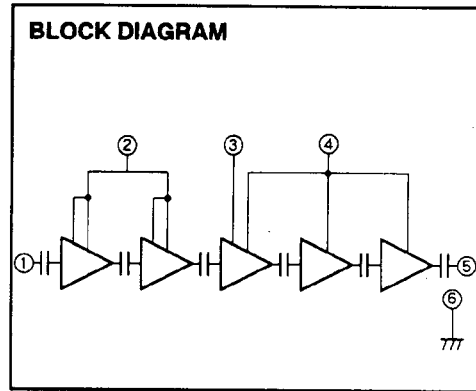
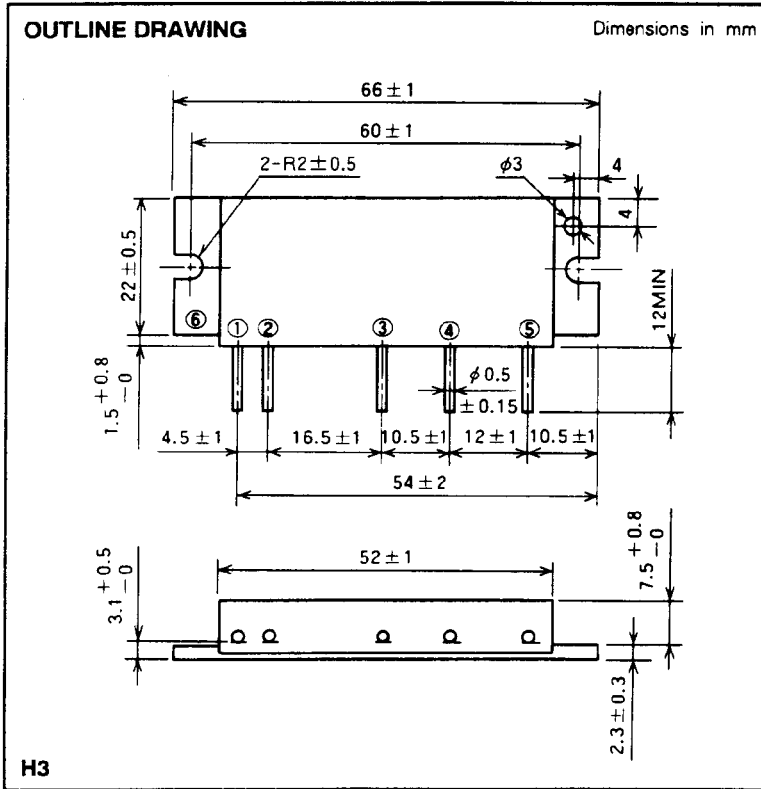


M67775

1465-1477MHz, 13.5V, 7.5W, FM MOBILE RADIO



- PIN :**
- ① Pin : RF INPUT
 - ② Vcc1 : 1st. DC SUPPLY
 - ③ VBB : BASE BIAS SUPPLY
 - ④ Vcc2 : 2nd. DC SUPPLY
 - ⑤ Po : RF OUTPUT
 - ⑥ GND : FIN

ABSOLUTE MAXIMUM RATINGS (Tc = 25°C unless otherwise noted)

Symbol	Parameter	Conditions	Ratings	Unit
Vcc1	Supply voltage		9	V
Vcc2			16	V
VBB	Base bias		8.5	V
Icc	Total current		4	A
P _{in(max)}	Input power	Vcc1 ≤ 8V, Z _G = Z _L = 50 Ω	5	mW
P _{O(max)}	Output power	Z _G = Z _L = 50 Ω	10	W
T _{C(OP)}	Operation case temperature		- 30 to 90	°C
T _{stg}	Storage temperature		- 40 to 110	°C

Note. Above parameters are guaranteed independently.

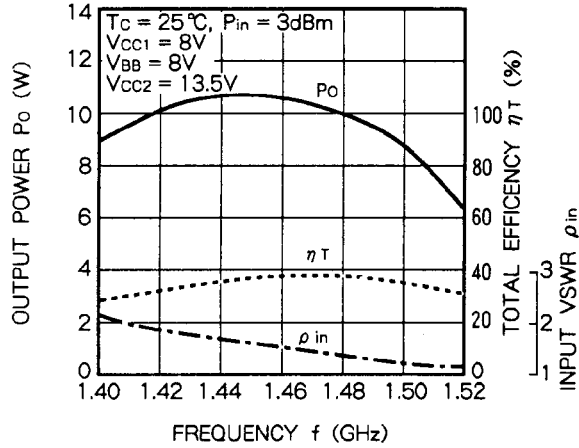
ELECTRICAL CHARACTERISTICS (Tc = 25°C unless otherwise noted)

Symbol	Parameter	Test conditions	Limits		Unit
			Min	Max	
f	Frequency range	Vcc1 = 8V VBB = 8V Vcc2 = 13.5V P _{in} = 2mW Z _G = Z _L = 50 Ω	1465	1477	MHz
P _o	Output power		7.5		W
η _T	Total efficiency		30		%
2fo	2nd. harmonic			- 25	dBc
3fo	3rd. harmonic			- 30	dBc
ρ _{in}	Input VSWR			2.8	-
-	Load VSWR tolerance	VBB = 8V, Vcc2 = 15.2V P _o = 8W (Vcc1 : controlled) P _{in} = 2mW, Z _G = 50 Ω Load VSWR=10:1 (All phase), 5sec.	No degradation or destroy		-

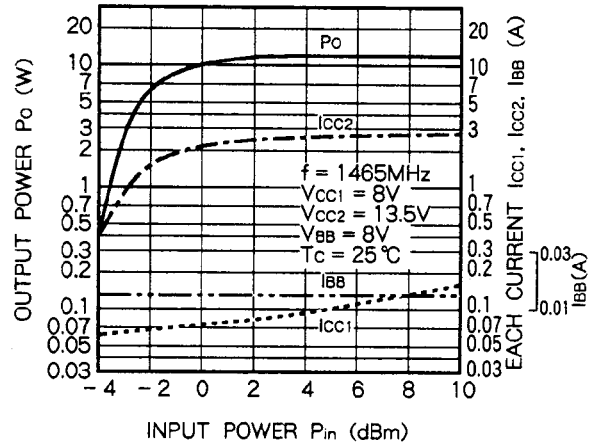
Note. Above parameters, ratings, limits and conditions are subject to change.

TYPICAL PERFORMANCE DATA

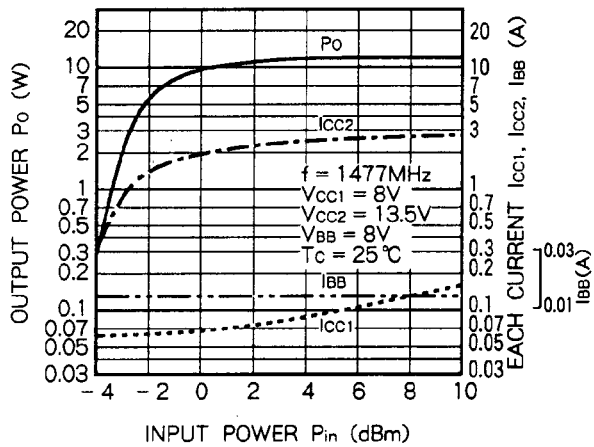
OUTPUT POWER, TOTAL EFFICIENCY, INPUT VSWR VS. FREQUENCY CHARACTERISTICS



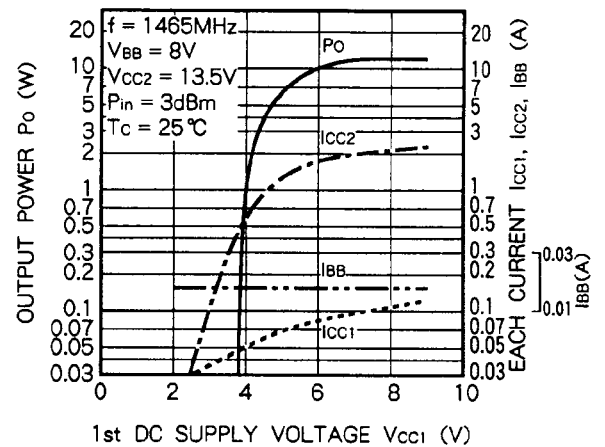
OUTPUT POWER, EACH CURRENT VS. INPUT POWER CHARACTERISTICS



OUTPUT POWER, EACH CURRENT VS. INPUT POWER CHARACTERISTICS



OUTPUT POWER, EACH CURRENT VS. 1st DC SUPPLY VOLTAGE CHARACTERISTICS



OUTPUT POWER, EACH CURRENT VS. 1st DC SUPPLY VOLTAGE CHARACTERISTICS

