

## ADAPTERS

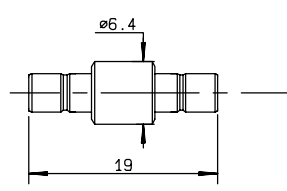


Fig. 1

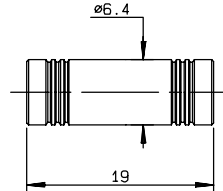


Fig. 2

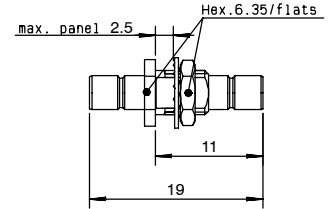


Fig. 3

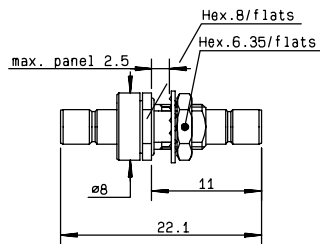


Fig. 4

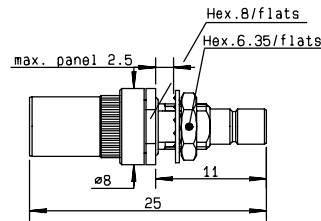


Fig. 5

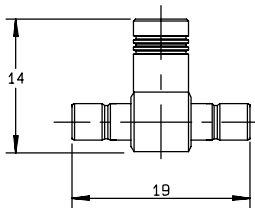


Fig. 6

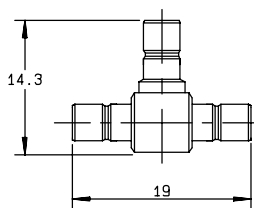


Fig. 7

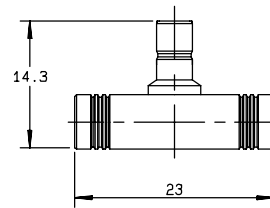


Fig. 8

part number	fig.	captive center contact	panel	finish	note
R114 703 000	1	yes		Gold	male - male
R114 704 000	2	yes		Gold	female - female
R114 720 000	3	yes	P01	Gold	bulkhead male - male
R114 720 020	3	yes	P01	Nickel	bulkhead male - male
R114 753 000	4	yes	P01	Gold	hermetically sealed male - male
R114 754 000*●	5	yes	P01	Gold	hermetically sealed female - male
R114 780 000	6	yes		Gold	tee female / male - male
R114 780 020	6	yes		Nickel	tee female / male - male
R114 781 000	7	yes		Gold	tee male / male - male
R114 783 000*●	8	yes		Gold	tee male / female - female

● upon request

\* packaging: unit