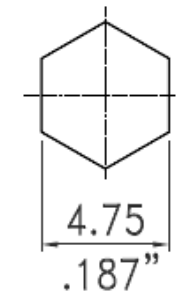


**Recommended Cable Stripping Dimensions**



**Recommended Crimped Dimensions for Ferrule**

ITEM	Description	Material	Finish
4	Ferrule	Brass	Nickel
3	Pin	Brass	Gold
2	Insulator	PTFE	None
1	Body	Brass	Nickel

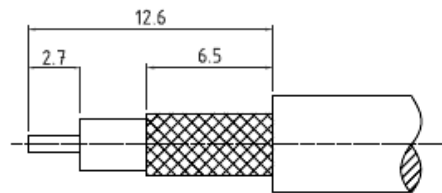
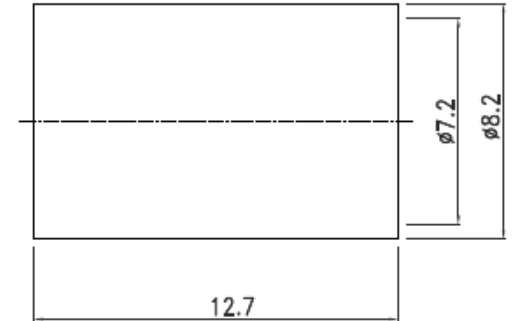
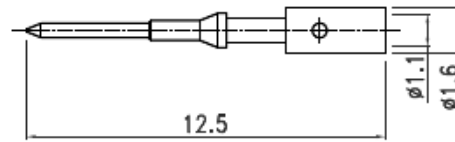
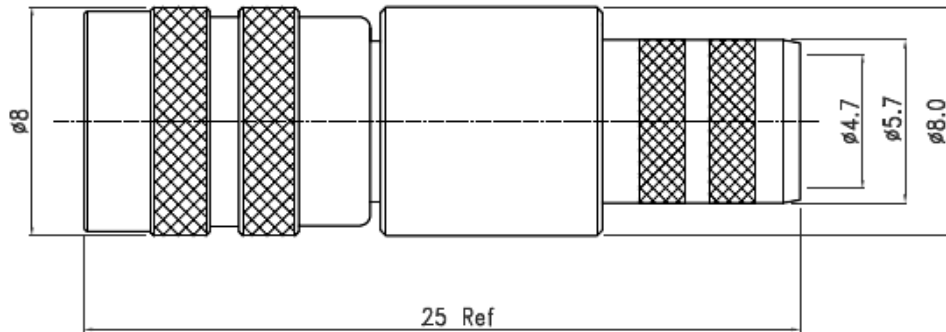
**TITLE** 1.0/2.3 Crimp Plug for Belden 1855A



**Cambridge Connectors**  
 Denny Industrial Centre, Waterbeach, Cambridge. CB5 9PB  
 Tel: (01223) 860041 Fax: (01223) 863625

		08/04/2010
1.0	Origin	08/04/2010
Iss. No.	CHANGE	Sig. Date
Originated	PF	08/04/2010
Drn.	PF	08/04/2010
Chkd.		08/04/2010

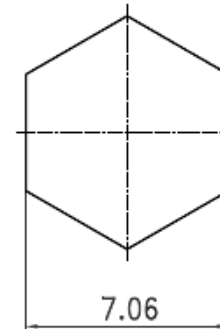
Dwg. No.  
XGT-8000-NGBA



Recommended Cable Stripping Dimensions



Recommended Crimped Dimensions for Center Pin



Recommended Crimped Dimensions for Ferrule

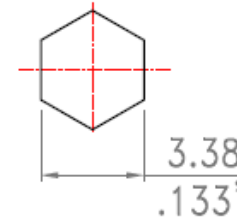
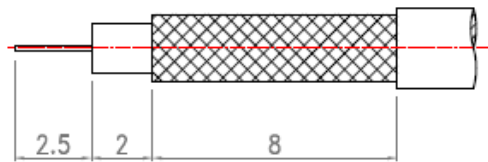
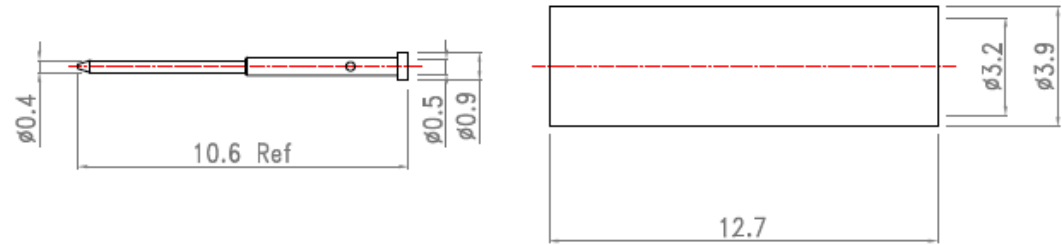
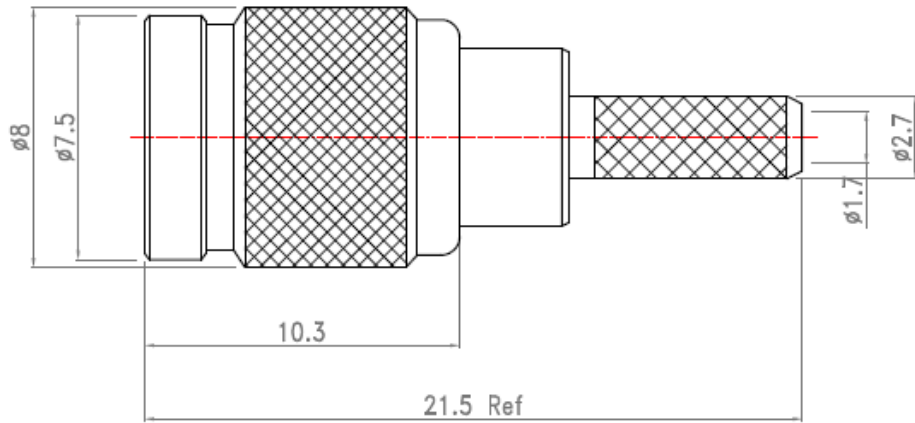
1.1	Cable strip Dim Added	26/09/2011
1.0	Origin	11/03/2010
Iss. No.	CHANGE	Sig. Date
Originated	PF	11/03/2010
Drn.	PF	11/03/2010
Chkd.		26/09/2011

**TITLE** 1.0/2.3 Plug Belden 1694A 75  $\Omega$



**Cambridge Connectors**  
 Denny Industrial Centre, Waterbeach, Cambridge. CB5 9PB  
 Tel: (01223) 860041 Fax: (01223) 863625

Dwg. No.  
 XGT-8000-NGAS



Recommended Cable Stripping Dimensions

Recommended Crimped Dimensions for Ferrule  
Tool Ref: TLG 116

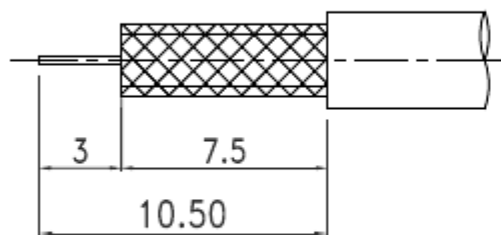
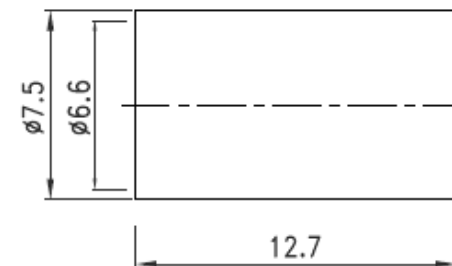
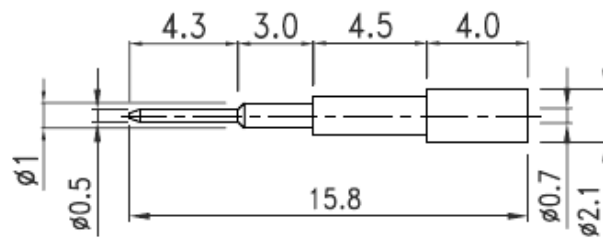
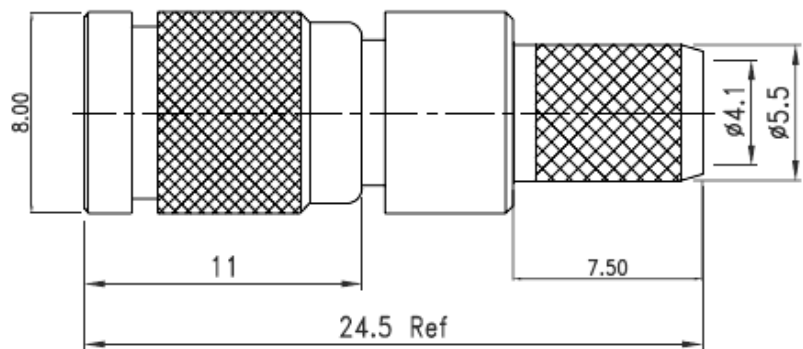
ITEM	Description	Material	Finish
4	Ferrule	Brass	Nickel
3	Pin	Brass	Gold
2	Insulator	PTFE	None
1	Body	Brass	Nickel

**TITLE** 1.0/2.3 Straight Cable Plug for RG179

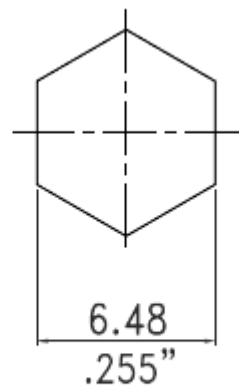


**Cambridge Connectors**  
Denny Industrial Centre, Waterbeach, Cambridge. CB5 9PB  
Tel: (01223) 860041 Fax: (01223) 863625

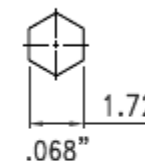
1.1	Tool Ref Added	30/03/2016
1.0	Origin	30/03/2010
Iss. No.	CHANGE	Sig. Date
Originated	PF	30/03/2010
Drn.	PF	30/03/2010
Chkd.		30/03/2010
Dwg. No.		XGT-8000-NGAF



Recommended Cable Stripping Dim's



Recommended Crimped Dimensions for Ferrule



Recommended Crimped Dimensions for Center Pin

4	Ferrule	Brass	Nickel
3	Pin	Brass	Gold
2	Insulator	PTFE	None
1	Body	Brass	Nickel
ITEM	Description	Material	Finish

**TITLE** 1.0/2.3 Crimp Plug For RG59



**Cambridge Connectors**  
 Denny Industrial Centre, Waterbeach, Cambridge. CB5 9PB  
 Tel: (01223) 860041 Fax: (01223) 863625

		04/12/2008
1.0	Origin	04/12/2008
Iss. No.	CHANGE	Sig. Date
Originated	PF	04/12/2008
Drn.	PF	04/12/2008
Chkd.		04/12/2008
Dwg. No.		XGT-8000-NGAB