

THIS PRODUCT MANUFACTURED WITH LEAD-FREE PROCESSING

DESIGNED & DIMENSIONED IN MILLIMETERS [INCHES]

DO NOT SCALE FROM THIS PRINT

SMA-J-C-XX-ST-B10

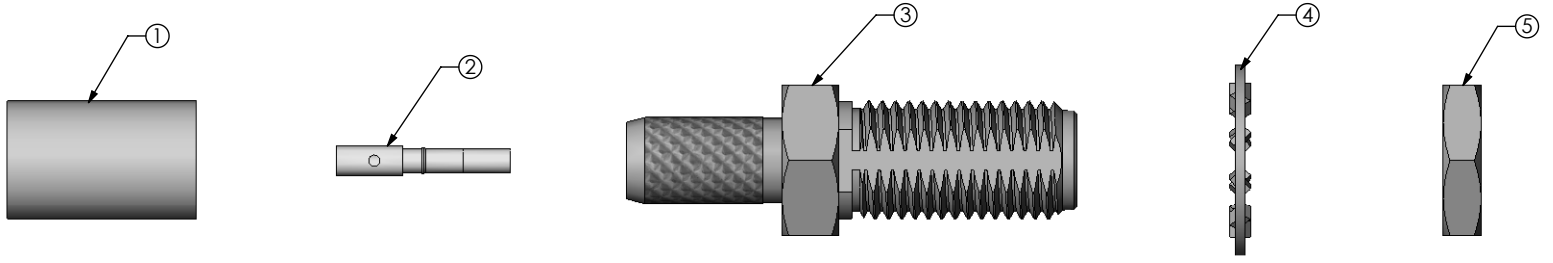
GENDER
-J: JACK

TYPE
-C: CABLE

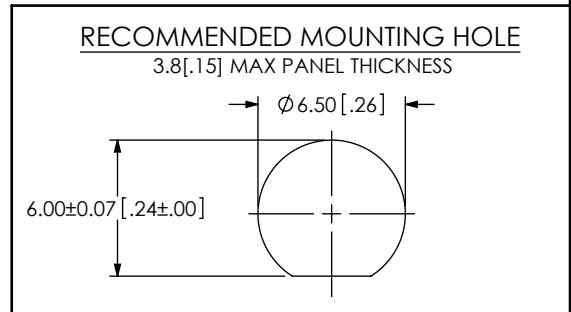
TERMINATION
-BHT0: BULKHEAD (RG58 CABLE)

ORIENTATION
-ST: STRAIGHT

PLATING SPECIFICATION
-HH: 30μ" GOLD CENTER CONTACT
3μ" MIN ON OUTER CONTACT
-GF: 10μ" GOLD ON CENTER CONTACT
3μ" GOLD ON OUTER CONTACT

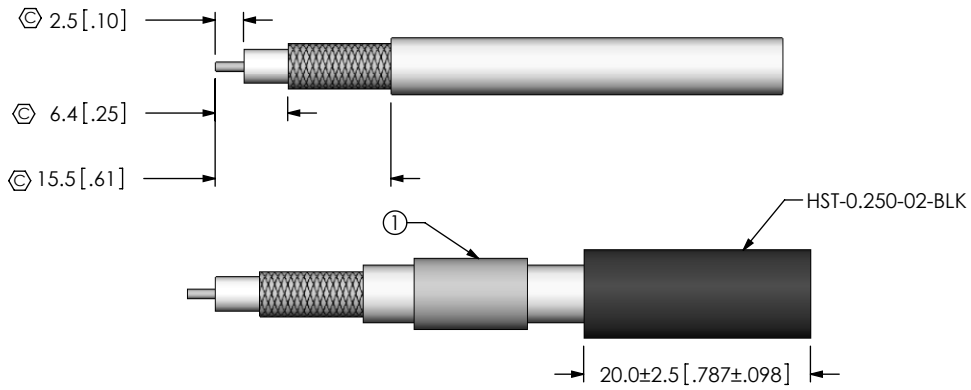


ITEM	COMPONENT	-H	-GF
1	FERRULE	TNC-FER-003-F	
2	PIN	SMA-J-C-H-ST-B10-SKT	SMA-J-C-G-ST-B10-SKT
3	SUB ASSEMBLY	SUB-SMA-J-C-F-ST-B10	
4	LOCK WASHER	SMA-LWAS-001-F	
5	HEXNUT	SMA-NUT-001-F	



- NOTES:
1. REPRESENTS A CRITICAL DIMENSION.
 2. NOTE DELETED.
 3. PRODUCT TO BE PACKAGED PER PACKAGING STANDARD CO-HD-WI-3040M.
 4. NOTE DELETED.
 5. NOTE DELETED.
 6. NOTE DELETED.

<p>UNLESS OTHERWISE SPECIFIED, DIMENSIONS ARE IN MILLIMETERS [INCHES]. TOLERANCES ARE:</p> <p>DECIMALS ANGLES</p> <p>.X: ±0.3 [.01] 5°</p> <p>.XX: ±0.13 [.005]</p> <p>.XXX: ±0.051 [.0020]</p>	<p>PROPRIETARY NOTE</p> <p>THIS DOCUMENT CONTAINS INFORMATION CONFIDENTIAL AND PROPRIETARY TO SAMTEC, INC. AND SHALL NOT BE REPRODUCED OR TRANSFERRED TO OTHER DOCUMENTS OR DISCLOSED TO OTHERS OR USED FOR ANY PURPOSE OTHER THAN THAT WHICH IT WAS OBTAINED WITHOUT THE EXPRESSED WRITTEN CONSENT OF SAMTEC, INC.</p>	<p>520 PARK EAST BLVD, NEW ALBANY, IN 47150 PHONE: 812-944-6733 FAX: 812-948-5047 e-Mail: info@SAMTEC.com code: 55322</p>
<p>BY: ALVIN W 09/07/2010</p>		<p>SHEET 1 OF 2</p>



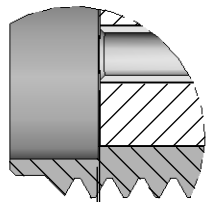
IN PROCESS 1
STRIP AND TIN INNER CONDUCTOR

IN PROCESS 2
ADD HEAT SHRINK TUBE AND FERRULE

IN PROCESS 3
FLARE SHIELD

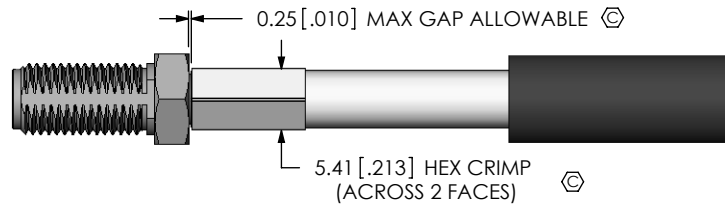
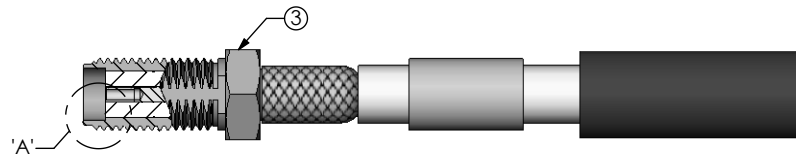
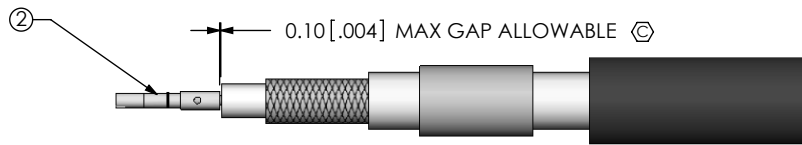
IN PROCESS 4
SOLDER SIGNAL PIN

IN PROCESS 5
ADD SUB-SMA-J-C-X-ST-B10

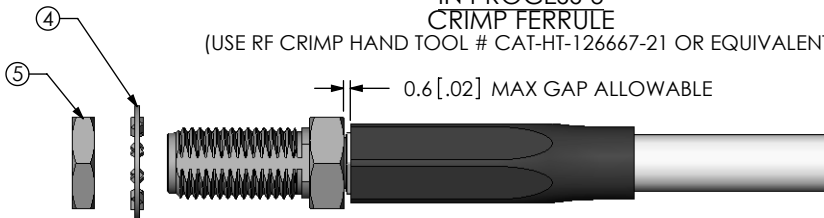


0.05 [.002] REF
(TO CONTACT
AND INSULATOR)

DETAIL 'A'
SCALE 6:1



IN PROCESS 6
CRIMP FERRULE
(USE RF CRIMP HAND TOOL # CAT-HT-126667-21 OR EQUIVALENT)



IN PROCESS 7
APPLY HEAT SHRINK TUBING

PROPRIETARY NOTE

THIS DOCUMENT CONTAINS INFORMATION CONFIDENTIAL AND PROPRIETARY TO SAMTEC, INC. AND SHALL NOT BE REPRODUCED OR TRANSFERRED TO OTHER DOCUMENTS OR DISCLOSED TO OTHERS OR USED FOR ANY PURPOSE OTHER THAN THAT WHICH IT WAS OBTAINED WITHOUT THE EXPRESSED WRITTEN CONSENT OF SAMTEC, INC.

DO NOT SCALE DRAWING

SHEET SCALE: 3:2



520 PARK EAST BLVD, NEW ALBANY, IN 47150
PHONE: 812-944-6733 FAX: 812-948-5047
e-Mail: info@SAMTEC.com code: 55322

DESCRIPTION:
SMA 50 OHM STRAIGHT JACK BULKHEAD FOR RG58

DWG. NO.
SMA-J-C-XX-ST-B10

BY: ALVIN W 09/07/2010 SHEET 2 OF 2