

Part/Keyword Search



Detailed Drawing



Printer Friendly Datasheet

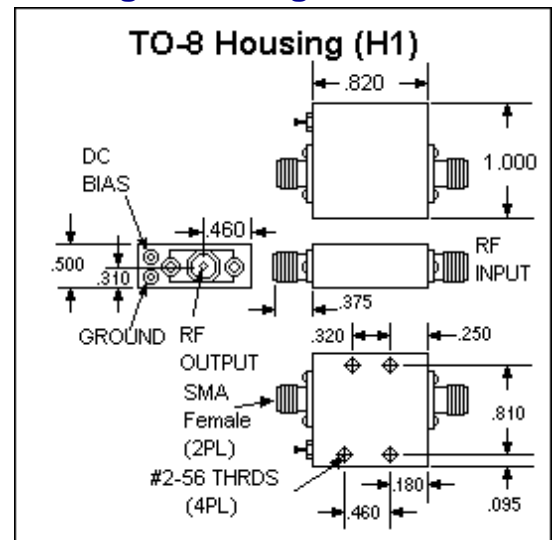
BX9302 / SX9302*

* Part number for additional environmental screening.

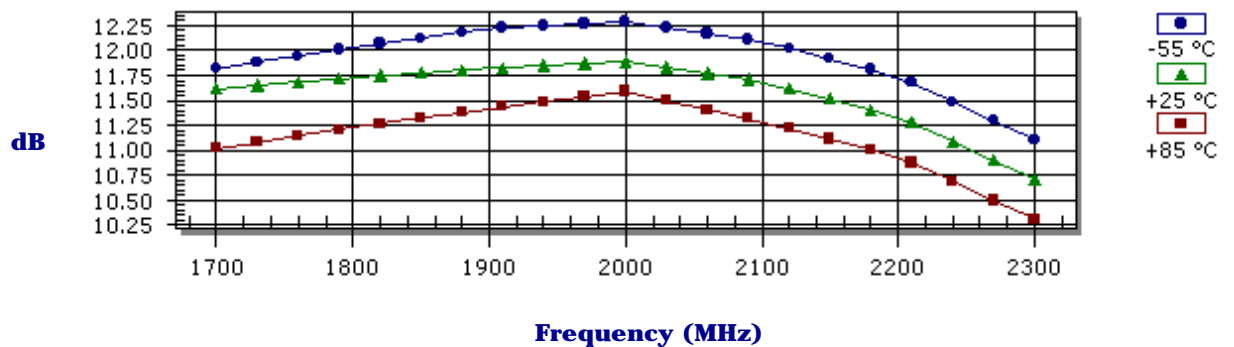
Performance Data

| | |
|---------------------------------|---|
| Frequency | 1700.0 - 2300.0 MHz |
| Gain | 10.5 dB Typical 8.5 dB Min |
| Noise Figure | 5.0 dB Typical 6.5 dB Max |
| P _{1dB} | 11.0 dBm Typical 9.0 dBm Min |
| 3 rd Order Intercept | 23.0 dBm Typical |
| 2 nd Order Intercept | 40.0 dBm Typical |
| VSWR | 1.8/2.0 Input Typ/Max 1.5/2.0 Output Typ/Max |
| Reverse Isolation | -13.0 dB Typical -12.0 dB Min |
| Power Supply | 15.0 Volts 18.0 mA |
| Operating Temperature | -55.0 - 85.0 °C |

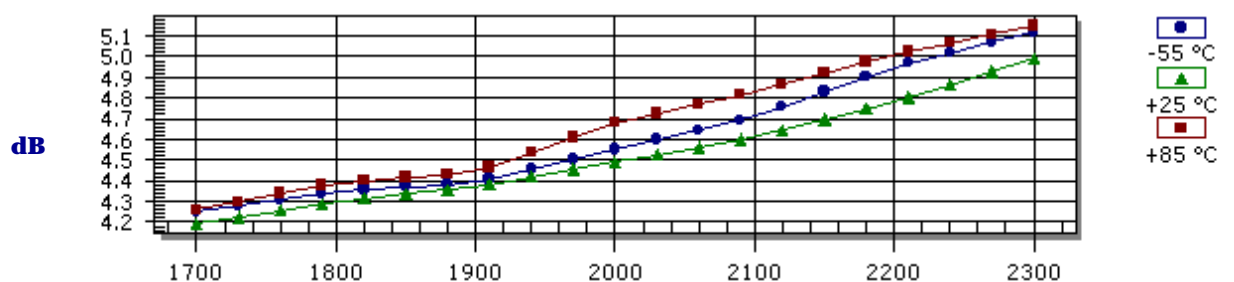
Package Drawing



Gain



Noise Figure



Products

Amplifiers

VCOs

Limiting Amplifiers

Switches

Linearizers

Limiters

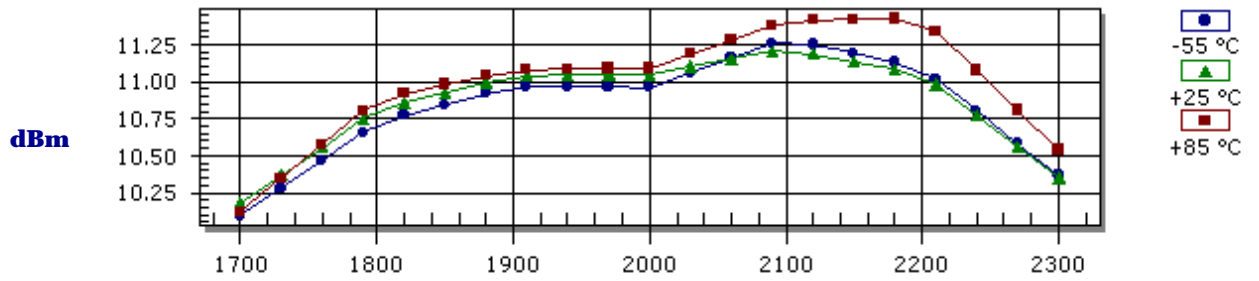
Analog Attenuators

Digital Attenuators

Detectors

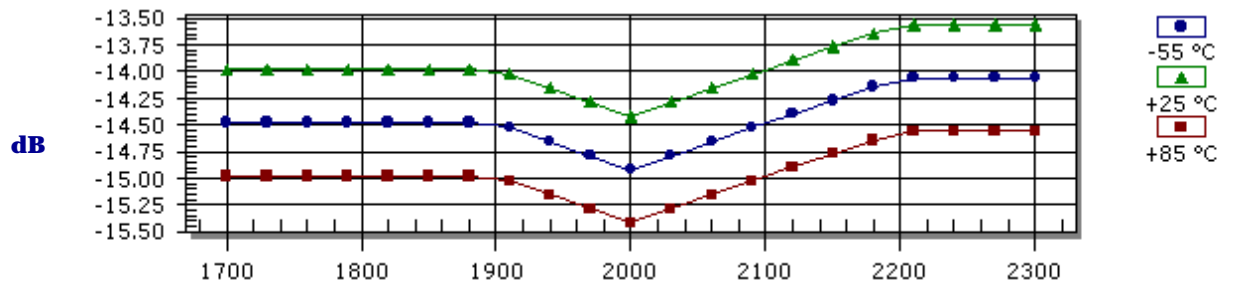
Frequency (MHz)

P_{1dB} Compression Point



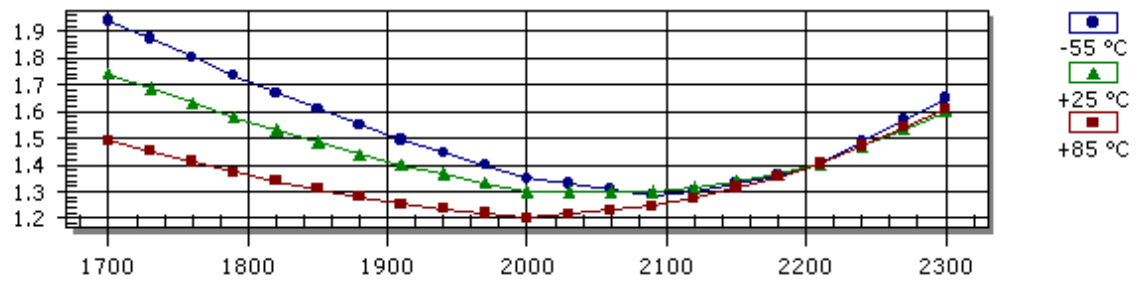
Frequency (MHz)

Reverse Isolation



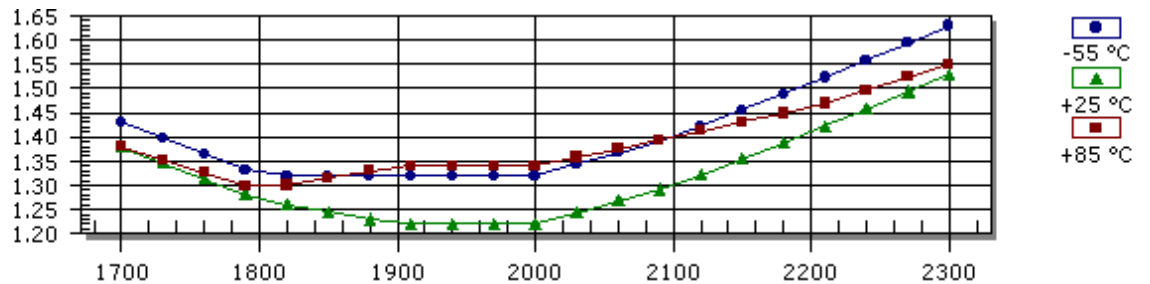
Frequency (MHz)

Input VSWR



Frequency (MHz)

Output VSWR



Frequency (MHz)

S-Parameters

| Frequency | S11 Mag | S11 Ang | S21 Mag | S21 Ang | S12 Mag | S12 Ang | S22 Mag | S22 Ang |
|-----------|---------|---------|---------|---------|---------|---------|---------|---------|
| 1700.0 | 0.270 | 33.00 | 3.810 | 37.00 | 0.200 | -19.00 | 0.160 | -11.00 |
| 1800.0 | 0.220 | 29.00 | 3.860 | 25.00 | 0.200 | -21.00 | 0.120 | -39.00 |
| 1900.0 | 0.170 | 29.00 | 3.900 | 13.00 | 0.200 | -23.00 | 0.100 | -80.00 |
| 2000.0 | 0.130 | 43.00 | 3.930 | 1.00 | 0.190 | -22.00 | 0.100 | -130.00 |
| 2100.0 | 0.130 | 67.00 | 3.840 | -13.00 | 0.200 | -21.00 | 0.130 | -167.00 |
| 2200.0 | 0.160 | 83.00 | 3.690 | -26.00 | 0.210 | -22.00 | 0.170 | 164.00 |
| 2300.0 | 0.230 | 86.00 | 3.430 | -39.00 | 0.210 | -23.00 | 0.210 | 140.00 |

Absolute Maximum Conditions

| | | | |
|------------------------------------|------------------|---|------------------|
| Maximum Operating Temperature | -55.0 - 100.0 °C | Maximum Storage Temperature | -62.0 - 125.0 °C |
| Maximum Case Temperature | 125.0 °C | Maximum Supply Voltage | 18.0 Volts |
| Continuous RF Input Power | 13.0 dBm | Short Term RF Input Power (1 minute max) | 50.0 mW |
| Maximum Peak Power (3 µsec max) | 0.5 W | | |

Amplifonix | 2707 Black Lake Place | Philadelphia, PA 19154
Tel: 215.464.4000 | FAX: 215.464.4001 | Email: info@amplifonix.com

i2 Technologies US, Inc.

HTML Pages converted to PDF Document

This document contains component information from the manufacturer's website which are not available in a revision controlled document from the manufacturer. To facilitate the addition of these parts into the Electronics Database, we are converting the HTML pages related to that part, from the manufacturer's website into Adobe PDF format. The contents of this document is based on the information provided on the manufacturer's website, therefore the information may have been changed by the manufacturer since this was created.

