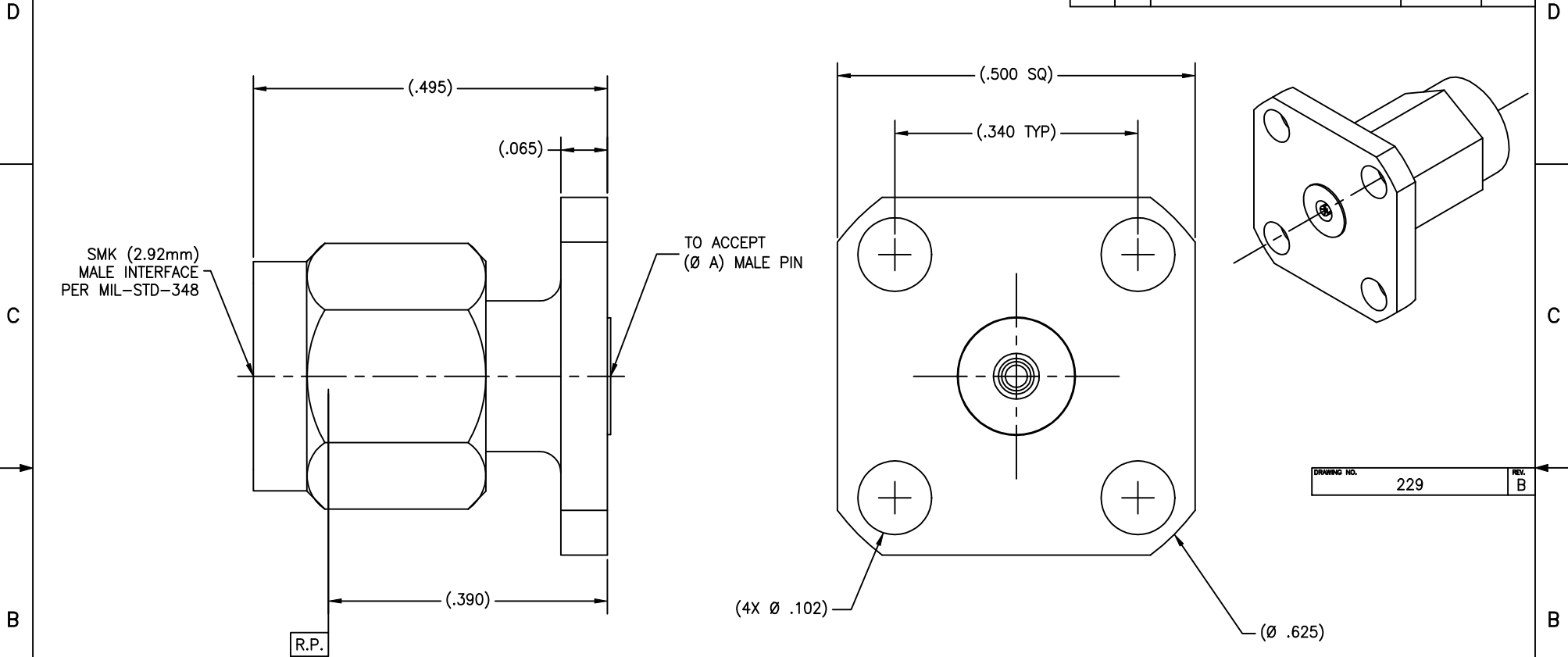


P/N	APPLICABLE NOTES	(Ø A)
CC	1,2	.0120
CCSF	1,2	.0120

REVISIONS				
ZONE	REV	DESCRIPTION	DATE	BY
-	A	ECO 12486	11/06/00	IMG
-	B	ECO 14689	07.12.02	ATV



DRAWING NO.	229	REV.	B
-------------	-----	------	---

NOTE(S):

1. MATERIAL(S):
 - 1.1 BODY, COUPLING NUT & INSERT: 303 SST PER ASTM A-582
 - 1.2 CENTER CONDUCTOR & RETAINING RING: BeCu ALLOY PER ASTM B-196
 - 1.3 BEAD: (HIGH PERFORMANCE APPLICATION)
 - 1.4 GASKET: SILICONE RUBBER PER ZZ-R-765
2. FINISH(ES):
 - 2.1 BODY, COUPLING NUT & INSERT:
 - (FOR CC) GOLD PLATE PER ASTM B-488 OVER NICKEL PLATE PER QQ-N-290.
 - (FOR CCSF) PASSIVATED PER ASTM A-967
 - 2.2 CENTER CONDUCTOR: GOLD PLATE PER ASTM B-488 OVER NICKEL PLATE PER QQ-N-290.
 - 2.3 RETAINING RING & BEAD: NONE
3. ELECTRICAL PERFORMANCE(S):
 - 3.1 FREQUENCY RANGE: DC-40 GHz
 - 3.2 R.F. INSERTION LOSS: 0.5dB MAX TO 40GHz
 - 3.3 VSWR: 1.10:1 DC TO 18GHz
1.25:1 18-40GHz

NOTICE
 THIS DRAWING EMBODIES A CONFIDENTIAL PROPRIETARY DESIGN ORIGINATED BY TENSOLITE COMPANY AND ALL DESIGN, MANUFACTURING REPRODUCTION, USE AND SALE RIGHTS REGARDING THE SAME ARE EXPRESSLY RESERVED. IT IS SUBMITTED UNDER A CONFIDENTIAL RELATIONSHIP FOR A SPECIFIED PURPOSE AND THE RECIPIENT AGREES BY ACCEPTING THIS DRAWING NOT TO SUPPLY OR DISCLOSE ANY INFORMATION REGARDING IT TO ANY UNAUTHORIZED PERSON OR TO INCORPORATE IN OTHER PROJECTS ANY SPECIAL FEATURES PECULIAR TO THIS DESIGN. ALL PATENT RIGHTS HERETO ARE EXPRESSLY RESERVED BY TENSOLITE COMPANY, LONG BEACH, CALIFORNIA 90815.

TOLERANCES AND NOTES EXCEPT AS NOTED
 DIMENSIONS ARE IN INCHES.
 LINEAR .XX ± 0.015 ANGULAR ± 1/2°
 FRACTION ± 1/32
 1. MACHINE FINISH: 63/RMS
 2. BREAK ALL SHARP EDGES .003 MAX.
 3. MACHINED FILLETS: .005 MAX.
 4. MACHINED SURFACES: SQUARE TO RESPECTIVE AXIS WITHIN .005 INCHES PER INCH.
 5. MACHINED DIAMETERS CONCENTRIC WITHIN .002 I.T.R.
 6. DIMENSIONS TO BE MET BEFORE PLATING.
 7. CHAMFER ALL THREADS 45°.
 8. THREADS PER H-28
 9. REMOVE FINISHED EDGES ON TEFLON.
 10. REMOVE ALL BURRS.

SEE NOTES		-	SEE NOTES	-
MATERIAL		SIZE	SPECIFICATION	PROCUREMENT
NEXT ASSY		Tensolite HIGH PERFORMANCE CABLES & INTERCONNECT SYSTEMS Long Beach, California 90815		
APPROVAL INITIALS	DATE	TITLE SMK (2.92mm) MALE 4 HOLE FLANGE (.500 SQ) MOUNT STRAIGHT FIELD REPLACEABLE		
DRAWN BY DKN	09.01.99	SCALE	SUB-DIRECTORY FILENAME	
CHECKED		10/1	OL	SHEET 1 OF 1
QUALITY		SIZE	CAGE CODE	DRAWING NO.
ENGINEERING ATV	07.17.02	C	30990	229
				REV. B