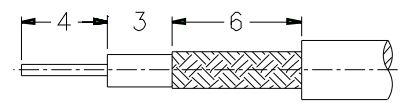


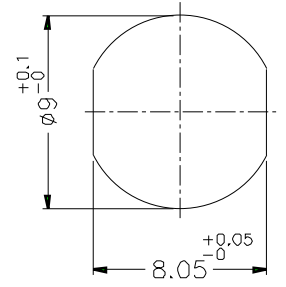
1 2 3 4 5 6 7 8

REVISIONS		
ISS	ZONE	DESCRIPTION\PER REQUEST\DATE

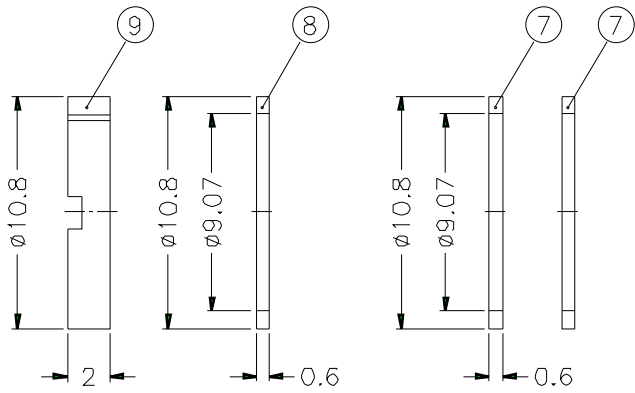
CABLES: - FILOTEX NO ETUDE 276097
 - TBR/CAB-SP.01
 - ST 212 (SIRTI TCE2HH2)



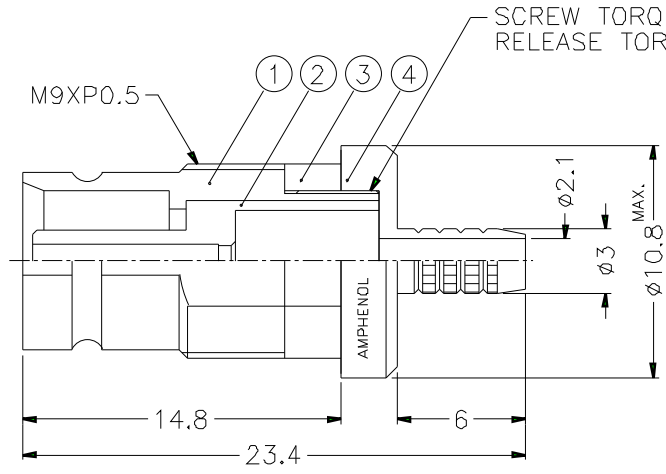
RECOMMENDED CABLE STRIPPING DIM'S



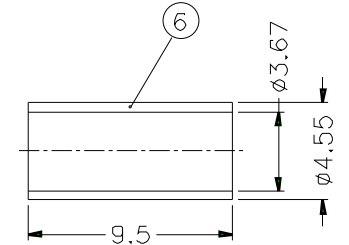
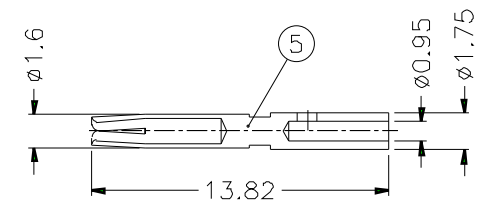
RECOMMENDED MOUNTING HOLE



PANEL THICKNESS:
 1. 1.2mm(GROUNDED OR ISOLATED)
 2. 3mm(ONLY GROUNDED, WITHOUT WASHERS ⑦ AND ⑧)



SCREW TORQUE 0.8 TO 1.2 N-m
 RELEASE TORQUE 0.8 N-m MIN.



- FERRULE CRIMPING TOOLS P/N
 227-944 (M22520/5.01)
 227-1221-37 (M22520/5.37) HEX: 3.84
- INNER CONTACT CRIMPING TOOL P/N
 413 SP 00 ADJUST TO 5
- CONNECTOR ACCORDING TO NF C 93-570, DIN 47-295, CEI 169-13
- PACKAGING IN BAG WITH COMMERCIAL PART NUMBER AND DATE CODE

9	NUT	BRASS	NICKEL	1	
8	WASHER	BRASS	NICKEL	1	
7	ISOLATING WASHER	EPOXY GLASS -FR4 TYPE	NATURAL	2	
6	FERRULE	COPPER	NICKEL	1	
5	CONTACT PIN	BEJU	GOLD	1	
4	BARREL	BRASS	NICKEL	1	
3	RING	PSU,20% G.F.	GREEN	1	
2	INSULATOR	TEFLON	NATURAL	1	
1	BODY	BRASS	GOLD	1	
NO.	DESCRIPTION	MATERIAL	FINISH	Q'TY	DRAWING NO.

DIMENSIONS ARE IN MILLIMETERS				PART NO. 156 931 17	
APPROVED	DATE	10-11-01'			
CHECKED	DATE	10-11-01'			
DRAWN	DATE	10-11-01'			
FILE NO.					

Amphenol

TITLE
1.6/5.6 75Ω BULKHEAD MOUNT JACK

DRAWING NO.

ITEM NO.

1 2 3 4 5 6 7 8

F

F

E

E

D

D

C

C

B

B

A

A