

AN6781

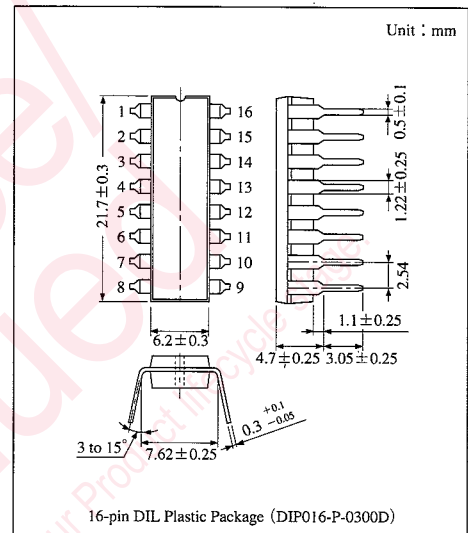
Residual Time Indication Timer with LED Drivers

Overview

The AN6781 is an integrated circuit designed for timer. The lapse of time for setting time interval can be displayed with LED. It consists of an oscillator, divider, output circuit, LED driver and power circuit. Time can freely be set with external resistor (R_T) and capacitor (C_T) of oscillator.

Features

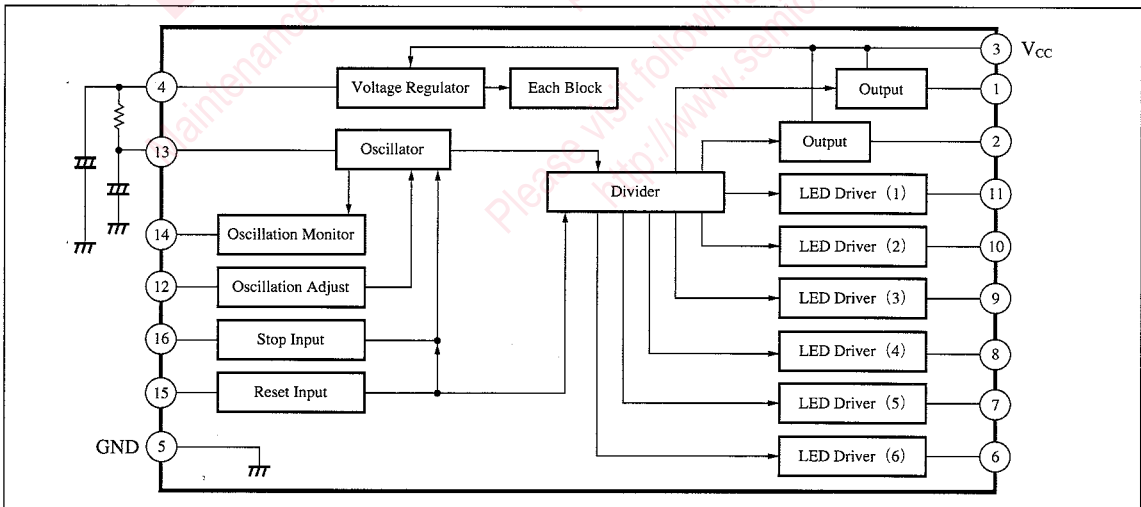
- 5 LED drivers indicate residual time at identical.
- One LED driver for time-up indicator
- High LED drive current : 30mA
- Normally ON and OFF outputs are available
- TTL compatible outputs
- Power on reset
- Timer intervals from one second to one day.



Pin Descriptions

Pin No.	Pin name	Pin No.	Pin name
1	Output (1)	9	LED driver (3)
2	Output (2)	10	LED driver (2)
3	V _{cc}	11	LED driver (1)
4	Voltage stabilizer	12	Osc. adjustment
5	GND	13	CR connection
6	LED driver (6), time-up	14	Osc. monitor
7	LED driver (5)	15	Reset input
8	LED driver (4)	16	Stop input

Block Diagram



Others

■ Absolute Maximum Ratings (Ta=25°C)

Parameter	Symbol	Rating		Unit
Supply voltage	V _{CC}	13		V
Circuit voltage	V ₄₋₅	0	4	V
	V ₁₂₋₅	0	4	V
	V ₁₃₋₅	0	4	V
Circuit current	I _{1, I2}	-10	+10	mA
	I _{6, 7, 8, 9, 10, 11}	0	+30	mA
Power dissipation	P _D	450		mW
Operating ambient temperature	T _{opr}	-20 to +75		°C
Storage temperature	T _{stg}	-55 to +125		°C

■ Electrical Characteristics (Ta=25°C)

Parameter	Symbol	Condition	min	typ	max	Unit
Supply voltage	V _{CC}		4.5	—	12	V
Oscillator charging current	I _{CC}	V _{CC} =12V	—	—	30	mA
High level input voltage	V _{IH}		2	—	—	V
Low level input voltage	V _{IL}		—	—	0.8	V
High level output voltage	V _{OH}	V _{CC} =5V, I _{OH} =-10mA	2	—	—	V
Low level output voltage	V _{OL}	V _{CC} =12V, I _{OL} =10mA	—	—	0.4	V
LED ON voltage	V _{LED}	I _{LED} =30mA	—	—	0.4	V

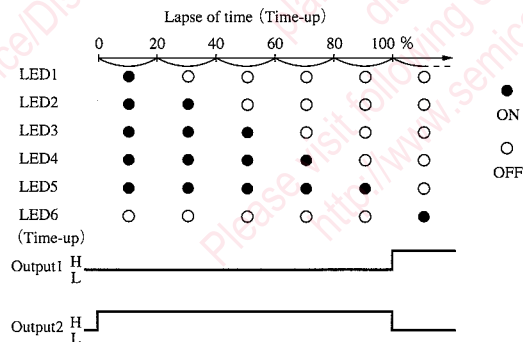
■ Truth Value Table (Positive Logic)

Mode	Reset	Stop	Oscillator	Divider	Output1	Output2
1	L	*	Stop	Clear	L	H
2	H	H	Oscillation	Count operation	Count operation	Count operation
3	H	L	Stop	Previous state is retained	Previous state is retained	Previous state is retained

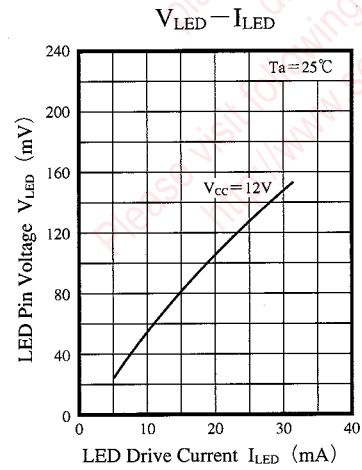
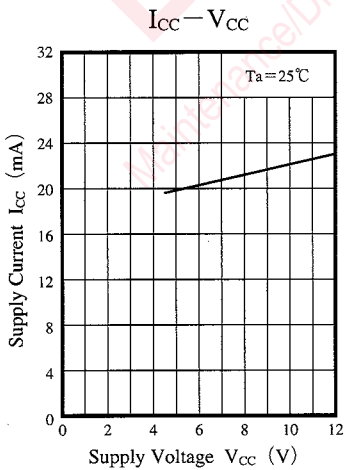
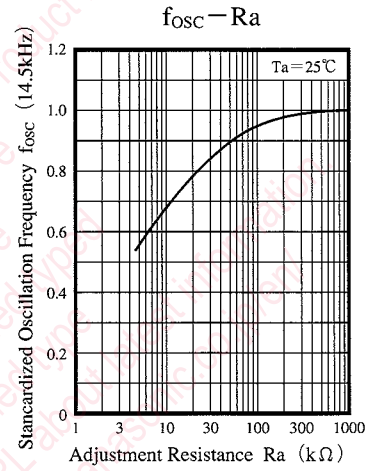
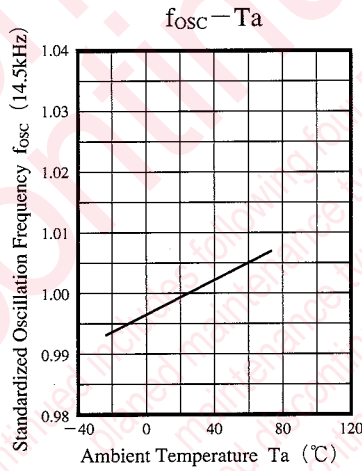
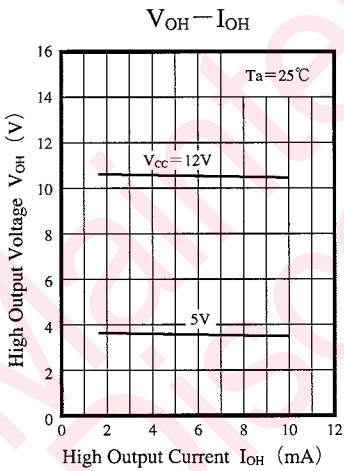
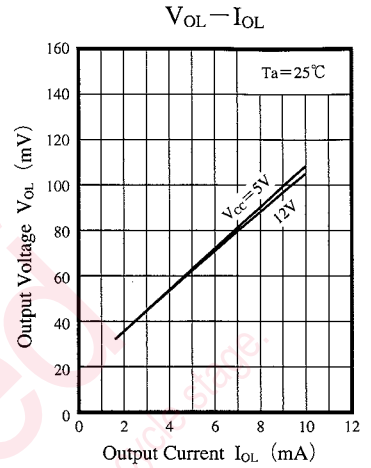
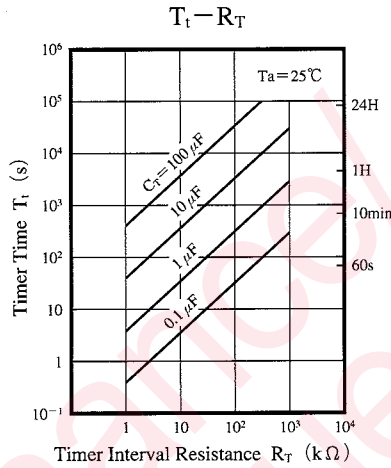
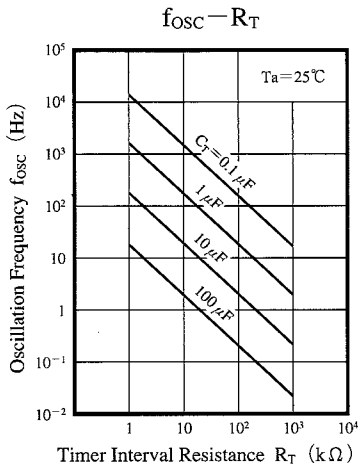
Note1) Either L or H is possible at *.

Note2) At power ON, the state in Model is moved to the state in mode2 or 3 according to the input state of reset/stop.

■ Timer Operation



■ Characteristics Curve

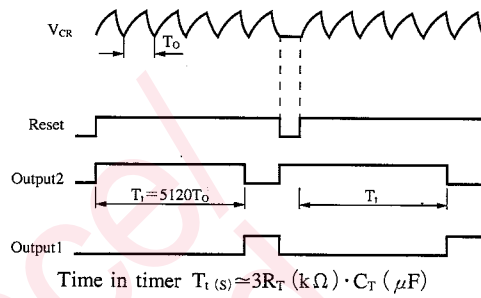
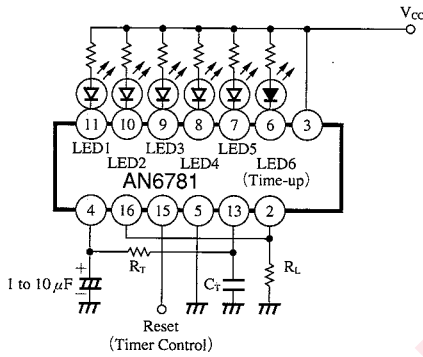


Use the oscillation resistor (R_T) of $1k\Omega$ to $1M\Omega$ and the capacitor (C_T) such as a ceramic capacitor or Mylar capacitor which is small serial resistance at the capacitance value of $0.1\mu F$ or more.

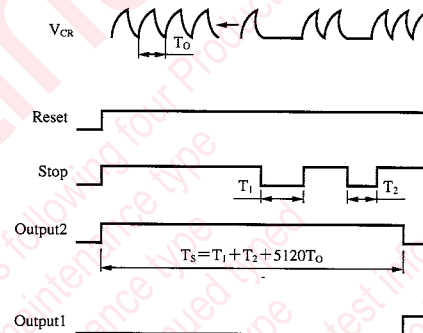
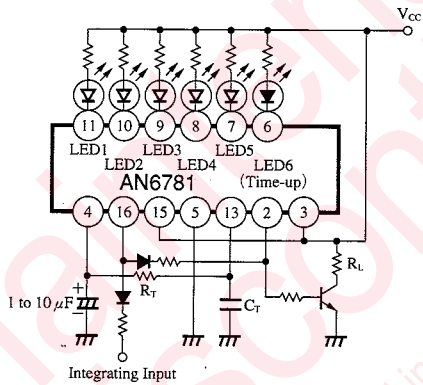
Others

Application Circuit

(1) Timer Basic Application



(2) Intergrating Timer

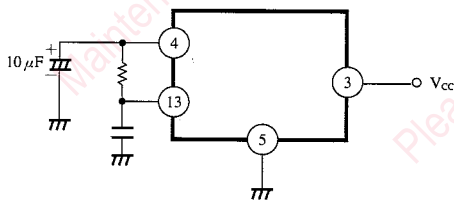


Integrated time in timer $T_s (s) = 3R_T (k\Omega) \cdot C_T (\mu F) + (T_1 + T_2 + \dots)$

Precaution on Use

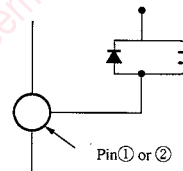
Attention should be given to the following items for preventing breakage during operation as well as improving reliability.

- 1) To protect and stabilize the operation of IC from external noise, insert the capacitance (1 to 10 μF) into Pin④



- 2) During normal operation, when power supply is turned ON after power-OFF state for an extremely short time, the auto reset may not be applied due to residual electric potential of external capacitance.
- 3) Countermeasure against noise. Especially, attention should be paid to external noise for long-hour setting.

- 4) When the plunger, relay, etc. are connected to the output circuit, connect the diode to both ends of coil to protect IC from reverse electromotive force.



- 5) When using the oscillation frequency fine-adjusting pin Pin⑫, insert the adjusting resistor Ra of 5kΩ or more between Pins④ and ⑫ of constant voltage.

Request for your special attention and precautions in using the technical information and semiconductors described in this book

- (1) If any of the products or technical information described in this book is to be exported or provided to non-residents, the laws and regulations of the exporting country, especially, those with regard to security export control, must be observed.
- (2) The technical information described in this book is intended only to show the main characteristics and application circuit examples of the products. No license is granted in and to any intellectual property right or other right owned by Panasonic Corporation or any other company. Therefore, no responsibility is assumed by our company as to the infringement upon any such right owned by any other company which may arise as a result of the use of technical information described in this book.
- (3) The products described in this book are intended to be used for standard applications or general electronic equipment (such as office equipment, communications equipment, measuring instruments and household appliances).
Consult our sales staff in advance for information on the following applications:
 - Special applications (such as for airplanes, aerospace, automobiles, traffic control equipment, combustion equipment, life support systems and safety devices) in which exceptional quality and reliability are required, or if the failure or malfunction of the products may directly jeopardize life or harm the human body.
 - Any applications other than the standard applications intended.
- (4) The products and product specifications described in this book are subject to change without notice for modification and/or improvement. At the final stage of your design, purchasing, or use of the products, therefore, ask for the most up-to-date Product Standards in advance to make sure that the latest specifications satisfy your requirements.
- (5) When designing your equipment, comply with the range of absolute maximum rating and the guaranteed operating conditions (operating power supply voltage and operating environment etc.). Especially, please be careful not to exceed the range of absolute maximum rating on the transient state, such as power-on, power-off and mode-switching. Otherwise, we will not be liable for any defect which may arise later in your equipment.
 - Even when the products are used within the guaranteed values, take into the consideration of incidence of break down and failure mode, possible to occur to semiconductor products. Measures on the systems such as redundant design, arresting the spread of fire or preventing glitch are recommended in order to prevent physical injury, fire, social damages, for example, by using the products.
- (6) Comply with the instructions for use in order to prevent breakdown and characteristics change due to external factors (ESD, EOS, thermal stress and mechanical stress) at the time of handling, mounting or at customer's process. When using products for which damp-proof packing is required, satisfy the conditions, such as shelf life and the elapsed time since first opening the packages.
- (7) This book may be not reprinted or reproduced whether wholly or partially, without the prior written permission of our company.