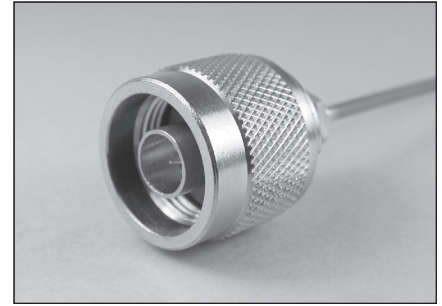
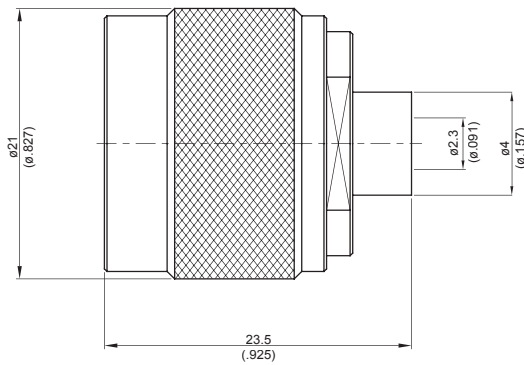
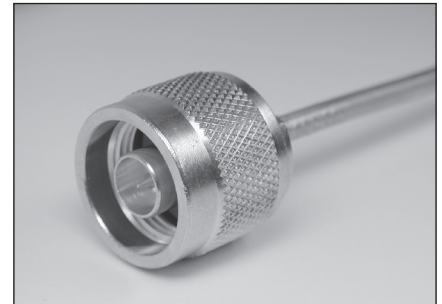
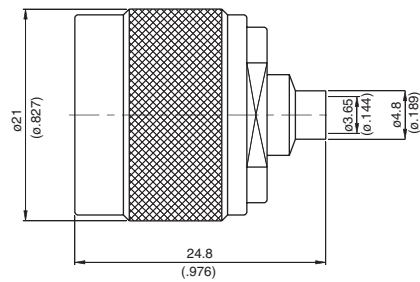


► **N PLUG SOLDER**



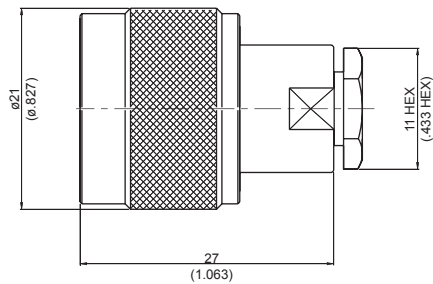
Part Number	Weight	Material	Suitable Cables	Remarks
N3300-0085	31.74g	A11	Semi-rigid .085	
N3300A-0085		A11	Semi-rigid .085	A=Shell 20mm HEX

► **N PLUG SOLDER**



Part Number	Weight	Material	Suitable Cables	Remarks
N3300-0141	30.58g	A11	Semi-rigid .141	
N3300A-0141	31.72g	A11	Semi-rigid .141	A=Nut 20mm HEX

► **N PLUG SOLDER CLAMP**



Part Number	Weight	Material	Suitable Cables
N3300-0250	36.33g	A11	Semi-rigid .250