

Triple Air-Core Gauge Driver with Serial Input Bus

Description

The CS-4102 converts digital data from a microprocessor to complementary DC outputs and drives air-core meter movements for vehicle instrument panels. It is optimized for one 360° gauge and two 112° gauges. The digital data controls the voltage applied to the quadrature coils of the meters with a 0.35° resolution for the major (360°) gauge and 0.44° resolution for the minor (112°) gauges. The accuracy is ±0.5° for all outputs. The interface from the microcontroller is by a SPI compatible serial connection using up to a 2MHz shift clock rate.

The digital code is shifted into the appropriate DAC and multiplexer.

These two blocks provide a tangential conversion function to change the digital data into the appropriate DC coil voltage. The major gauge driver can position a pointer anywhere within a 360° circle while the minor gauge drivers are limited to an arc of 112.2°.

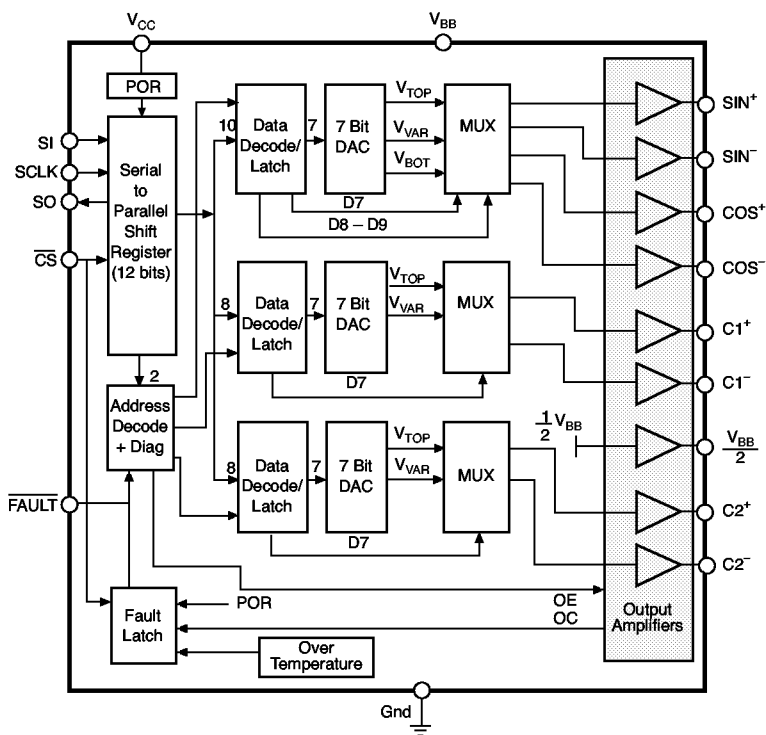
The output buffers are capable of supplying up to 80mA per coil and are protected against output short circuit conditions. A thermal protection circuit limits the junction temperature to approximately 160°C.

A fault output lead goes low when any of the outputs are shorted or the device is in a thermal shutdown state.

Features

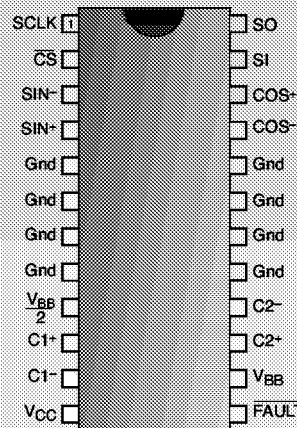
- Serial Input Bus
- 2 MHz Operating Frequency
- Independently Addressable Gauges
- Tangential Drive Algorithm
- 80mA Drive Circuits
- 0.5° Accuracy
- Power-On-Reset
- Protection Features
 - Output Short Circuit
 - Overtemperature

Block Diagram



Package Option

24 Lead SOIC
(internally fused leads)



Cherry Semiconductor

Cherry Semiconductor Corporation
2000 South County Trail
East Greenwich, Rhode Island 02818-1530
Tel: (401)885-3600 Fax (401)885-5786
email: info@cherry-semi.com

Absolute Maximum Ratings

Supply Voltage		
V_{BB}	-1.0V to 15.0V
V_{CC}	-1.0V to 6.0V
Digital Inputs	-1.0V to 6.0V
Steady State Output Current	± 100 mA
Forced Injection Current (Inputs and Supply)	± 10 mA
Operating Junction Temperature (T_J)	150°C
Storage Temperature Range (T_{STG})	-65°C to 150°C
Θ_{JA} (Thermal Resistance Junction to Ambient) 24L SOIC (internally fused leads)	55°C/W
Θ_{JC} (Thermal Resistance Junction to Case) 24L SOIC (internally fused leads)	9°C/W

Electrical Characteristics: $-40^\circ\text{C} \leq T_A \leq 105^\circ\text{C}$; $7.5\text{V} \leq V_{BB} \leq 14\text{V}$; $4.5\text{V} \leq V_{CC} \leq 5.5\text{V}$ (unless otherwise specified)

PARAMETER	TEST CONDITIONS	MIN	TYP	MAX	UNIT
Supply Voltages and Currents					
Analog Supply Current	$V_{BB} = 14\text{V}$, no coil loads $R_{COS}, R_{SIN} = R_{L(min)}$ Major @ 45° (code = 080 ₁₆) Both Minors @ 0° (codes = 00 ₁₆) Major @ 0° (code = 000 ₁₆) Both Minors @ 56° (codes = 80 ₁₆)			25	mA
				340	mA
				100	mA
Logic Supply Current	$V_{CC} = 5.5\text{V}$ SCLK = 2MHz SCLK = 0MHz, $V_{BB} = 0\text{V}$		290	1 400	mA μA
Digital Inputs and Outputs					
Output High Voltage	$SO = I_{OUT(High)} = 0.8\text{mA}$	$V_{CC} - 0.8$			V
Output Low Voltage	$SO = I_{OUT(Low)} = 1.5\text{mA}$ FAULT, $I_{OUT(Low)} = 2.8\text{mA}$			0.4 0.8	V
Output High Current	FAULT, $V_{CC} = 5.0\text{V}$ $V_{OUT(High)} = V_{CC}$			25	μA
Input High Voltage	\overline{CS} , SCLK, SI	$0.7 \times V_{CC}$			V
Input Low Voltage	\overline{CS} , SCLK, SI			$0.3 \times V_{CC}$	V
Input High Current	\overline{CS} , SCLK, SI $V_{IN} = 0.7 \times V_{CC}$			1	μA
Input Low Current	\overline{CS} , SCLK, SI $V_{IN} = 0.3 \times V_{CC}$			1	μA
Analog Outputs					
Output Function Accuracy				± 0.5	deg
Output Shutdown Current, Source and Sink	$V_{BB} = \text{Max}$ $V_{BB} = \text{Min}$	80 43		160 160	mA mA
Major Coil Drive Output Voltage			$0.748 \times V_{BB}$		V
Minor Coil Drive Output Voltage			$0.744 \times V_{BB}$		V
$I_{DR(V_{BB}/2)} = \pm 50\text{mA}$		$(0.5 \times V_{BB}) - 0.1$		$(0.5 \times V_{BB}) + 0.1$	V
Minimum Load Resistance	$T_A = 105^\circ\text{C}$ $T_A = 25^\circ\text{C}$ $T_A = -40^\circ\text{C}$	229 171 138			Ω Ω Ω
SCLK Frequency				2.0	MHz
SCLK High Time		175			ns
SCLK Low Time		175			ns

Electrical Characteristics: $-40^{\circ}\text{C} \leq T_A \leq 105^{\circ}\text{C}$; $7.5\text{V} \leq V_{\text{BB}} \leq 14\text{V}$; $4.5\text{V} \leq V_{\text{CC}} \leq 5.5\text{V}$ (unless otherwise specified)

PARAMETER	TEST CONDITIONS	MIN	TYP	MAX	UNIT
■ Analog Outputs: continued					
SO Rise Time	0.75V to $V_{\text{CC}} - 1.2\text{V}$; $C_L = 90\text{pF}$			75	ns
SO Fall Time	$V_{\text{CC}} - 1.2\text{V}$ to 0.75V ; $C_L = 90\text{pF}$			75	ns
SO Delay Time	$C_L = 90\text{pF}$			150	ns
SI Setup Time		75			ns
SI Hold Time		75			ns
$\overline{\text{CS}}$ Setup Time		0			ns
$\overline{\text{CS}}$ Hold Time		75			ns

Package Lead Description

PACKAGE LEAD #	LEAD SYMBOL	FUNCTION
24 Lead SOIC (internally fused leads)		
1	SCLK	Serial clock for shifting in/out of data. Rising edge shifts data on SI into the shift register and the falling edge changes the data on SO.
2	$\overline{\text{CS}}$	When High, allows data at SI to be shifted into the internal shift register with the rising edge of SCLK. The falling edge transfers the shift register contents into the DAC and multiplexer to update the output buffers. The falling edge also re-enables the output drivers if they have been disabled by a fault.
3	SIN ⁻	Negative output for SINE coil.
4	SIN ⁺	Positive output for SINE coil.
5, 6, 7, 8, 17, 18, 19, 20	Gnd	Ground for V_{BB} and V_{CC} supplies. In the power SOIC package they aid in removing internally generated heat from the package and as such should be soldered to as large a PCB area as possible.
9	$\frac{V_{\text{BB}}}{2}$	Set to $\frac{1}{2}V_{\text{BB}}$ for biasing the two externally driven minor coils.
10	C1 ⁺	Positive output for the #1 minor coil.
11	C1 ⁻	Negative output for the #1 minor coil.
12	V_{CC}	5V logic supply. The internal registers and latches are reset by a POR generated by the rising edge of the voltage on this lead.
13	FAULT	Reflects the state of the output buffers. A logic low on this lead indicates that an output is shorted or the device is in thermal shutdown.
14	V_{BB}	Analog supply. Nominally 12.0V.
15	C2 ⁺	Positive output for the #2 minor coil.
16	C2 ⁻	Negative output for the #2 minor coil.
21	COS ⁻	Negative output for COSINE coil.
22	COS ⁺	Positive output for COSINE coil.
23	SI	Serial data input. Data present at the rising edge of the clock signal is shifted into the internal shift register.
24	SO	Serial data output. Existing 12 bit data is shifted out when new data is shifted in. Allows cascading of multiple devices on common serial port.

Theory of Operation

The CS-4102 is for interfacing between a microcontroller or microprocessor and air-core meters commonly used in automotive vehicles for speedometers, tachometers and auxiliary gauges. These meters are built using 2 coils placed at 90° orientation to each other. A magnetized disc floats in the middle of the coils and responds to the magnetic field generated by each coil. The disc has a shaft attached to it that protrudes out of the assembly. A pointer indicator is attached to this shaft and in conjunction with a separate printed scale displays the vehicle's speed, engine's speed or other information such as fuel quantity or battery voltage.

The disc (and pointer) respond to the vector sum of the voltages applied to the coils. Ideally, this relationship follows a sine/cosine equation. Since this is a transcendental and non-linear function, devices of this type use an approximation for this relationship. The CS-4102 uses a tangential algorithm as shown in Figure 1 for the major (360°) gauge. Only one output varies in any 45° range.

Note: The actual slopes are segmented but are shown here as straight lines for simplicity.

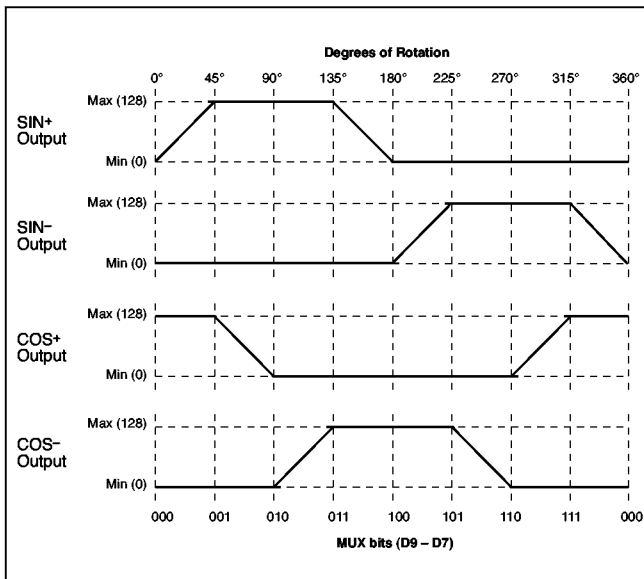


Figure 1. Major gauge outputs.

Quadrant I

$$\theta = \tan^{-1} \left[\frac{V_{SIN+} - V_{SIN-}}{V_{COS+} - V_{COS-}} \right]$$

For $\theta = 0.176^\circ$ to 44.824° :

$$V_{SIN} = \tan \theta \times 0.748 \times V_{BB}$$

$$V_{COS} = 0.748 \times V_{BB}$$

For $\theta = 45.176^\circ$ – 89.824° :

$$V_{SIN} = 0.748 \times V_{BB}$$

$$V_{COS} = \tan(90^\circ - \theta) \times 0.748 \times V_{BB}$$

Quadrant II

$$\theta = 180^\circ - \tan^{-1} \left[\frac{V_{SIN+} - V_{SIN-}}{V_{COS+} - V_{COS-}} \right]$$

For $\theta = 90.176^\circ$ to 134.824° :

$$V_{SIN} = 0.748 \times V_{BB}$$

$$V_{COS} = -\tan(\theta - 90^\circ) \times 0.748 \times V_{BB}$$

For $\theta = 135.176^\circ$ to 179.824° :

$$V_{SIN} = \tan(180^\circ - \theta) \times 0.748 \times V_{BB}$$

$$V_{COS} = -0.748 \times V_{BB}$$

Quadrant III

$$\theta = 180^\circ + \tan^{-1} \left[\frac{V_{SIN+} - V_{SIN-}}{V_{COS+} - V_{COS-}} \right]$$

For $\theta = 180.176^\circ$ to 224.824° :

$$V_{SIN} = -\tan(\theta - 180^\circ) \times 0.748 \times V_{BB}$$

$$V_{COS} = -0.748 \times V_{BB}$$

For $\theta = 225.176^\circ$ – 269.824° :

$$V_{SIN} = -0.748 \times V_{BB}$$

$$V_{COS} = -\tan(270^\circ - \theta) \times 0.748 \times V_{BB}$$

Quadrant IV

$$\theta = 360^\circ - \tan^{-1} \left[\frac{V_{SIN+} - V_{SIN-}}{V_{COS+} - V_{COS-}} \right]$$

For $\theta = 270.176^\circ$ to 314.824° :

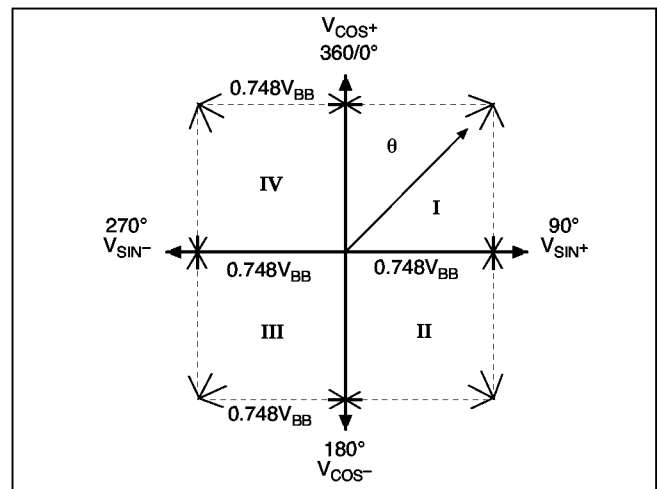
$$V_{SIN} = -0.748 \times V_{BB}$$

$$V_{COS} = \tan(\theta - 270^\circ) \times 0.748 \times V_{BB}$$

For $\theta = 315.176^\circ$ – 359.824° :

$$V_{SIN} = -\tan(360^\circ - \theta) \times 0.748 \times V_{BB}$$

$$V_{COS} = 0.748 \times V_{BB}$$



Graph 1. Major gauge response.

The minor gauge coil outputs differ in that only one of the coils in each movement is driven by the IC. The other is driven directly by the analog supply voltage, specifically one-half of this voltage. The common output assures that this is true. By varying the voltage across the other coil to a greater voltage, the pointer can be deflected more than 45° to each side of the externally driven coil. This relationship is shown in Figure 2.

Note: There are actually 8 segments, but only 3 are shown here for simplicity.

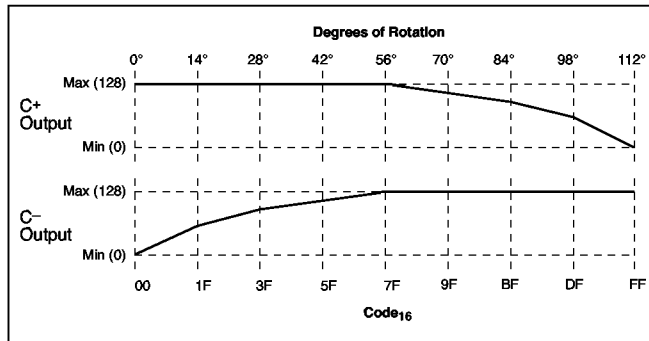
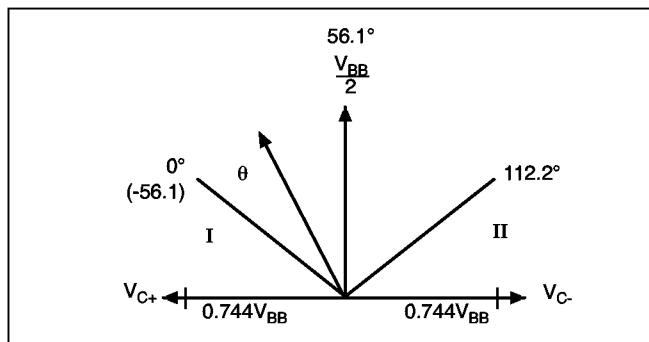


Figure 2. Minor gauge outputs.

Quadrant I, II

$$\theta = 56.1^\circ - \tan^{-1} \left[\frac{V_{C+} - V_{C-}}{V_{BB} - V \left(\frac{V_{BB}}{2} \right)} \right]$$

$$V_{COIL} = V \left(\frac{V_{BB}}{2} \right) \times \tan (56.1^\circ - \theta)$$



Graph 2. Minor gauge response.

To drive a gauge's pointer to a particular angle, the microcontroller sends a 12 bit digital word to the CS-4102. These 12 bits are divided as shown in Figure 3. However, from a software programmer's viewpoint, a 360° circle is divided into 1024 equal parts of .35° each and a 112.2° arc is divided into 256 parts of .44° each. Table 1 shows the data associated with the 45° divisions of the 360° driver. Table 2 shows the data for the center and end points of the 112.2° drivers. Setting the address to "11" disables all outputs.

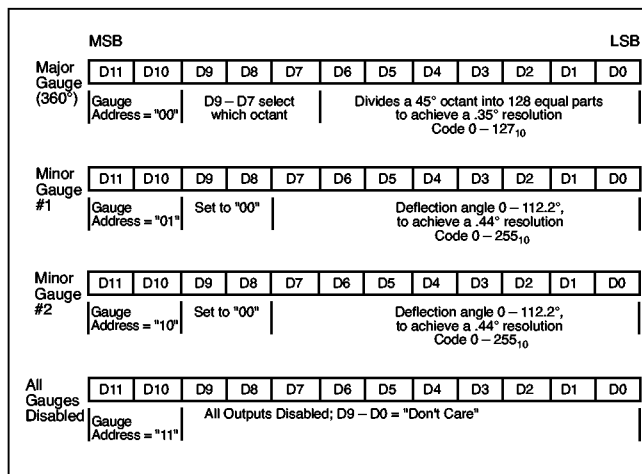


Figure 3. Definition of serial word.

Input Code (Decimal)	Ideal Degrees	Nominal Degrees	V _{SIN} (V)	V _{COS} (V)
0	0	0.176	0.032	10.472
128	45	45.176	10.472	10.412
256	90	90.176	10.472	-0.032
384	135	135.176	10.412	-10.472
512	180	180.176	-0.032	-10.472
640	225	225.176	-10.472	-10.412
768	270	270.176	-10.472	0.032
1032	359.65	359.826	-0.032	10.472

Table 1. Nominal output for major gauge (V_{BB} = 14V).

Input Code (Decimal)	Scale Degrees	Degrees from Center	V _{COIL}
0	0	-56.10	10.417
127	55.88	-0.22	0.027
128	56.32	0.22	-0.027
255	112.20	56.10	-10.417

Table 2. Nominal output for minor gauges (V_{BB} = 14V).

The 12 bits are shifted into the device's shift register MSB first using a SPI compatible scheme. This method is shown in Figures 3 and 4. The first 2 bits select the output driver for which the data is intended. The CS must be high and remain high for SCLK to be enabled. Data on SI is shifted in on the rising edge of the synchronous clock signal. Data in the shift register is shifted to SO on the falling edge of SCLK. This arrangement allows the cascading of devices. SO is always enabled. Data shifts through without affecting the outputs until CS is brought low. At this time, the internal DAC is updated and the outputs change accordingly.

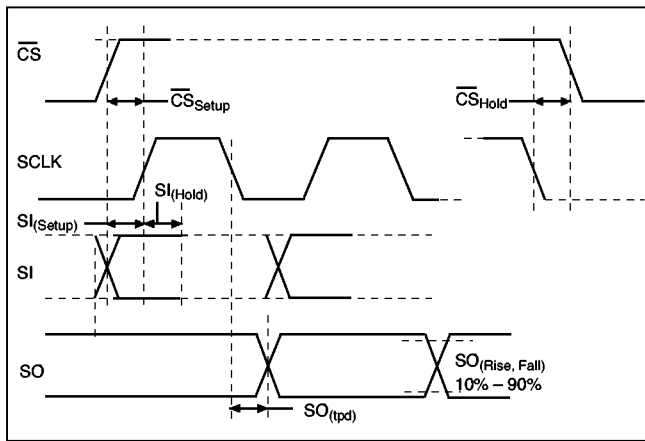


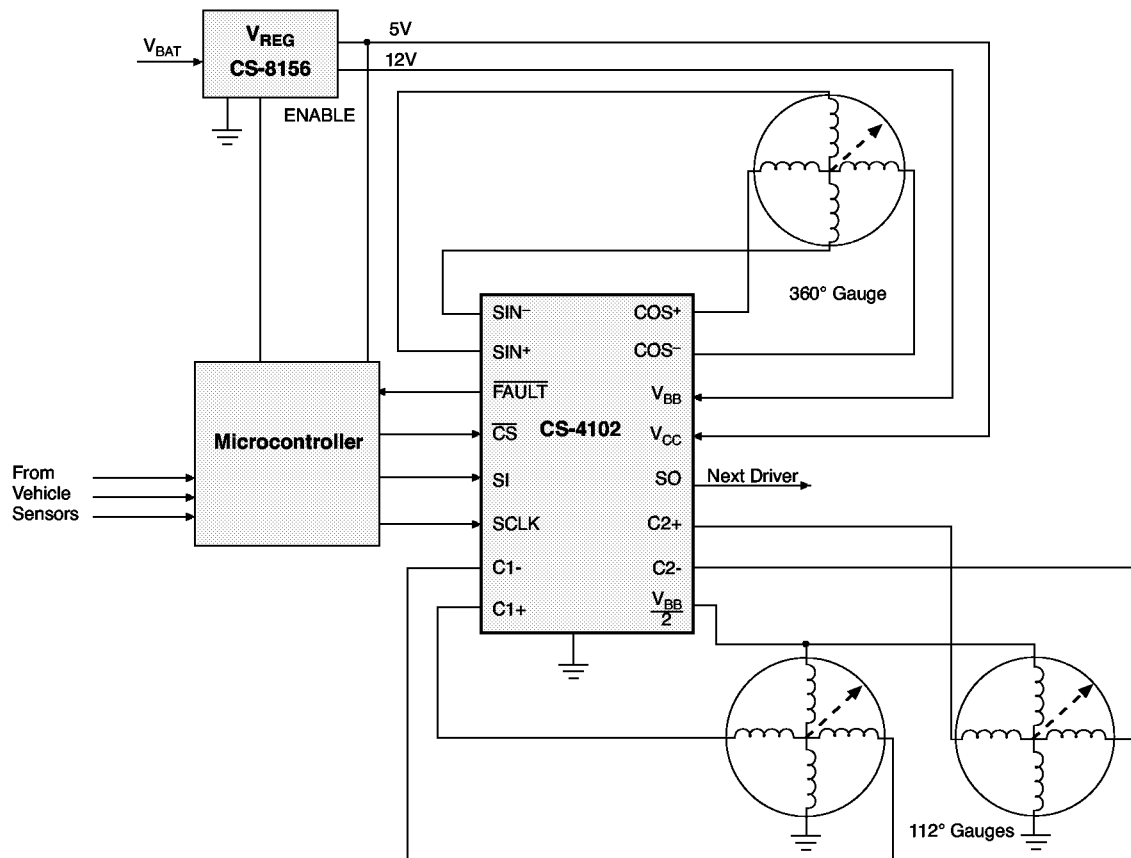
Figure 4. Serial data timing diagram

The DAC for the major gauge driver outputs 128 discrete levels selected by bits D6 – D0. These bits are XOR'd with D7 to invert them when choosing the 2nd half of each quadrant (each odd octant). This reduces the number of resistors and switches required. The MUX chooses which signals to send to the output amplifiers based upon D9 – D7. There are three choices for each amplifier: high, low or the DAC output.

The DAC's for the minor gauge drivers similarly output 128 discrete levels selected by bits D6 – D0. These bits are also XOR'd with D7 to invert them when choosing the 2nd half of the output range. The MUX chooses which signals to send to the output amplifiers based upon D7. There are two choices for each amplifier; high or the DAC output. Bits D8 and D9 are not used, but should be set to "00" to ensure that the minor gauge outputs are enabled.

The output buffers are unity gain amplifiers. Each of the 8 outputs is designed to swing close to the supply rails to maximize the voltage across the coils to produce maximum torque. Additionally, this lowers the power dissipation. The current for each output is also monitored. If any of the major gauge outputs exceed the maximum value, all of the major outputs are disabled. If any of the minor gauge outputs exceed the maximum value, all of the minor outputs are disabled. The falling edge of the \overline{CS} re-enables the outputs with the fault condition but they remain on only if the overcurrent situation has been eliminated.

Application Diagram



Package Specification

CS-4102

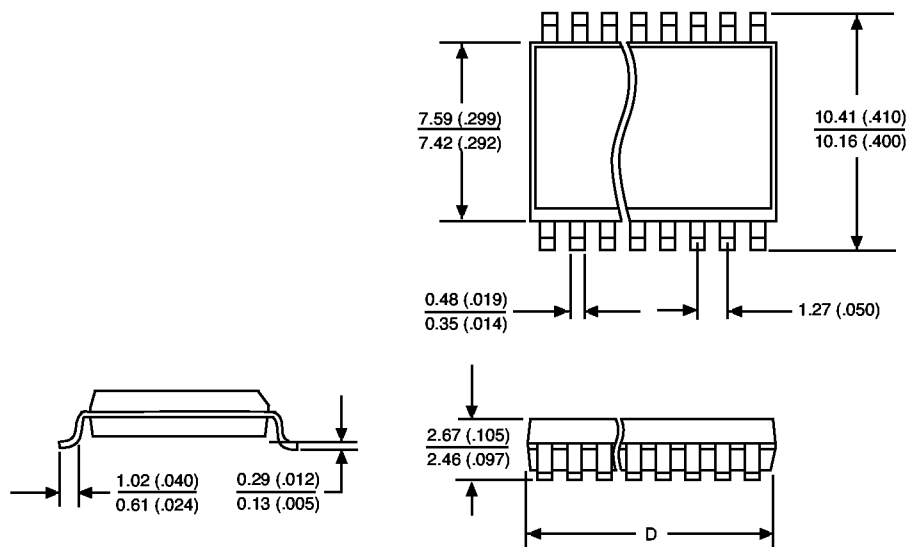
PACKAGE DIMENSIONS IN mm (INCHES)

Lead Count	D			
	Metric		English	
	Max	Min	Max	Min
24 Lead SOIC	15.54	15.29	.612	.602

PACKAGE THERMAL DATA

Thermal Data		24L SOIC (Internally Fused Leads)		
R _{θJC}	typ	9		°C/W
R _{θJA}	typ	55		°C/W

24 Lead SOIC



Ordering Information

Part Number	Description
CS-4102EDW24	24L SOIC (internally fused leads)

Preliminary

This product is in the preproduction stages of the design process. The data sheet contains preliminary data. Cherry Semiconductor Corporation reserves the right to make changes to the specifications without notice. Please contact Cherry Semiconductor Corporation for the latest available information.