

Surface Mount Oven Stabilized Oscillator BOX1SC Series

OCXO or VCOCXO

CONNOR WINFIELD



2111 Comprehensive Drive
Aurora, Illinois 60505
Phone: 630-851-4722
Fax: 630-851-5040
www.conwin.com

Description:

Connor-Winfield's high stability BOX1SC Series is an exceptionally precise frequency standard, excellent for use in cellular base stations, test equipment, Synchronous Ethernet and VSAT applications.

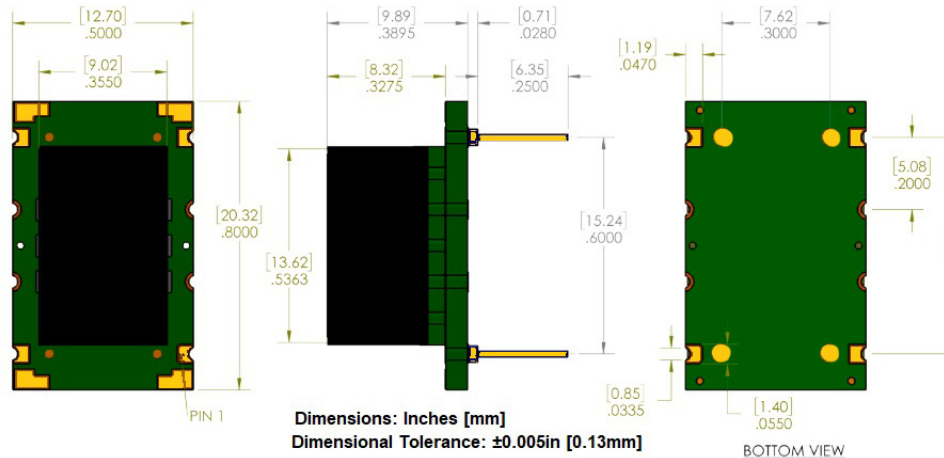
Based on an SC-cut crystal, the BOX1SC Series offers low aging and tight stability in a 12.7x20.3mm thru-hole DIP package.



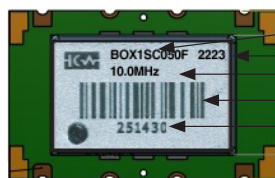
Features:

- OCXO or VCOCXO
- 3.3 Vdc Operation
- DIP Package
- Frequency Stability: ± 20 ppb or ± 50 ppb
- Temperature Ranges:
0 to 70°C, -20 to 75°C or -40 to 85°C
- Low Phase Noise
- LVCMOS Output
- RoHS Compliant / Lead Free

Package Outline



Marking Configuration



Part Number
Date Code
Frequency
Serial Number Barcode
Serial Number

Pad Connections

- | | |
|-----|------------------------|
| 1: | N/C or Voltage Control |
| 7: | Ground |
| 8: | Output |
| 14: | Supply Voltage (Vcc) |

Ordering Information

BOX1SC Oscillator Type 3.3 Vdc LVCMOS Output DIP OCXO	05 Frequency Stability 02 = ± 20 ppb 05 = ± 50 ppb 10 = ± 100 ppb	0 Temperature Range 0 = 0 to 70°C 1 = -20 to 75°C 2 = -40 to 85°C	F Voltage Control Option F = OCXO (Fixed Freq.) V = VCOCXO (Voltage Controlled)	-010.0M Output Frequency Frequency Format -xxx.xM Min * -xxx.xxxxxxM Max * * Number of allowable digits after the decimal point. M = MHz
--	--	--	---	---

Order Part Number Example: BOX1SC050F-010.0M



Bulletin	Cx323
Page	1 of 4
Revision	00
Date	13 Oct 2022



Attention: System Designers please review Application Note AN2093:
System Design Information and Printed Circuit Board Layout Guidelines for OCXO Oscillators.
@ www.conwin.com/technologies.html



Absolute Maximum Ratings

Parameter	Minimum	Nominal	Maximum	Units	Notes
Storage Temperature	-55	-	125	°C	
Supply Voltage - 3.3 Vdc (Vcc)	-0.5	-	4.5	Vdc	
Control Voltage (Vc)	-0.5	-	Vcc+0.5	Vdc	

Operating Specifications

Parameter	Minimum	Nominal	Maximum	Units	Notes
Center Frequency (Fo)	10	-	50	MHz	
Frequency Stability vs. Change in Temperature					
Option 02	-20	-	20	ppb	1
Option 05	-50	-	50	ppb	1
Operating Temperature Range					
Option 0	0	-	70	°C	
Option 1	-20	-	75	°C	
Option 2	-40	-	85	°C	
Frequency Calibration	-1.0	-	1.0	ppm	2
Frequency Stability vs Load	-20	-	20	ppb	±5%
Frequency Stability vs Voltage	-20	-	20	ppb	±5%
Aging: Daily	-	±2	±5	ppb/day	3
Aging: First Year	-0.3	-	0.3	ppm	
Total Frequency Tolerance (20 Years)	-3.0	-	3.0	ppm	4
Supply Voltage (Vcc)	3.13	3.30	3.47	Vdc	5
Power Consumption Vcc = Nominal Voltage					
Commercial Temperature Range: 0 to 70 °C					
Turn On	-	-	2.5	W	
Steady State @ 25°C	-	-	1.1	W	
Industrial Temperature Range: -40 to 85 °C					
Turn On	-	-	3.0	W	
Steady State @ 25°C	-	-	1.3	W	
Phase Jitter: (BW: 12 KHz to Fo/2 MHz)	-	0.25	0.35	ps RMS	
Allan Deviation (Tau=1s) Fo=10MHz	-	8.0E-11	-		
Start-Up Time	-	-	10	ms	6
Warm Up Time (Within Specification @ 25°C)	-	-	60	s	
Warm Up Time (Within Specification @ -40°C)	-	-	90	s	

CMOS Output Characteristics

Parameter	Minimum	Nominal	Maximum	Units	Notes
Load	-	15	-	pF	7
Output Voltage					
Output Voltage: High (Voh)	2.7	-	-	V	
Low (Vol)	-	-	0.3	V	
Output Current: High (Ioh)	-4	-	-	mA	
Low (Iol)	-	-	4	mA	
Duty Cycle at 50% of Vcc	45	50	55	%	
Rise / Fall Time: 10% to 90%	-	-	5.0	ns	

Typical Phase Noise Characteristics

Parameter	Fo=10 MHz	Fo=20.0MHz	Fo=40.0MHz	Units	Notes
@ 1 Hz offset	-85	-77	-72	dBc/Hz	
@ 10 Hz offset	-110	-107	-99	dBc/Hz	
@ 100 Hz offset	-136	-129	-126	dBc/Hz	
@ 1 KHz offset	-152	-148	-145	dBc/Hz	
@ 10 KHz offset	-154	-154	-160	dBc/Hz	
@ 100 KHz offset	-155	-155	-160	dBc/Hz	
@ 1MHz offset	-158	-157	-161	dBc/Hz	



*Attention: System Designers please review Application Note AN2093:
System Design Information and Printed Circuit Board Layout Guidelines for OCXO Oscillators.
@ www.conwin.com/technologies.html*

Bulletin	Cx323
Page	2 of 4
Revision	00
Date	13 Oct 2022



Input Characteristics - Voltage Controlled Option

Parameter	Minimum	Nominal	Maximum	Units	Notes
Control Voltage Range:	0.30	1.65	3.00	V	8
Frequency Pullability:	±3.0	±5.0	±10.0	ppm	9
Input Impedance	100K	-	-	Ohms	
Linearity	-	-	±5	%	

Package Characteristics

BOX1SC Series Package	Package consisting of FR4 substrate, Ryton R-4 cover, and gold flashed pins. Water Resistant package, non-hermetic seal. (Engineering Properties of Ryton R-4 Application Note AN2100)
Moisture Sensitivity Level	MSL-1

Environmental Characteristics

Shock	500 G's 1ms, Halfsine, 3 shocks per direction, per MIL-STD 202G, Method 213B Test Condition D.
Sinusoidal Vibration	0.06" D.A. or 10G's Peak, 10 to 500 Hz, per MIL-STD-202G, Method 204D, Test Condition A.
Random Vibration	5.35 G's rms. 20 to 2000 Hz per MIL-STD-202G, Method 214, Test Condition 1A, 15 minutes each axis.
Moisture	10 cycles, 95% RH, Per MIL-STD-202G, Method 112.
Marking Permanency	Per MIL-STD-202G, Method 215J.

Recommended Cleaning Process: (If required)

Device is non-hermetic, water resistance with four weep holes, one in each corner to allow moisture to be removed during the drying cycle. We recommend in-line warm water wash with air knife and drying capabilities. If cleaner does not have drying capability, then use hot air circulated oven. Boards should be placed in the oven vertically for good water runoff.

Device must be dried properly prior to use!

Note: If saponifier is used make sure the device is rinsed properly to insure all residues are removed. PH of saponifier should not exceed 10.

Drying Temperature: Between 85 to 100°C.

Drying Time: Time will vary depending on the board size.

Caution: Do not submerge the device!

Notes:

1. Frequency stability vs. change in temperature. $[\pm(F_{max} - F_{min}) / (2 \cdot F_0)]$.
2. Initial calibration @ 25°C. For OCXO with voltage control option, the control voltage must be fixed.
3. After 10 days of operation
4. Inclusive of calibration @ 25°C, frequency vs. change in temperature, change in supply voltage (±5%), load change (±5%), shock and vibration and 20 years aging
5. Minimum "Power On Time" after rail rises from 0 to within +/-5% of Vcc = 1 second. Supply voltage must reach Vcc level monotonically.
6. 10ms start time is guaranteed when supply voltage reaches Vcc level monotonically.
7. Attention: To achieve optimal frequency stability, and in some cases to meet the specification stated on this data sheet, it is required that the circuit connected to this OCXO output must have the equivalent input capacitance that is specified by the nominal load capacitance. Deviations from the nominal load capacitance will have a graduated effect on the stability of approximately 20 ppb per pF load difference.
8. Positive slope. (Frequency increases as Vc voltage increases). To ensure proper operation of VCOCXO's, the control voltage input must be biased the nominal control voltage. Failure to bias the Vc input may cause an unstable output condition.
9. Referenced to Fo.

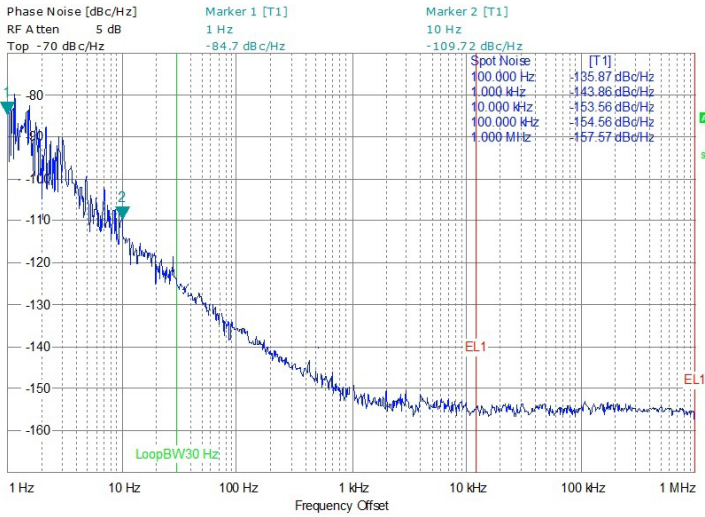


Attention: System Designers please review Application Note AN2093:
System Design Information and Printed Circuit Board Layout Guidelines for OCXO Oscillators.
[@ www.conwin.com/technologies.html](http://www.conwin.com/technologies.html)

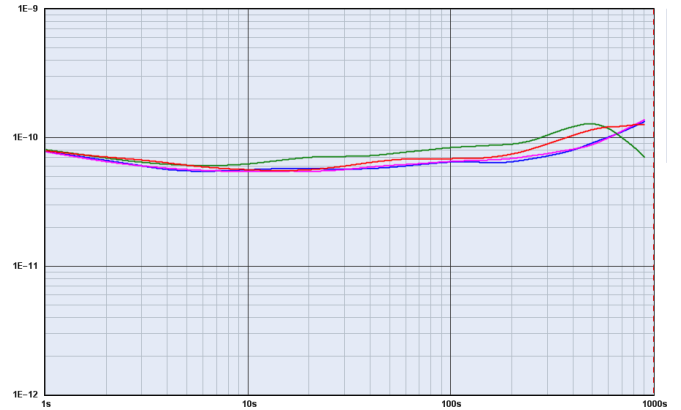
Bulletin	Cx323
Page	3 of 4
Revision	00
Date	13 Oct 2022



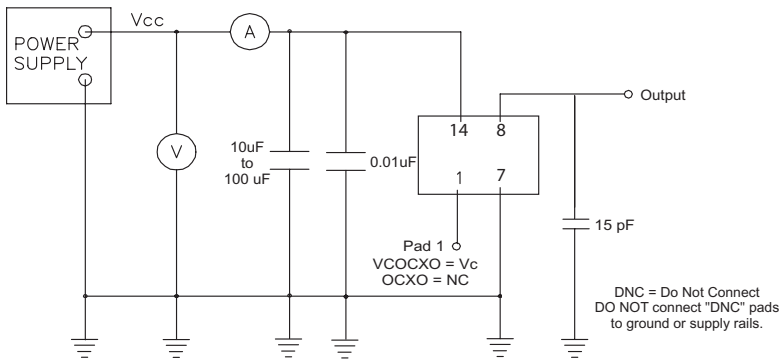
Typical Phase Noise (Fo=10MHz)



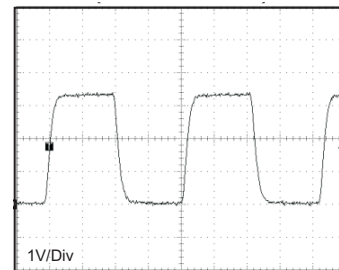
Typical ADEV (Fo=10MHz)



LVC MOS Test Circuit



CMOS Output Waveform



Revision History

Revision	Date	Note
00	10/13/22	New issue



Attention: System Designers please review Application Note AN2093:
 System Design Information and Printed Circuit Board Layout Guidelines for OCXO Oscillators.
 @ www.conwin.com/technologies.html

Bulletin	Cx323
Page	4 of 4
Revision	00
Date	13 Oct 2022