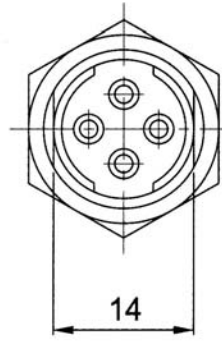
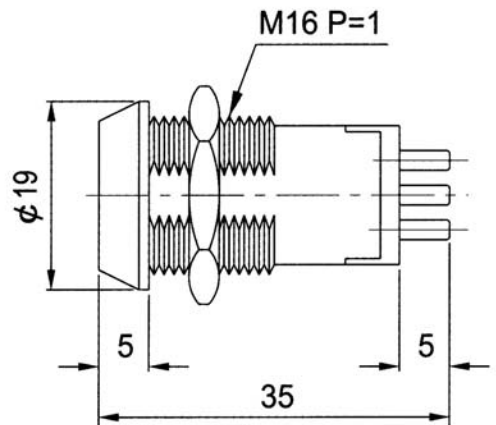
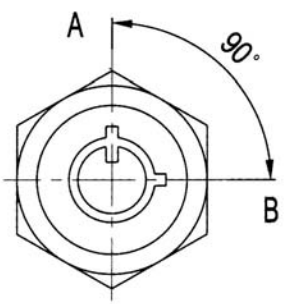
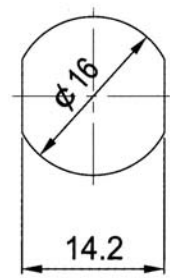
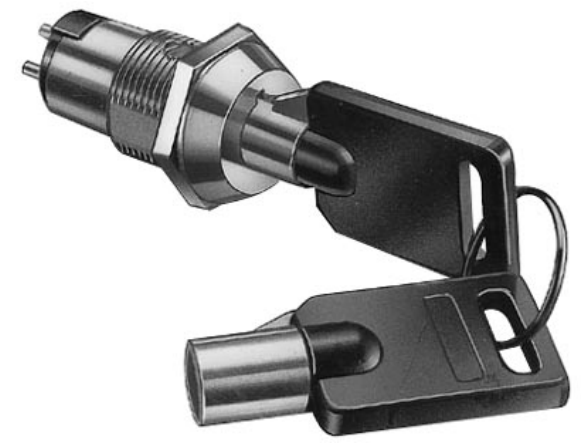


- - Off position
- ▬ - Indicates key pull
- - Indicates no key-pull



SPECIFICATIONS

- Zinc alloy die cast housing and cylinder
- Bright chrome plated standard
- 7 pin tumbler mechanism
- Steel tubular keys, chrome plated, plastic cover
- Key-pull in both positions
- Silver plated contacts and terminals
- 2 positions (on-on), 4 terminals
- Hex nut mounted
- All keyed alike or one combination per 100pcs standard
- 10,000 key combinations available

Series	Style	Key combinations
SWTK	S314-1	X
Key lock switch	ø16mm cylinder, key-pull in both positions	A=All keyed alike B=One combination per 100pcs (up to 10,000 combinations) C=Customer specified

RoHS compliant

Rev.	Description	Date	Approved	Drawing	Name	Date
				Approved	Howard	08/10/99
				Checked	Lizzy	08/10/99
				Drawn	Tina	08/10/99
				0.0 ± 0.35	0.00 ± 0.20	Angles ± 3'
				UNIT: mm		

Central Components Manufacturing
 440 Lincoln Blvd., Middlesex, New Jersey 08846
 Phone 732 469-5720 888 288-5152 Fax 732 469-1919

Part No.: **SWTK-S314-2-X**
 Description: Mid-size switch lock, 16mm diameter, key-pull in both positions