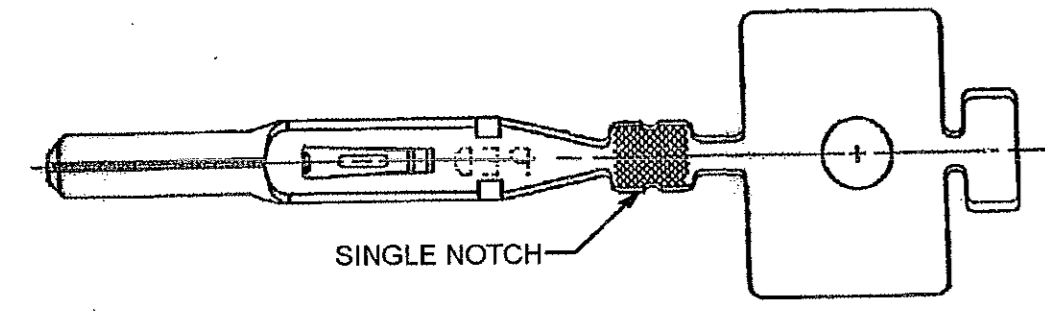
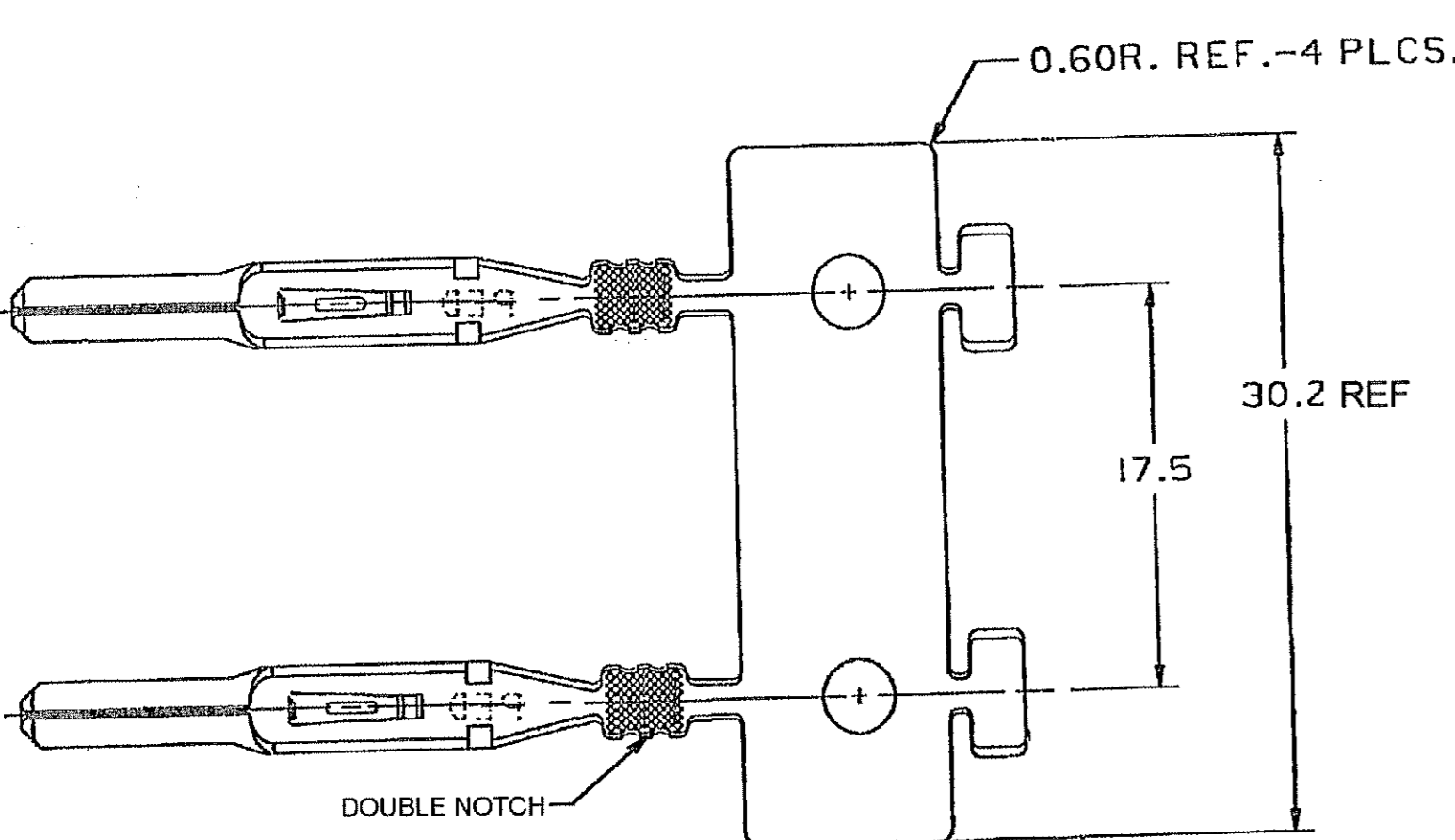


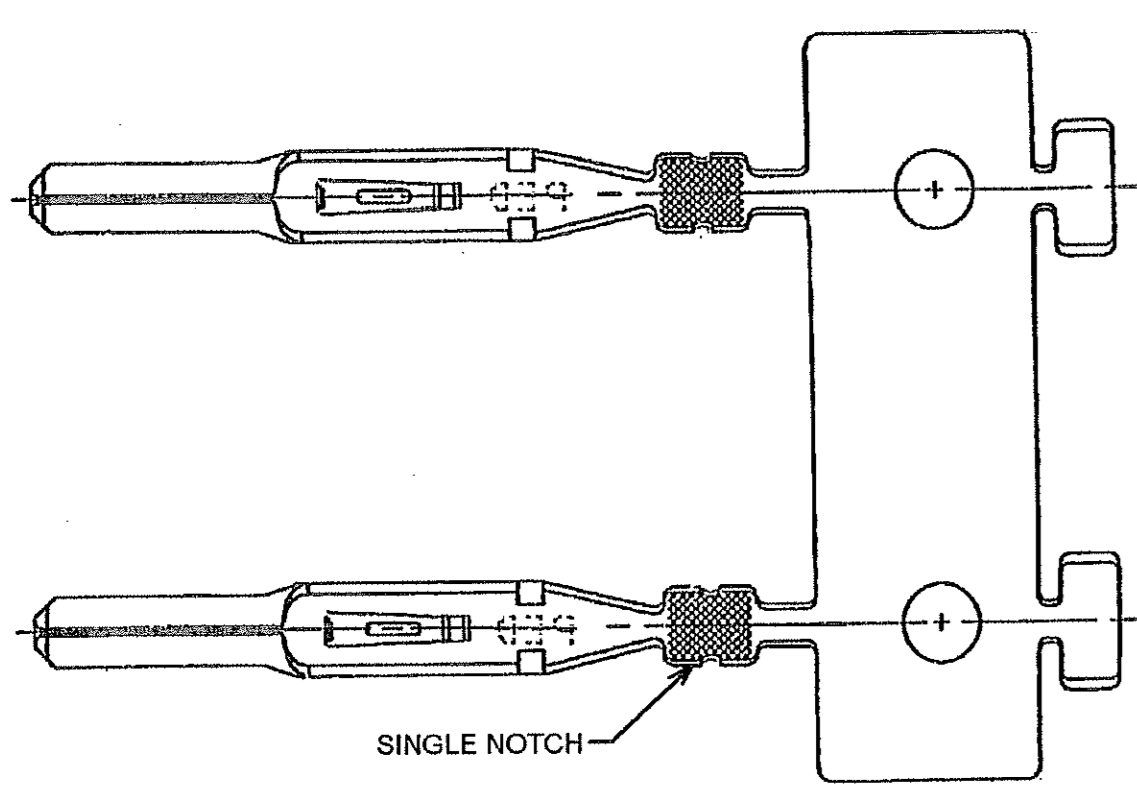
TYPE 201



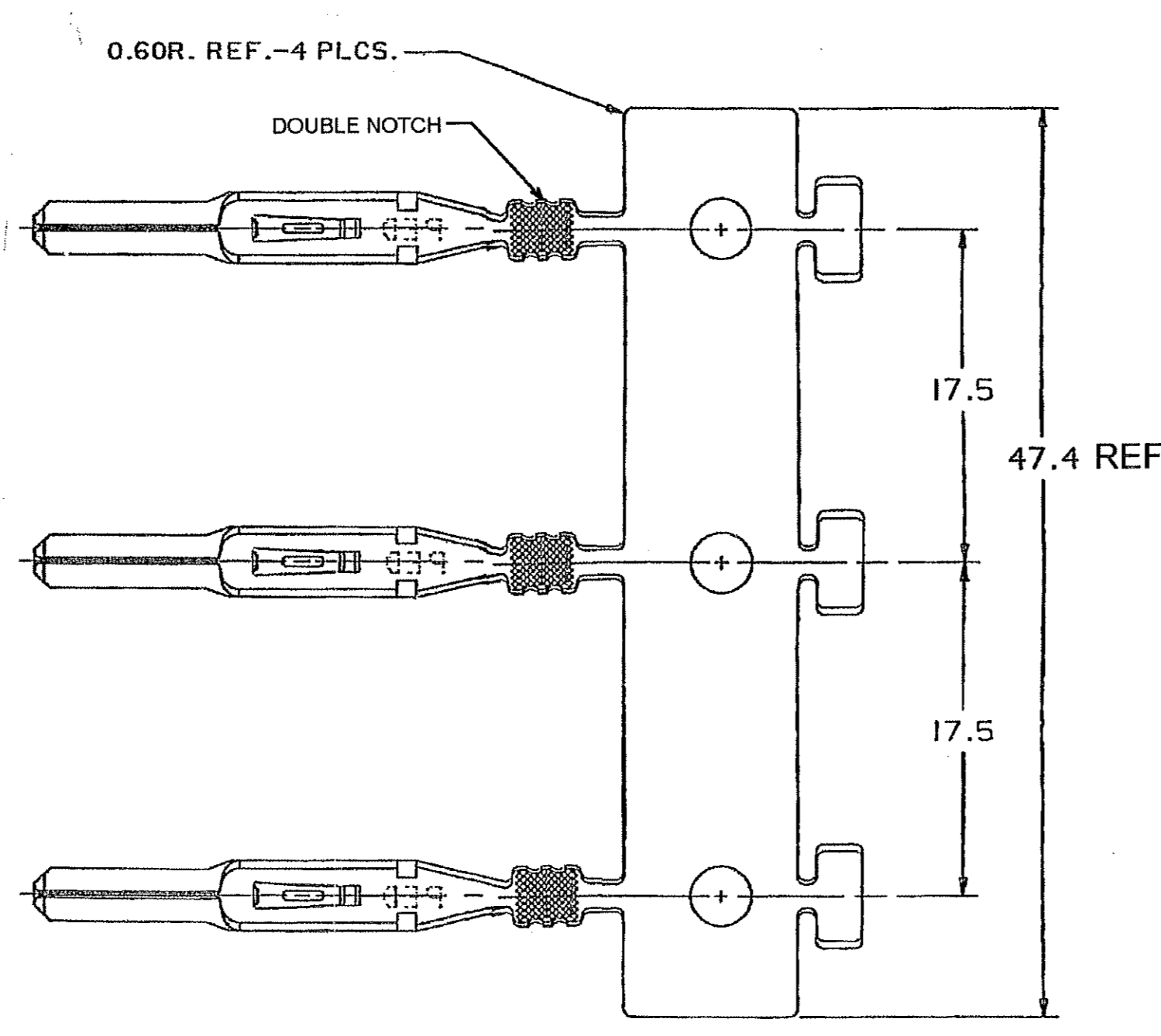
TYPE 202
SAME AS TYPE 201
EXCEPT AS SHOWN



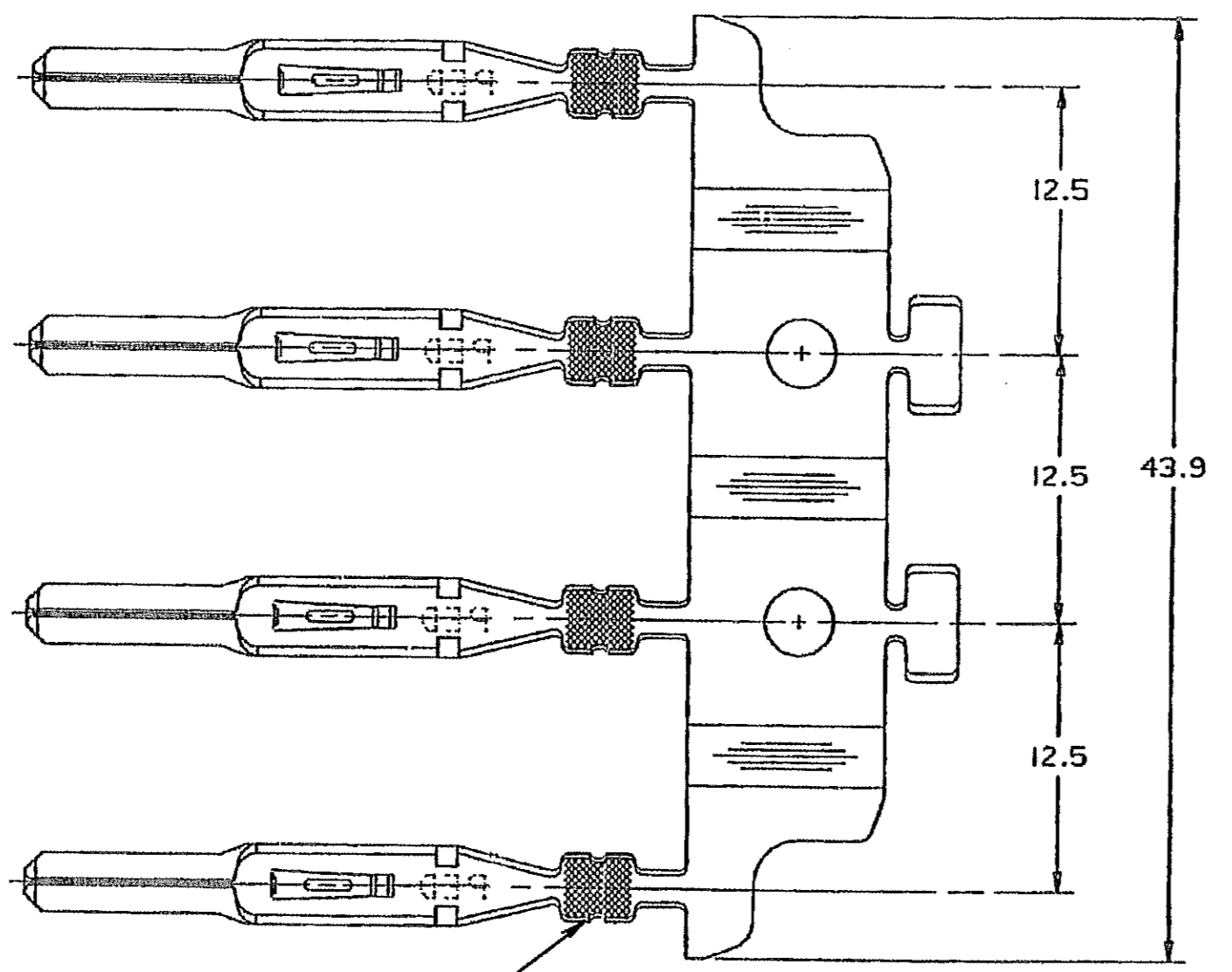
TYPE 203
SAME AS TYPE 201
EXCEPT AS SHOWN



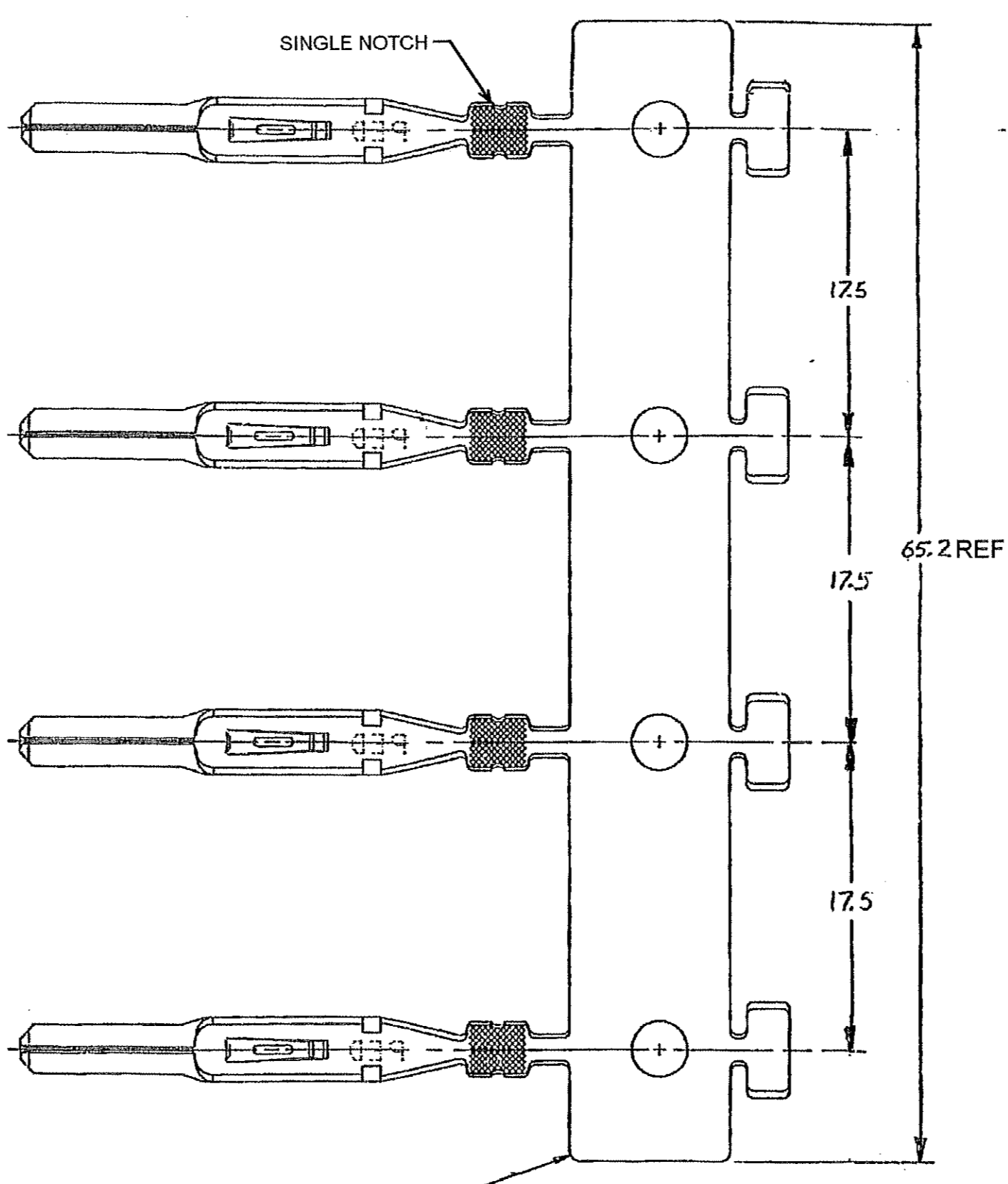
TYPE 204
SAME AS TYPE 203
EXCEPT AS SHOWN



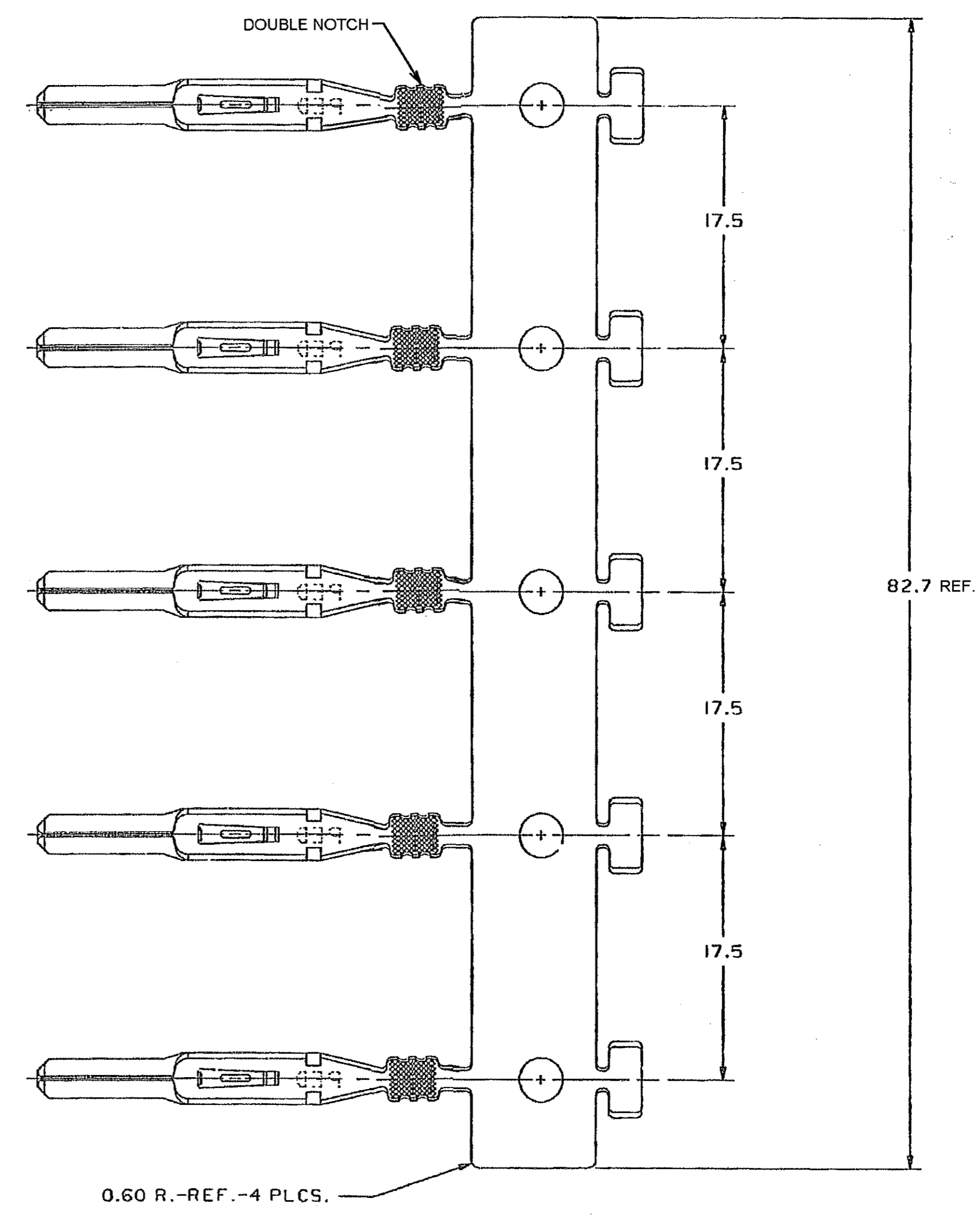
TYPE 205
SAME AS TYPE 201
EXCEPT AS SHOWN



TYPE 206
SAME AS TYPE 202
EXCEPT AS SHOWN



TYPE 207
SAME AS TYPE 206
EXCEPT AS SHOWN

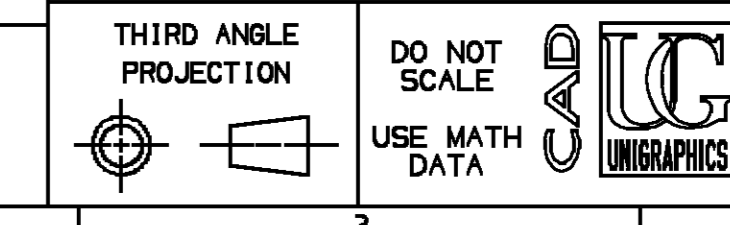


TYPE 208
SAME AS TYPE 201
EXCEPT AS SHOWN

PART NO	REV	N/P	STATUS	BASIC TERM	PART NO	REV	N/P	STATUS	BASIC TERM	TYPE	SIZE (MM ²)	CABLE DIA	ID
12059239	A1		OBSOLETE	(5) 12033921	12124332	A1		(4) 12124331	207		3.80-2.45	3.80-2.45	13
12066126	A2			(2) 12033922	12162064	A1		(1) 12162063	208		3.97-2.48	3.97-2.48	15
12041441	B2		OBSOLETE	(4) 12041440					202		3.97-2.48	3.97-2.48	15
12040563	B1			(3) 12033921	12124341	A1		(3) 12047644	204		0.8-0.5	3.12-2.03	19
12034020	B1			(1) 12033923					206		5.0-3.0	5.24-3.49	11
12033691	B1			(1) 12033921	12047645	A1		(1) 12047644	201		0.8-0.5	3.12-2.03	19
12033689	B1			(2) 12033921	12124329	A1		(2) 12047644	203		0.8-0.5	3.12-2.03	19
12033688	B1			(1) 12033922	12124328	A1		(1) 12124331	202		2.0-1.0	3.97-2.48	15

- NOTES
- UNLESS OTHERWISE SPECIFIED AND/OR INDICATED: DIMENSIONS ARE TO FACE OF VIEW SHOWN.
 - REFERENCE MATING COMPONENTS OR EQUIVALENT: TERMINAL 12015823
 - UNUSED CORE WINGS CAN BE CRIMPED OR UNCRIMPED. RESULTS MUST BE C.C.H. OF 3.80 MAX AND C.C.W. OF 3.80 MAX.
 - UNUSED INSULATION WINGS CAN BE CRIMPED WITH ANY TOOLING. RESULT MUST BE I.C.H. OF 4.50 MAX AND I.C.W. OF 4.00 MAX.

TOLERANCE UNLESS OTHERWISE SPECIFIED:
DECIMAL: ONE PLACE ±0.3 ANGULAR ±2°
TWO PLACE ±0.15



PART DRAWING	
STYLE	
VOLUME 10/11	DISTR CODE
	D
UNLESS OTHERWISE SPECIFIED THIS DOCUMENT IS IN ACCORDANCE WITH ASME Y14.5M-1994 AS MODIFIED BY THE M SCHEM. DIMENSIONS AND TOLERANCES ARE IN MILLIMETERS UNLESS OTHERWISE SPECIFIED. SEPARATE MATING OF FEATURES MAY BE BASED SEPARATELY PER RELEASE OF DATA REFERENCES.	
ALL DIMENSIONS ARE IN MILLIMETERS	
REFERENCE 12015085	

DELPHI
DELPHI PACKARD ELECTRICAL/ELECTRONIC ARCHITECTURE
NAPER, OH

DR	DATE
APV01 TERRI L BOZIS	04AP85
APV02 G. FERANCE	15AP85
APV03 F. MLAKER	17AP85
APV04	
APV05	

SUBSTANCES OF CONCERN AND RECYCLED CONTENT PER DELPHI 10949001

DRAWING NAME: TAXI TERM M M/P 280

DRAWING NUMBER: 12033920

SIZE	SCALE	FRAME NO	SHEET NO	REV	N/P
A0	NONE	1	2	OF	11

DATE	STG	REV	N/P	CHG	ZONE	REVISION HISTORY	AUTH	DR	APV01	APV02
04AP85	R	01	-	-	-	12059239 - ADDED & RELEASED TO REV A	85005	TLB	BF	
23JNB6	R	02	-	-	-	1205923-ADDED COIN; NO REV UPDATE REQ'D	106734	JP	RS	
23JNB6	R	03	-	-	-	1259239 - FULL KNURLS WERE PARTIAL; NO REV UPDATE REQ'D	106870	JP	RS	
130C88	R	04	-	-	-	12041441 - OBSOLETE, NO REV UPDATE REQ'D	880003	AP	TM	
28NO88	R	05	-	-	-	12059239 - REVISED NAME & REMOVED STRIP, DETECT & PATENT PENDING; NO REV UPDATE REQUIRED	123383	JAR	FH	
10MR92	R	06	-	-	-	12124328, 12124329, 12124332 & 12124341 RELEASED TO REV A	920005	WG	HH	
10FE93	R	07	-	-	-	12124332 - RELEASED TO REV A	153946	GH	GH	
08SE93	R	08	-	-	-	12162064 - RELEASED TO REV A	930005	GH	GH	
03MR06	R	09	-	-	-	12059239 - OBSOLETE	278029	8PS	JAA	
30NO06	R	10	-	-	-	ALL PARTS EXCEPT 12059239 AND 12124332 - ADDED FROM SHEET 1; ALL PARTS - REVISED	287445	TLD	TLD	TM
17AP07	R	11	-	-	-	12041441, 12066126 - REVISED STATUS	401143	EFS	AUG	WTM