

product: DELPHI PN 13580594
 material: CUFE2P
 surface: F.SN3
 material thickness: 0,25 mm
 cross section [mm²]: 0,35

 strip length: 3,40 mm
 cable type: FLRY-B
 insulation \varnothing [mm]: 1,20 - 1,40
 seal: DPN 15327913

**Uncontrolled
Copy**
For Information only!

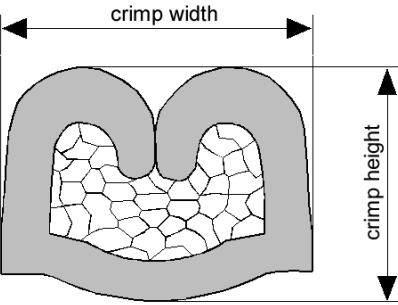
conductor dimension					crimp dimension [mm]						
cable type	cross sect. [mm²]	struct. n x d [mm]	insul. diam. [mm]	tear-out force [N]	core		insulation				
					height $\pm 0,03$	width $\pm 0,10$	height $\pm 0,10$	width $\pm 0,10$	height \pm tol.	width \pm tol.	
FLRY-B	0,35	12 x 0,21	1,30	50	0,95	1,45	3,00	3,05			

core:
 C-1.40-2.5-6-X
 DPN 10713739

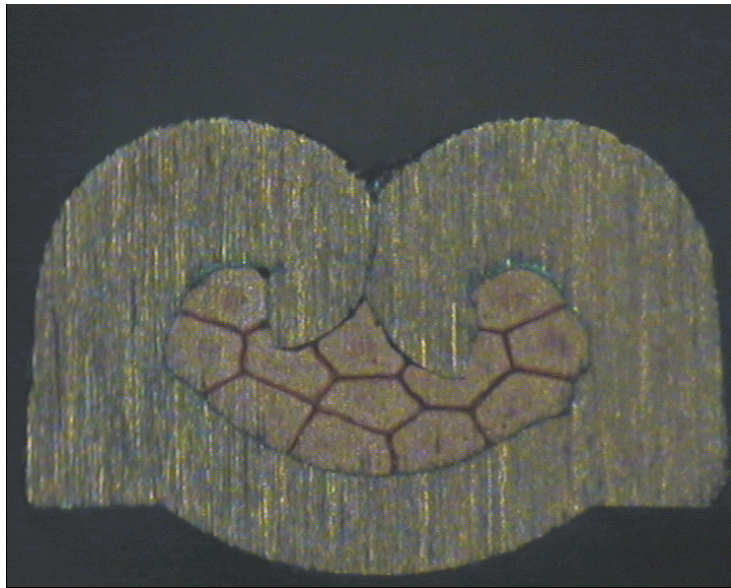
insulation:
 IS-3.00-3.0-12
 DPN 10713804

anvil:

two piece anvil:
 AC-1.40-2.75-A
 DPN 10803652
 AI-3.00-3.6-0.6
 DPN 10770037



DELPHI PN 13580594



cable:

0,35 mm² = 12 x 0,21 mm

crimp height:

0,95 mm

crimp width:

1,45 mm