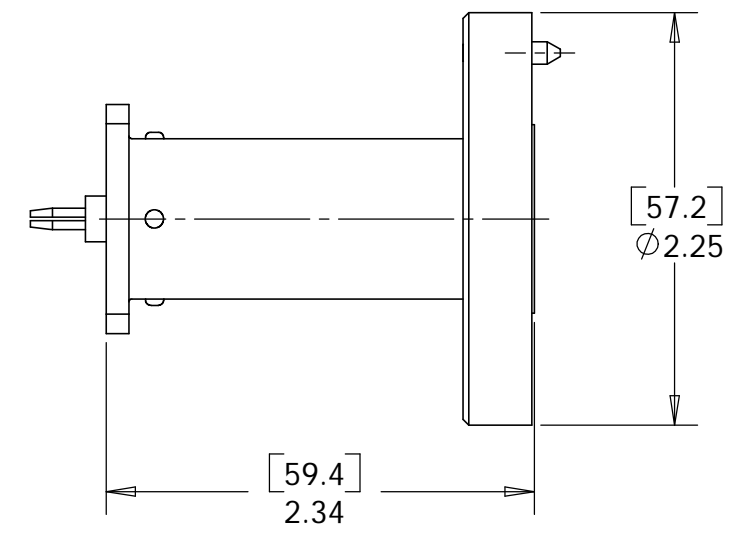
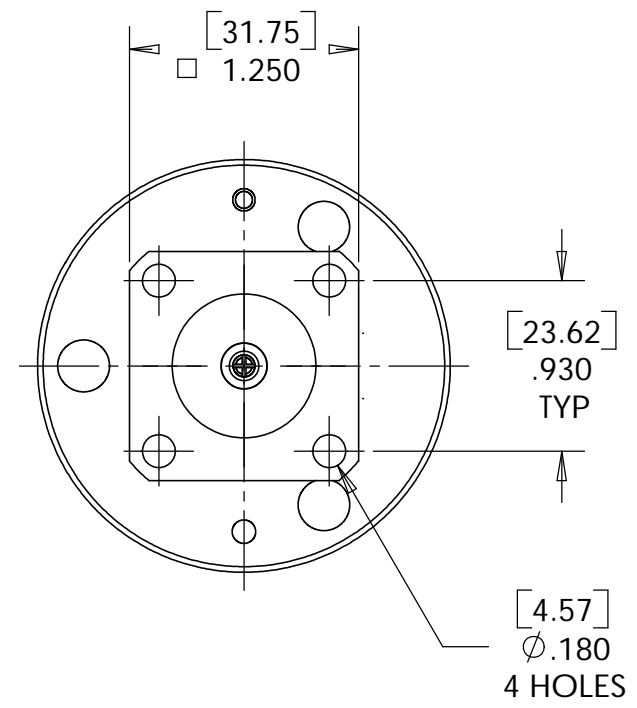
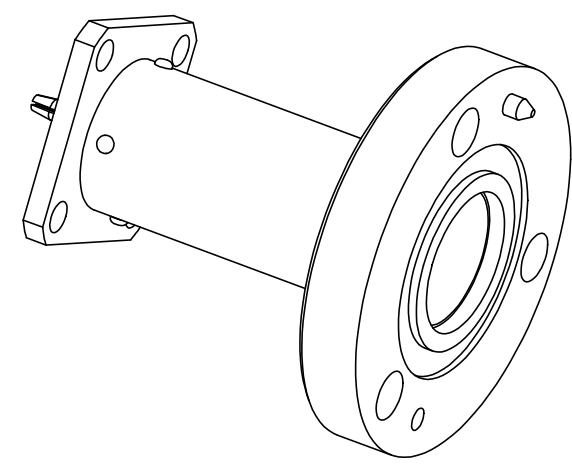


This document, including the design, configuration and mechanical features revealed herein are the sole, confidential and proprietary property of TRU Corporation. Reproduction or use thereof, in whole or part, is prohibited without the prior written consent of TRU Corporation.

REV.	DESCRIPTION	DATE	APPROVED
-	ORIGINAL ISSUE	10/30/96	RMK
A	CHANGED PER ECO 2173	3/24/03	DA
B	CHANGED PER ECO 2719	8/21/06	AM


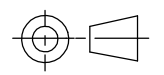


**ENGINEERING DATA:**

**MATERIAL:**  
 BODY: BRASS  
 CONTACT: BERYLLIUM COPPER  
 INSULATORS: PTFE (TEFLON)

**FINISH:**  
 BODY: NICKEL PLATED  
 CONTACT: SILVER PLATED

**NOTES:**  
 1. UNLESS OTHERWISE SPECIFIED; ALL DIMENSIONS ARE REFERENCE ONLY.  
 2. ALL DIMENSIONS ARE INCHES, BRACKETED DIMENSIONS ARE IN mm.

MATERIAL	DO NOT SCALE DRAWING	DRAWN JDW	DATE 10/30/96	 <b>TRU CORPORATION</b> 245 LYNNFIELD STREET, PEABODY, MA 01960 The Custom Interconnect Leader™
	UNLESS OTHERWISE SPECIFIED: DIMENSIONS ARE IN INCHES	ENG APPR. Koch	DATE 10/30/96	
COMMENTS:	TOLERANCES: FRACTIONS: ±1/64 .XX : ±.01 .XXX: ±.005 ANGLES: ±1/2° MACHINED SURFACES: 63/√	MFG APPR.	DATE	TITLE: 7/8-50 EIA to QC(m), ADAPTER SWIVEL FLANGE, NO BULLET
		OTHER APPR.	DATE	
path: S:\Warren - WIP\ECO-2719\	THIRD ANGLE PROJECTION 	SIZE <b>B</b>	DWG. NO. TRU-6851	REV <b>B</b>
surface area: sq inch      weight: 0.51 lbs		CAGE CODE: 92180	SCALE: 1:1	SHEET 1 OF 1