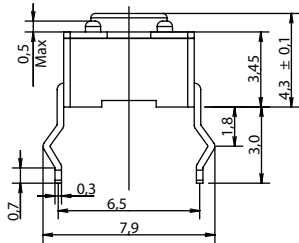


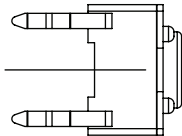
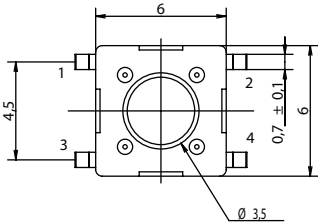
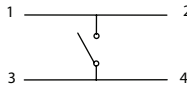
PTS645 Series 6 mm Tact Switches

TERMINATION

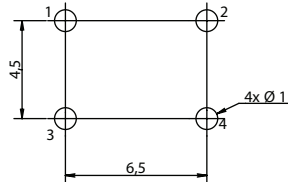
S STRAIGHT



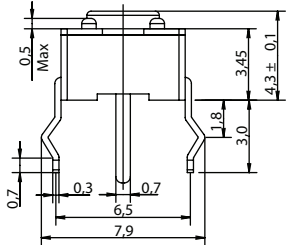
SCHEMATIC



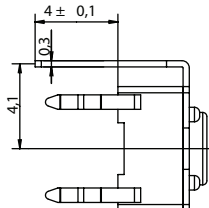
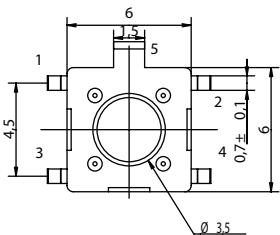
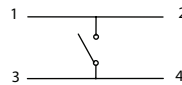
PCB LAYOUT



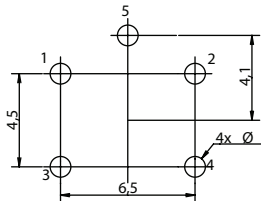
T STRAIGHT WITH ESD PIN



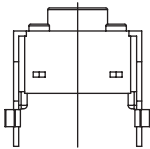
SCHEMATIC



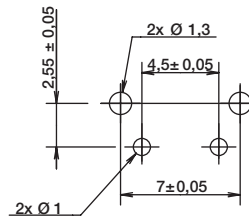
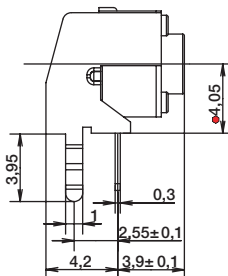
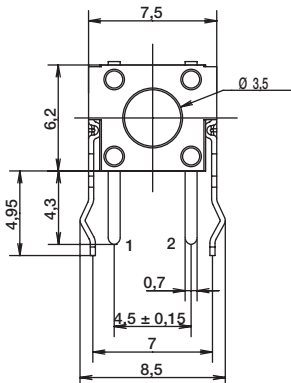
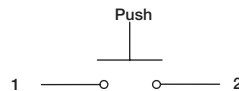
PCB LAYOUT



V VERTICAL THT



SCHEMATIC



PCB LAYOUT



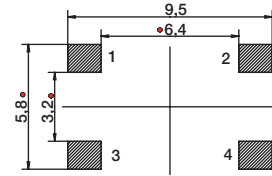
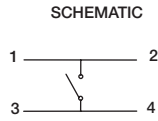
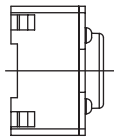
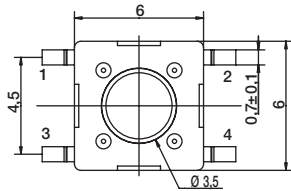
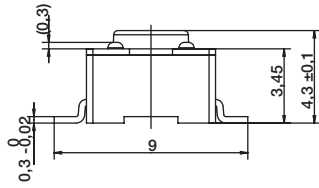
Dimensions are shown: mm
Specifications and dimensions subject to change



PTS645 Series 6 mm Tact Switches

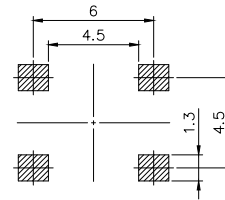
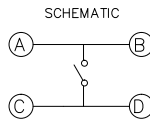
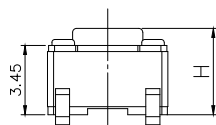
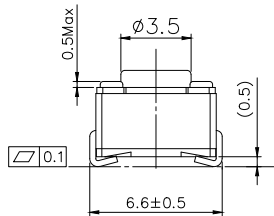
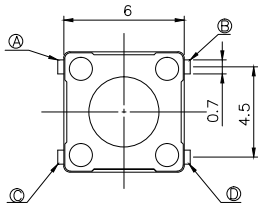
TERMINATION

SMT G Type



PCB LAYOUT

SMT J Type



PCB LAYOUT



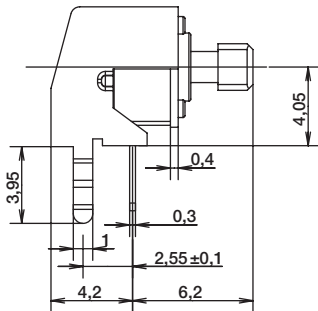
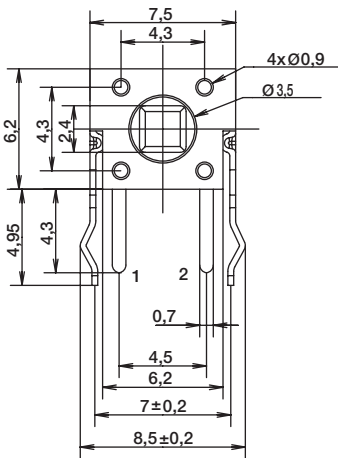
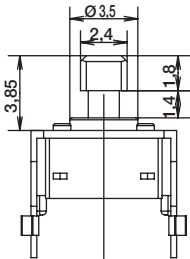
B

Tactile Switches

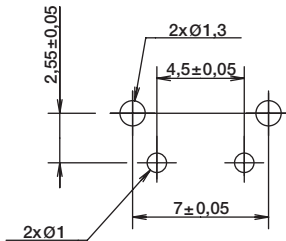
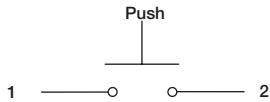
ACTUATOR SHAPE

J SQUARE ACTUATOR

VERTICAL THT - FOR 6.15MM LENGTH ONLY

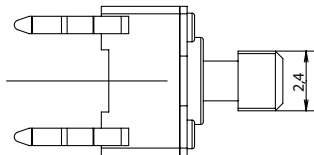
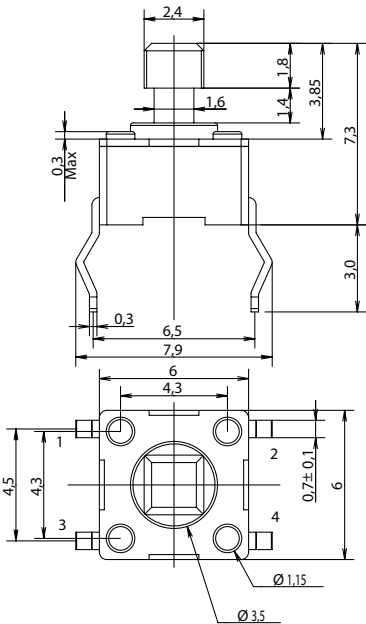


SCHEMATIC

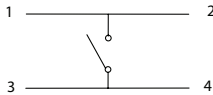


RECOMMENDED PCB LAYOUT

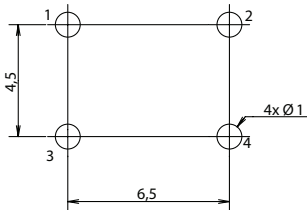
STRAIGHT THT - FOR 7.3MM HEIGHT ONLY



SCHEMATIC



RECOMMENDED PCB LAYOUT



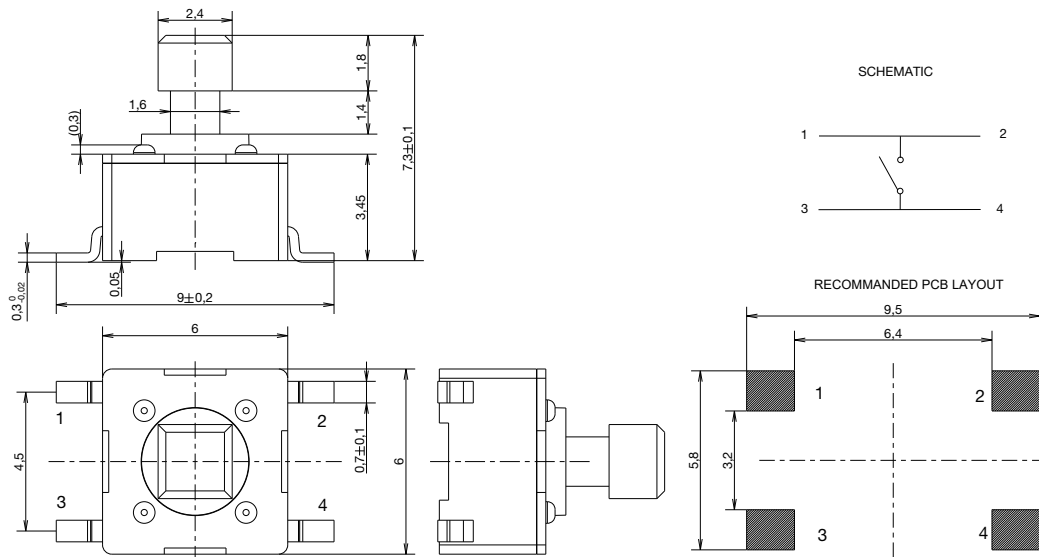
First Angle
Projection



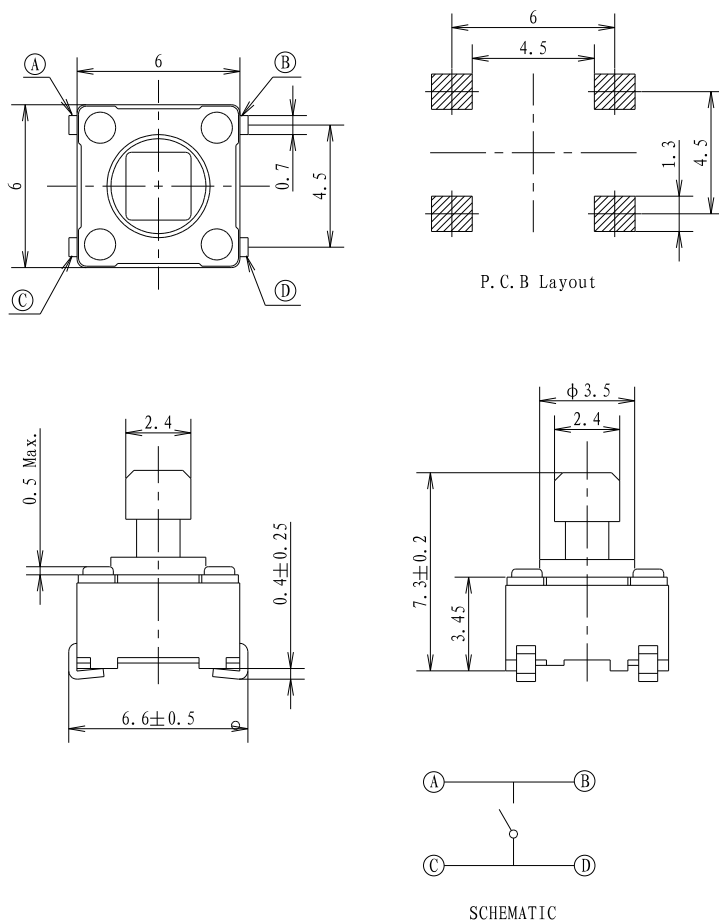
PTS645 Series 6 mm Tact Switches

ACTUATOR SHAPE

STRAIGHT SMT G TYPE - FOR 7.3MM HEIGHT ONLY



STRAIGHT SMT J TYPE - FOR 7.3MM HEIGHT ONLY

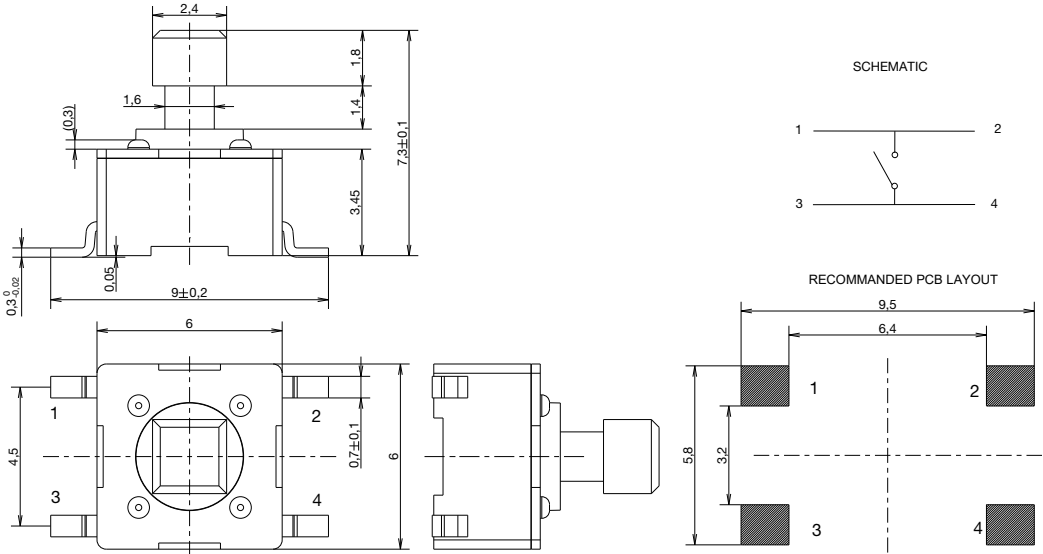


Dimensions are shown: mm
Specifications and dimensions subject to change

PTS645 Series 6 mm Tact Switches

ACTUATOR SHAPE

STRAIGHT SMT - FOR 7.3MM HEIGHT ONLY



Tactile Switches

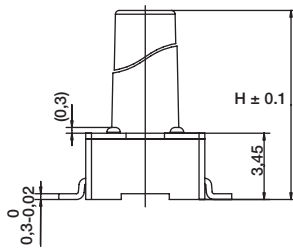
B

PTS645 Series 6 mm Tact Switches

ACTUATION FORCE

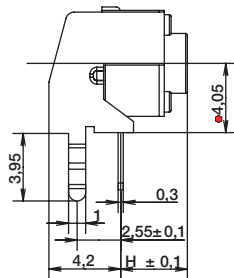
OPTION CODE	FORCE
L	130 grams Black
M	160 grams Blue
H	200 grams Gray
K	260 grams Red

ACTUATOR HEIGHT



Switch height from PCB for S and T only

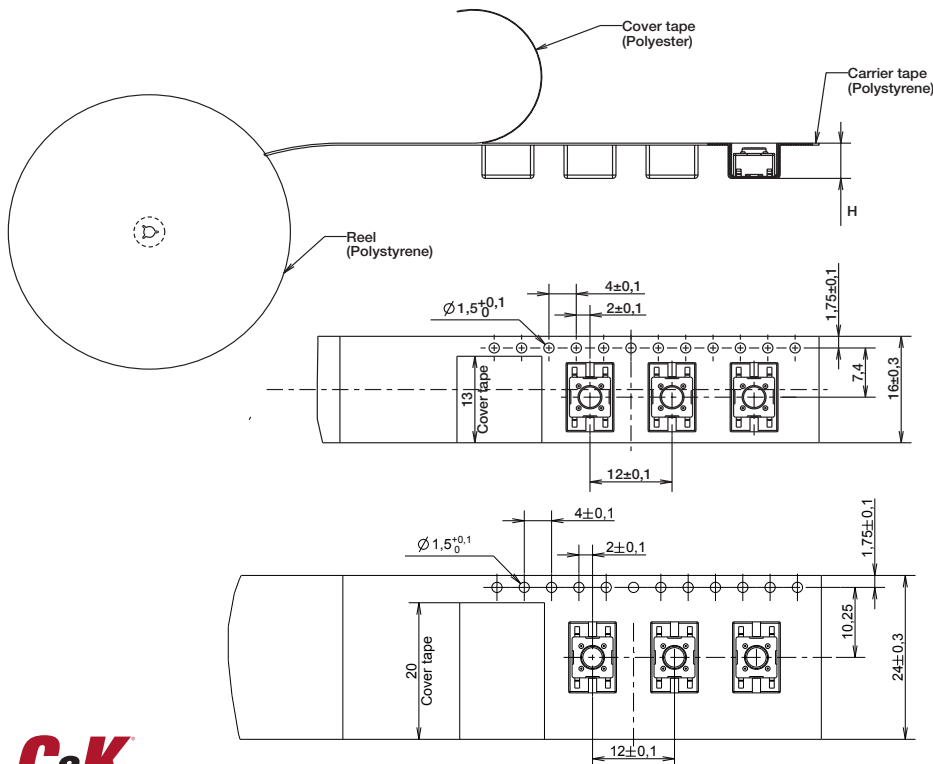
OPTION CODE	DIMENSION H	TERMINATION	SCHEMATIC	
			Without EMC pin	With EMC pin
43	4,3 (.169)	Thru-hole and SMT		
50	5,0 (.197)	Thru-hole and SMT		
70	7,0 (.275)	Thru-hole and SMT		
95	9,5 (.374)	Thru-hole and SMT		
13	13,0 (.512)	SMT		



Switch length from front leads for V only

OPTION CODE	DIMENSION H	TERMINATION	SCHEMATIC	
			Without EMC pin	With EMC pin
31	3,15 (.124)	Vertical		
39	3,85 (.151)	Vertical		
58	5,85 (.230)	Vertical		
83	8,35 (.329)	Vertical		

TAPE & REEL FOR SMT G TYPE VERSIONS



OPTION CODE	WIDTH TAPE	POCKET HEIGHT
43	16 ± 0.3	5.3
50	16 ± 0.3	5.3
70	16 ± 0.3	7.3
73	16 ± 0.3	7.6
95	24 ± 0.3	10.3
13	24 ± 0.3	13.3

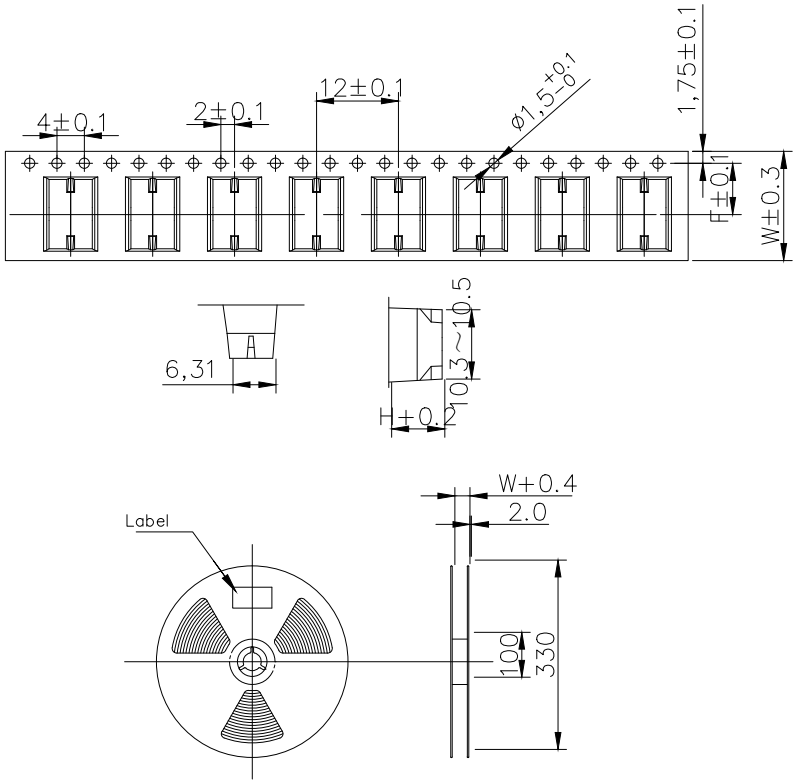


Dimensions are shown: mm
Specifications and dimensions subject to change

PTS645 Series 6 mm Tact Switches

TAPE & REEL FOR SMT J TYPE VERSIONS

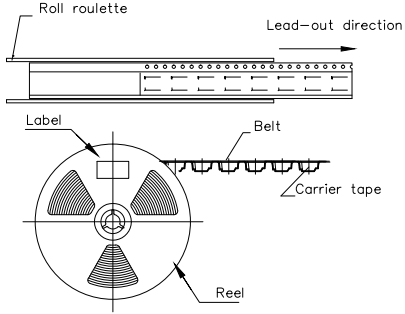
Tactile Switches B



Tape specifications

Product height (h)mm	Carrier tape width (W)mm	Center distance of carrier tape (F)mm	pcs/reel
4.3	16	7.5	1000
5.0	16	7.5	1000
7.0	16	7.5	700
7.3	16	7.5	700
9.5	24	11.5	500
11	24	11.5	500
13	24	11.5	500

Note: The disc rotates counterclockwise. According to the packing shown in the figure, the braid must not be twisted to prevent product deformation;



14 Apr 22



Dimensions are shown: mm
Specifications and dimensions subject to change

Mouser Electronics

Authorized Distributor

Click to View Pricing, Inventory, Delivery & Lifecycle Information:

C&K Switches:

[PTS645SL95](#) [PTS645SL43](#) [PTS645SL70](#) [PTS645SL50](#) [PTS645SH43](#) [PTS645SH70](#) [PTS645SH95](#) [PTS645SH50](#)
[PTS645SL43SM](#) [PTS645TJL73](#) [PTS645SJL73](#) [PTS645TH43](#) [PTS645TH50](#) [PTS645TH95](#) [PTS645TH70](#)
[PTS645VL83](#) [PTS645VL31](#) [PTS645VL15](#) [PTS645VL58](#) [PTS645VL39](#) [PTS645SH43SM](#) [PTS645TL95](#) [PTS645TL70](#)
[PTS645TL43](#) [PTS645TL50](#) [PTS645VH39](#) [PTS645VH83](#) [PTS645VH15](#) [PTS645VH58](#) [PTS645VH31](#)
[PTS645SM43SMTR LFS](#) [PTS645SH70 LFS](#) [PTS645VL39 LFS](#) [PTS645SL50 LFS](#) [PTS645SJL73 LFS](#)
[PTS645SM43TR LFS](#) [PTS645VH58 LFS](#) [PTS645VL58 LFS](#) [PTS645VL83 LFS](#) [PTS645TL43 LFS](#) [PTS645VH15 LFS](#)
[PTS645VH83 LFS](#) [PTS645SK50TR LFS](#) [PTS645SL70TR LFS](#) [PTS645SM50TR LFS](#) [PTS645SH95 LFS](#)
[PTS645SK43 LFS](#) [PTS645TL70 LFS](#) [PTS645SL70 LFS](#) [PTS645VH39 LFS](#) [PTS645TL50 LFS](#) [PTS645SH50 LFS](#)
[PTS645VL15 LFS](#) [PTS645SK50 LFS](#) [PTS645TH50 LFS](#) [PTS645VH31 LFS](#) [PTS645SK43TR LFS](#)
[PTS645SL50SMTR LFS](#) [PTS645SJH73 LFS](#) [PTS645TH43 LFS](#) [PTS645SL43 LFS](#) [PTS645SH43SMTR LFS](#)
[PTS645SK95 LFS](#) [PTS645SL95 LFS](#) [PTS645VJL61 LFS](#) [PTS645VK39 LFS](#) [PTS645SL17LFS](#) [PTS645SM43LFS](#)
[PTS645SM50LFS](#) [PTS645SM70LFS](#) [PTS645SM95LFS](#) [PTS645SH43LFS](#) [PTS645SK70LFS](#) [PTS645VM15LFS](#)
[PTS645VM31LFS](#) [PTS645VM39LFS](#) [PTS645VM58LFS](#) [PTS645VM83LFS](#) [PTS645VK15LFS](#) [PTS645VK31LFS](#)
[PTS645VK58LFS](#) [PTS645VK83LFS](#) [PTS645SM50SMTRLFS](#) [PTS645SH50SMTRLFS](#) [PTS645SK43SMTRLFS](#)
[PTS645SK50SMTRLFS](#) [PTS645VJM61LFS](#) [PTS645VJH61LFS](#) [PTS645VJK61LFS](#) [PTS645SK50-2 LFS](#)
[PTS645SM43-2 LFS](#) [PTS645VK31-2 LFS](#) [PTS645VM58-2 LFS](#) [PTS645SL95-2 LFS](#) [PTS645VH83-2 LFS](#)
[PTS645SL50SMTR 92 LFS](#) [PTS645VH31-2 LFS](#) [PTS645VK83-2 LFS](#) [PTS645SH43-2 LFS](#) [PTS645SH43SMTR 92](#)
[LFS](#)