

product: DELPHI PN 15446415
 material: CUNI3SI1MG
 surface: F.SN 3
 material thickness: 0,25 mm
 cross section [mm²]: 0,5 + 0,75

 strip length: 4,10 mm
 cable type: FLRY-B + T3ZHID
 insulation \varnothing [mm]:
 seal:

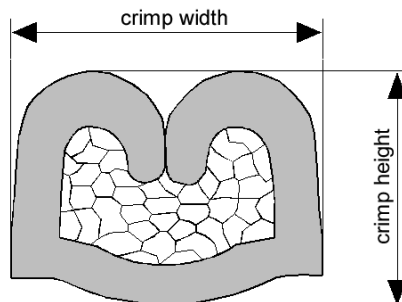
**Uncontrolled
Copy**
For Information only!

conductor dimension					crimp dimension [mm]				
cable arr.	cable type	cross sect. [mm ²]	struct. n x d [mm]	tear-out force [N]	core		insulation		
					height $\pm 0,05$	width $\pm 0,10$	height $\pm 0,10$	width $\pm 0,10$	
top	FLRY-B + T3ZHID	0,5 + 0,75	16 x 0,21 + 19 x 0,23	80	1,30	2,20	2,70	3,50	core: C-2.15-3.0-8 DPN 10713723 insulation: IS-3.50-3.0-12 DPN 10804761 anvil: two piece anvil: AC-2.15-3.25 DPN 10764130 AI-3.50-3.0-0.3-A DPN 10805328

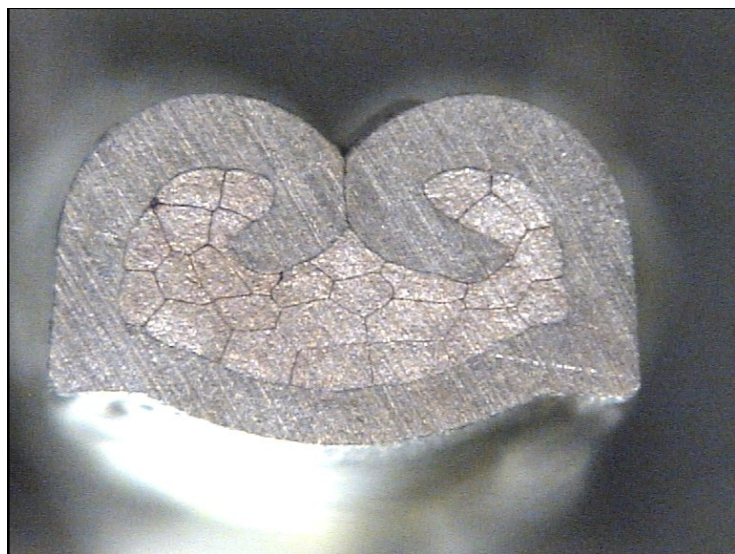
The tear-out force is validated for the small cable.

Notice to cable arrangement:

side: cables side by side
 top: one cable on top of the other
 n. d.: not defined



DELPHI PN 15446415



cable:

$0,50 \text{ mm}^2 + 0,75 \text{ mm}^2 =$
 $16 \times 0,21 \text{ mm} + 19 \times 0,23 \text{ mm}$

crimp height:

1,30 mm

crimp width:

2,20 mm