

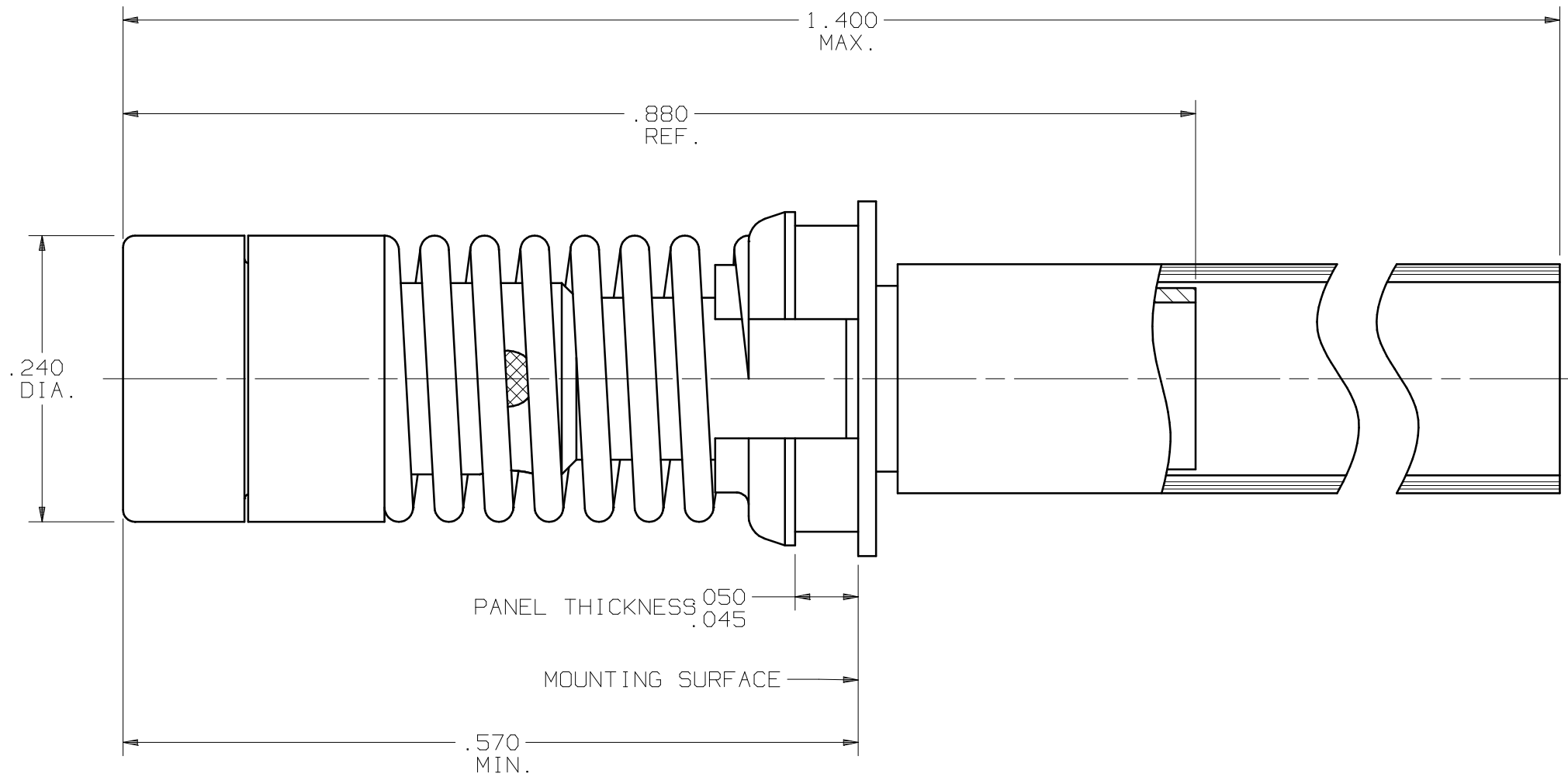
PRODUCT DATA DRAWING

CAD
GENERATED
DRAWING

DCN
CONTROLLED
DOCUMENT

DWG. NO.

1421-6001



MATERIALS:

BODY &
INSERT: STAINLESS STEEL PER AMS-5640,
UNS 530300, TYPE I

CONTACT,
SPRING CLIP,
CONTACT SLEEVE: BERYLLIUM COPPER PER ASTM-196,
COND. TD04, ALLOY UNS-C17300

SHIM SPRING: BERYLLIUM COPPER PER ASTM-B-194,
COND. TD04, ALLOY UNS-C17200

INSULATOR: TEFLON PER ASTM-D-1710

COIL SPRING: MUSIC WIRE PER ASTM A228

E-RING: STAINLESS STEEL PER ASTM-A-240,
ALLOY UNS S30400, TYPE 304.

CRIMP RING
PIN CONTACT: BRASS PER ASTM B16, ALLOY UNS C36000

SHRINK TUBING: POLYOLEFIN PER MIL-I-23053/4-102-0

FINISHES:

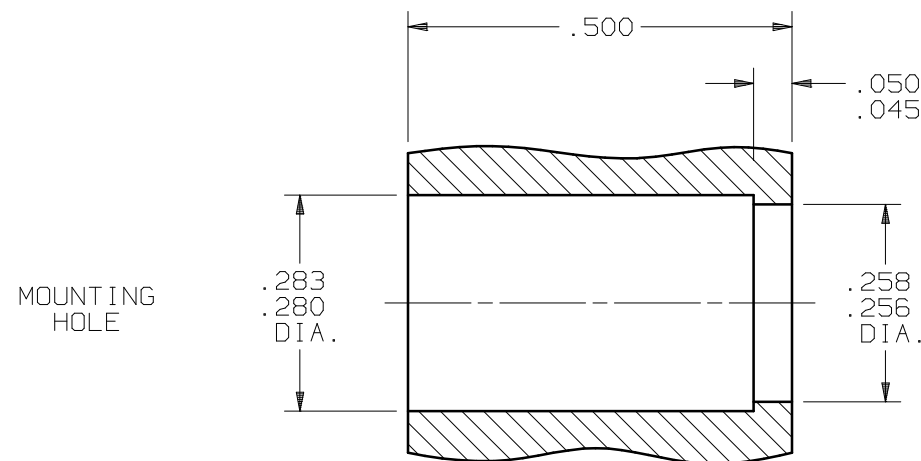
BODY,
INSERT,
CONTACT,
CRIMP RING,
SPRING CLIP,
CONTACT SLEEVE,
SHIM SPRING &
OUTER CONTACT: GOLD PER MIL-G-45204, TYPE I
GRADE C, CLASS 0 OVER NICKEL
PER QQ-N-290, CLASS 1

COIL SPRING: ZINC OR CADMIUM PLATED PER VENDOR

E-RING: PASSIVATE PER QQ-P-35C TYPE II

ELECTRICAL:

IMPEDANCE: 50 OHMS
FREQ. RANGE: DC TO 3 GHz
D.W.V.: 750 VRMS
INSUL. RES.: 5,000 MEGOHMS MIN.
VSWR: 1.20 + .025f(GHz)



SYM.	DESCRIPTION	DATE	APPR.	UNLESS OTHERWISE SPECIFIED: 1) ALL DIMENSIONS ARE AFTER PLATING. 2) BREAK CORNERS & EDGES .005 R. MAX. 3) CHAM. 1st & LAST THDS. 4) SURFACE ROUGHNESS 63 J MIL-STD-10. 5) DIAS. ON COMMON CENTERS TO BE CONCENTRIC WITHIN .005 T.I.R. 6) REMOVE ALL BURRS.	DIMENSIONS ARE IN INCHES TOLERANCES:			SV Microwave, Inc. 2400 Centrepark West Drive, Suite 100 West Palm Beach, FL 33409
				DECIMALS .X ±.030 .XX ±.015 .XXX ±.005	FRACTIONAL ±1/64	ANGULAR X° ±1°0' X°X' ±15'	TITLE: BMMA JACK FLOAT MOUNTED FRO RG-316 CABLE	
-	REL. NRN 28991	10/02	STW		MATERIAL: N/A	□" AREA: N/A	DWG. NO. 1421-6001	
				DRAWN: VMJ 10/10/02	FINISH: PER BOM	SCALE 8X		
				CHECKED: STW 10/11/02	SIZE B	CAGE NO. 95077		
				APPROVED: STW 10/11/02				