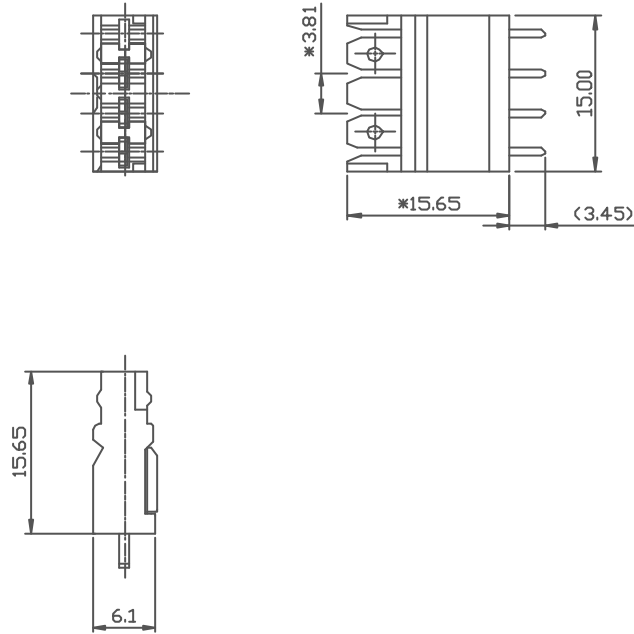
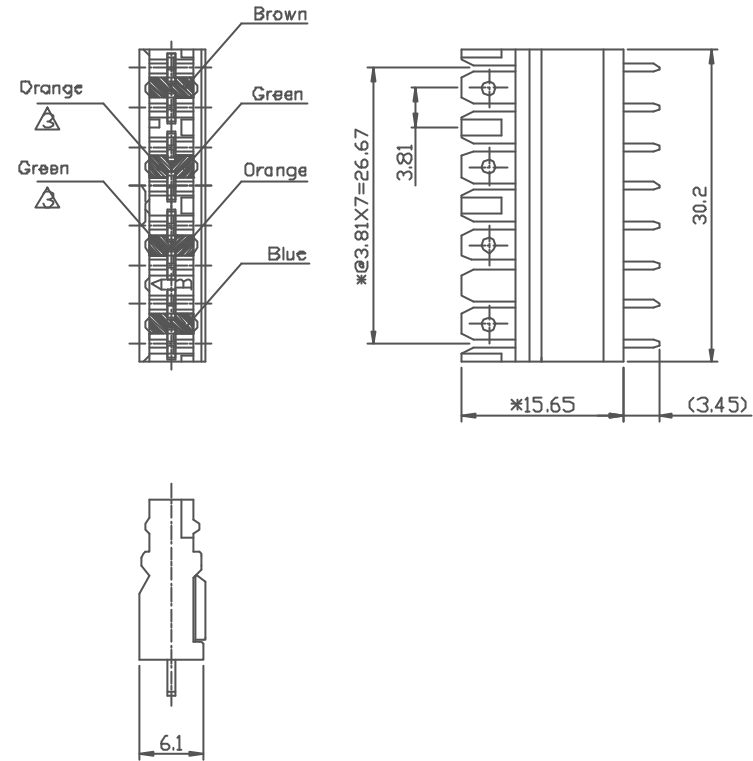


REVISION RECORD				
REV	ECD	DESCRIPTION	DRFT	CHKD
△		PART NO. MODIFY	VLD	
△		DRAWING MODIFY	4/1/02	
△		DRAWING MODIFY	4/24/02	
△		DRAWING MODIFY	JDA	
△		DRAWING MODIFY	4/24/02	
△		DRAWING MODIFY	LVL	
△		DRAWING MODIFY	11/26/02	

4 POSITION



8 POSITION



NOTE:  
 HOUSING: PC UL94V-0  
 CONTACT: PHOSPHOR BRONZE WITH SILVER PLATING  
 OPTION : PHOSPHOR BRONZE WITH TIN PLATING  
 WIRE : CABLE SIZE ;  
 SOLID COPPER WIRES UP TO 0.4mm - 0.8mm IN DIA.  
 CONTACT RESISTANCE : 15 MILLIOHMS MAX.  
 VOLTAGE RATING : 250 VDC  
 OPERATING TEMPERATURE: -20°C TO +80°C AND HUMIDITY UP TO 95%  
 INSULATION RESISTANCE : 500 VDC, VOLTAGE APPLIED 1000 MEGOHMS MIN.  
 DIELECTRIC STRENGTH : AC 1000 VRMS  
 PART NUMBER: △ E48XX-300X1X

- 04-4 POSITION
- 05-5 POSITION
- 08-8 POSITION
- 10-10 POSITION
- A-TIN
- F-SILVER
- 3-IDC W/O PRINT
- 4-IDC PRINT(BROWN, GREEN, ORANGE, BLUE)
- &W/AB

DETACHED LISTS	MM	DFTD BASS	DATE 5/18/99	FULL RISE ELECTRONIC CO., LTD		
	ORDD	CHKD ZLJ	DATE 2002/11/27			
	TOLERANCES EXCEPT AS NOTED		MFD	DATE	TITLE  110 IDC	
			APPVL SHY	DATE 2002/11/27		
MN	±			DRAWING NO. GE483002 /PART NO. SEE NOTE		
.0 ± 0.2	±					
.00 ± 0.15	±			SIZE A3 REV 2/26/02 4		
.001 ± 0.075	±					
ANGLES ± 0.5		QT'Y :		DO NOT SCALE DRAWING		
THIRD ANGLE PROJECTION		FINISH		SHEET GF		
		SCALE : 2 : 1				