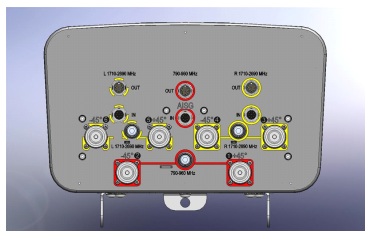


CVVPX306R3



6-port sector antenna, 2x 790–960 and 4x 1710–2690 MHz, 65° HPBW, 3x RET with manual override

OBSOLETE

This product was discontinued on: June 1, 2017

Replaced By

RVV65A-M
RVV65A-3X2

6-port sector antenna, 2x 694–960 and 4x 1695–2690 MHz, 65° HPBW, RET compatible

Electrical Specifications

Frequency Band, MHz	790–890	890–960	1710–1920	1920–2180	2300–2690
Gain, dBi	14.5	14.8	14.7	15.3	15.7
Beamwidth, Horizontal, degrees	66	65	61	60	62
Beamwidth, Vertical, degrees	14.9	13.8	13.7	12.3	9.7
Beam Tilt, degrees	0–10	0–10	0–10	0–10	0–10
USLS (First Lobe), dB	18	18	18	18	16
Front-to-Back Ratio at 180°, dB	28	26	29	36	33
Isolation, Cross Polarization, dB	25	25	25	25	25
Isolation, Inter-band, dB	30	30	30	30	30
VSWR Return Loss, dB	1.43 15.0	1.43 15.0	1.5 14.0	1.5 14.0	1.5 14.0
PIM, 3rd Order, 2 x 20 W, dBc	-150	-150	-150	-150	-150
Input Power per Port, maximum, watts	300	300	250	250	250
Polarization	±45°	±45°	±45°	±45°	±45°
Impedance	50 ohm	50 ohm	50 ohm	50 ohm	50 ohm

Electrical Specifications, BASTA*

Frequency Band, MHz	790–890	890–960	1710–1920	1920–2180	2300–2690
Gain by all Beam Tilts, average, dBi	14.3	14.6	14.5	14.8	15.3
Gain by all Beam Tilts Tolerance, dB	±0.4	±0.2	±0.3	±0.5	±0.5
Gain by Beam Tilt, average, dBi	0 ° 14.3 5 ° 14.3 10 ° 14.2	0 ° 14.7 5 ° 14.7 10 ° 14.6	0 ° 14.5 5 ° 14.5 10 ° 14.4	0 ° 14.8 5 ° 14.8 10 ° 14.8	0 ° 15.5 5 ° 15.4 10 ° 15.1
Beamwidth, Horizontal Tolerance, degrees	±1.2	±1.2	±2.3	±2.2	±6.3
Beamwidth, Vertical Tolerance, degrees	±0.7	±0.4	±0.8	±1.1	±1
USLS, beampeak to 20° above beampeak, dB	18	18	18	18	16
Front-to-Back Total Power at 180° ± 30°, dB	25	25	23	26	27
CPR at Boresight, dB	17	14	20	20	18

General Specifications

Operating Frequency Band	1710 – 2690 MHz 790 – 960 MHz
Antenna Type	Sector
Band	Multiband
Performance Note	Outdoor usage

Mechanical Specifications

RF Connector Quantity, total	6
RF Connector Quantity, low band	2
RF Connector Quantity, high band	4
RF Connector Interface	7-16 DIN Female
Grounding Type	RF connector inner conductor and body grounded to reflector and mounting bracket
Radiator Material	Brass Low loss circuit board
Radome Material	ASA, UV stabilized
Reflector Material	Aluminum
RF Connector Location	Bottom
Wind Loading, frontal	661.0 N @ 150 km/h 148.6 lbf @ 150 km/h
Wind Loading, lateral	257.0 N @ 150 km/h 57.8 lbf @ 150 km/h
Wind Speed, maximum	250 km/h 155 mph

Dimensions

Length	1560.0 mm 61.4 in
Width	353.0 mm 13.9 in
Depth	209.0 mm 8.2 in
Net Weight, without mounting kit	20.0 kg 44.1 lb

Remote Electrical Tilt (RET) Information

Input Voltage	10–30 Vdc
Internal RET	High band (2) Low band (1)
Power Consumption, idle state, maximum	2 W
Power Consumption, normal conditions, maximum	13 W
Protocol	3GPP/AISG 2.0 (Single RET)
RET Interface	8-pin DIN Female 8-pin DIN Male
RET Interface, quantity	3 female 3 male

CVVPX306R3

Packed Dimensions

Length	1745.0 mm 68.7 in
Width	427.0 mm 16.8 in
Depth	325.0 mm 12.8 in
Shipping Weight	25.0 kg 55.1 lb

Regulatory Compliance/Certifications

Agency	Classification
ISO 9001:2015	Designed, manufactured and/or distributed under this quality management system



Included Products

T-041-GL-E — Adjustable Tilt Pipe Mounting Kit for 2.0"-4.5" (60-115mm) OD round members for panel antennas. Includes 2 clamp sets.

* Footnotes

Performance Note	Severe environmental conditions may degrade optimum performance
-------------------------	---