

STRAIGHT PLUGS

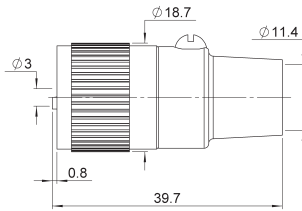


Fig. 1

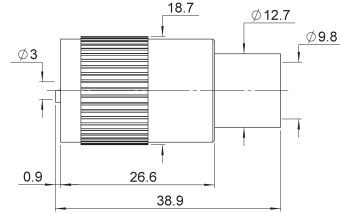


Fig. 2

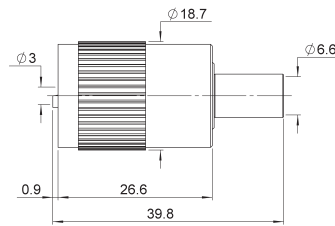


Fig. 3

Cable group	Cable group dia.	Part number	Fig	Note
RG59/RG62	6/75Ω	R155 074 000	3	Crimp type - Insulator: PTFE
RG213/RG393/RG11/RG12/RG144	10/50+75Ω	R155 003 000	1	Insulator: PTFE
		R155 005 000	2	Insulator: PTFE

RECEPTACLES

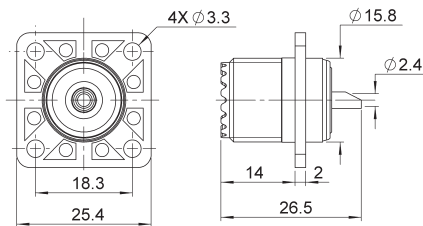


Fig. 1

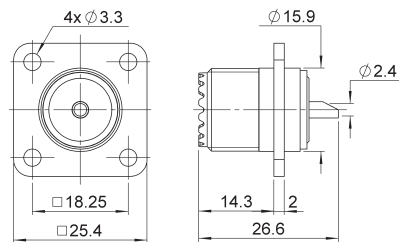


Fig. 2

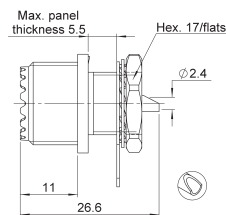


Fig. 3

Part number	Fig	Panel drilling	Note
R155 404 161	1	P01	Square flange - Solder pot - Insulator: Bakelite
R155 405 000	2	P01	Square flange - Solder pot - Insulator: PTFE
R155 560 000	3	P02	Bulkhead - Solder pot - Insulator: PTFE

To download data sheets and assembly instructions, visit www.radiall.com & enter the part number in the Search box.
Bold part numbers represent products typically in stock & available for immediate shipment.
 See page 8 and 9 for packaging information.