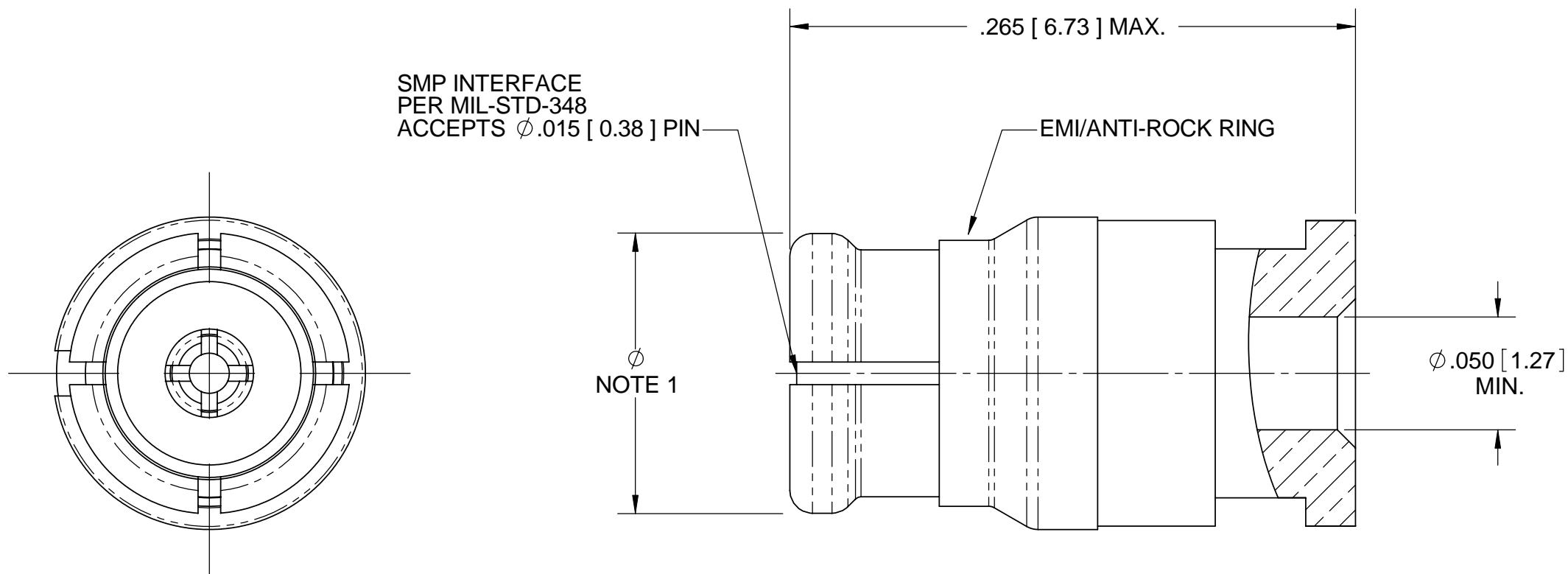


PRODUCT DATA DRAWING

REVISION HISTORY			
REV	DESCRIPTION	DATE	APPROVED
A	REL. NRN 32069	09/13/04	STW
B	REV. DCN 35434	10/05/07	STW

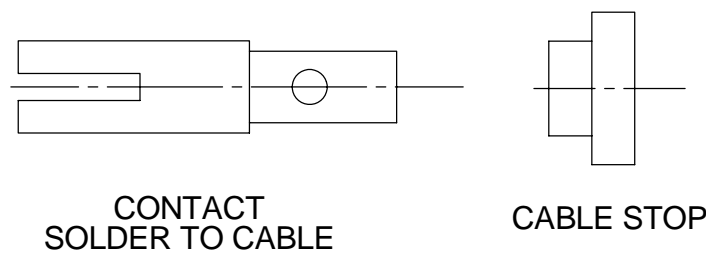


MATERIALS:
 BODY, CONTACT, EMI/ANTI-ROCK RING: BERYLLIUM COPPER PER ASTM B196
 INSULATOR: PTFE PER ASTM D1710
 CABLE STOP: TORLON

FINISHES:
 BODY, CONTACT, EMI/ANTI-ROCK RING: GOLD PER ASTM B488, TYPE II GRADE C, CLASS 1.27, OVER NICKEL PER ASM-QQ-N-290, CLASS 1

ELECTRICAL:
 IMPEDANCE: 50 OHMS
 FREQ. RANGE: DC TO 40 GHZ
 D.W.V.: 500 VOLTS DC
 INSULATION RES.: 5,000 MEGOHMS MINIMUM

REF. DSCC 94008ZCG-2



DIMENSIONS ARE IN INCHES WITH METRIC EQUIVALENTS IN BRACKETS []

MATERIAL:	DIMENSIONS ARE IN INCHES TOLERANCES:	UNLESS OTHERWISE SPECIFIED	SV Microwave, Inc. 2400 Centrepark West Drive, Suite 100 West Palm Beach, FL 33409 TITLE: SMP CABLE JACK FOR Ø .047 S.R. CABLE
FINISH: PER BOM	FRACTIONAL: ±1/64 ANGULAR: X° ±1'0" X°X' ±15'	1) ALL DIMENSIONS ARE AFTER PLATING. 2) BREAK CORNERS & EDGES .005 R. MAX. 3) CHAM. 1ST & LAST THREADS. 4) SURFACE ROUGHNESS 63 √ MIL-STD-10. 5) DIA.'S ON COMMON CENTERS TO BE CONCENTRIC WITHIN .005 T.I.R. 6) REMOVE ALL BURRS	
SURFACE AREA:	DECIMAL: .X ±.030 .XX ±.010 .XXX ±.005	INTERPRET DIMENSIONS AND TOLERANCES PER ASME Y14.5M - 1994	DRAWN: JMC 04/16/04 CHECKED: STW 09/13/04 APPROVED: STW 09/13/04 E.M. SIMULATION: SVG 05/03/04
PROPRIETARY THE INFORMATION CONTAINED IN THIS DRAWING IS THE SOLE PROPERTY OF SV MICROWAVE, INC. ANY REPRODUCTION IN PART OR AS A WHOLE WITHOUT THE WRITTEN PERMISSION OF SV MICROWAVE, INC IS PROHIBITED.	THIRD ANGLE PROJECTION 	SIZE: B CAGE CODE: 95077 DWG. NO.: 1203-4000 SCALE: 1:0.2	SHEET 1 OF 1