

PANDUIT® Copper Single & Dual Barrel Lugs (Types CB, DC, & CO)

Copper Lugs

For Use With Copper Cables Only

Single Barrel Lug Type CB

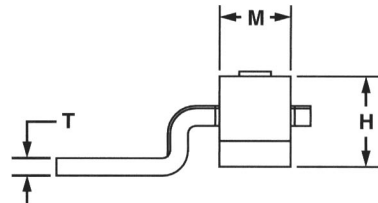
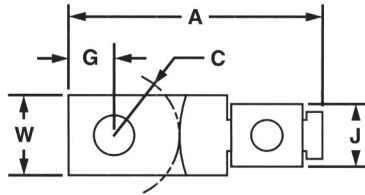
One-Hole Offset Tongue



Part Number	Copper Conductor Size Range	Current Rating (Amps)	Bolt Hole Size	Hex Key Size	Dimensions (In.)								Std. Pkg. Qty.
					A	W	G	C	T	M	H	J	
CB25-18-C	#14-#10	25	1/8"	**	1.00	.32	.19	.28	.07	.28	.36	.25	100
CB35-36-C	#14-#6*	50	3/16"	**	1.19	.38	.23	.25	.07	.43	.50	.33	100
CBA70-14-C	#14-#4*	70	1/4"	**	1.31	.50	.25	.28	.08	.43	.56	.38	100
CB70-14-C	#12-#1	90	1/4"	**	1.55	.50	.25	.34	.09	.50	.65	.47	100
CB125-14-Q	#2-#1/0	125	1/4"	**	1.97	.63	.50	.28	.13	.63	.88	.62	25
CB175-38-Q	#4-#3/0	175	3/8"	5/16"	2.19	.75	.44	.50	.16	.75	1.03	.71	25
CB225-56-Q	#6-#4/0	225	5/16"	5/8"	2.38	1.00	.47	.56	.13	1.00	1.17	.75	25
CB300-38-Q	#1-350	300	3/8"	3/4"	3.16	1.00	.50	.94	.19	1.23	1.39	1.00	25
CB400-38-3	#1/0-500	400	3/8"	3/4"	4.25	1.50	.88	1.00	.19	1.50	1.57	1.16	3
CB650-12-3	600-1000	650	1/2"	1-1/8"	4.63	2.00	1.16	.69	.25	1.88	2.34	1.68	3

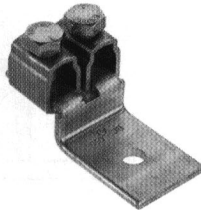
*And combinations

**Uses Slotted Head Set Screw

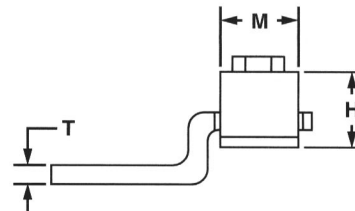
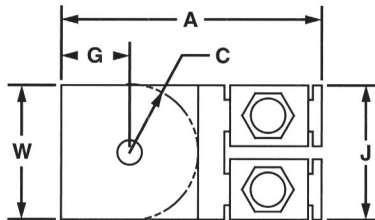


Dual Barrel Lug Type DC

One-Hole Offset Tongue



Part Number	Copper Conductor Size Range	Current Ratings (Amps)	Bolt Hole Size	Hex Key Size	Dimensions (In.)								Std. Pkg. Qty.
					A	W	G	C	T	M	H	J	
DC450-38-3	#6-4/0	450	3/8"	5/8"	3.40	1.50	.94	1.00	.19	1.00	1.13	1.58	3
DC600-38-3	#1-350	600	3/8"	3/4"	3.50	1.75	.63	1.13	.19	1.23	1.39	2.08	3
DC800-12-3	#1/0-500	800	1/2"	3/4"	4.43	2.00	.84	1.25	.25	1.50	1.13	2.36	3



Single Barrel Lug Type CO

Two-Hole Offset Tongue



Part Number	Copper Conductor Size Range	Current Rating (Amps)	Bolt Hole Size	Hex Key Size	Dimensions (In.)								Std. Pkg. Qty.	
					A	W	G	S	C	T	M	H		J
CO35-36-Q	#14-#6*	50	3/16"	**	2.19	.38	.22	1.00	.25	.07	.44	.50	.38	25
CO70-14-Q	#12-#1*	90	1/4"	**	2.50	.50	.25	1.00	.56	.09	.50	.65	.50	25
CO125-14-Q	#2-#1/0	125	1/4"	**	2.97	.63	.44	1.00	.41	.13	.63	.88	.63	25
CO225-56-Q	#6-#4/0	225	5/16"	5/8"	3.62	1.00	.50	1.00	.75	.13	1.00	1.12	1.00	25
CO300-38-3	#1-350	300	3/8"	3/4"	5.69	1.00	.81	1.87	1.25	.19	1.23	1.39	1.00	3
CO400-38-3	#1/0-500	400	3/8"	3/4"	6.00	1.50	.94	1.75	1.06	.19	1.53	1.56	1.50	3
CO650-12-3	600-1000	650	1/2"	1-1/8"	6.25	2.00	1.19	1.75	.69	.25	1.88	2.34	2.00	3

*And combinations

**Uses Slotted Head Set Screw

◆ NEMA hole sizes and spacing

