

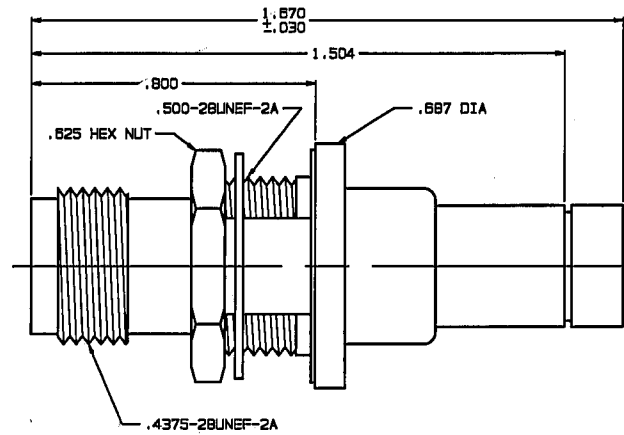
RED INDICATES ORIGINAL

DWG SIZE C	REVISIONS				3-0299	SH 1
	REV	ED	DESCRIPTION	DWN	APPROVED	DATE
	A		PRODUCTION RELEASE			

TABLE 2 A		
MILITARY PART NO (PIN)	MILITARY CABLE PART NO	TROMPETER PART NO (REF. DLY.) A
M49142/09-0018	M17/45-RG108	MBJ379MC-213
M49142/09-0017	M17/178-00002	MBJ379MC-201

TABLE 1		ASSEMBLE PER
DASH NO	CABLES ACCOMMODATED	
-201	M17/178-00002	TAI-206
-202	TWC-78-1	
-203	TWC-124-1A	
-204	1D602, RAYCHEM	
-205	TWAC-78-1F2	
-206	7B2600130, RAYCHEM	
-207	B3310, BELDEN	
-208	202-3927, MICRODOT	
-209	202-3942, MICRODOT	
-210	B451, BELDEN	
-211	202-3934, MICRODOT	
-212	2524E0114, RAYCHEM	
-213	TWC-78-2	
-214	TWC-124-2	
-215	BL982, TIMES	
-216	BL1242, TIMES	
-217	GC875TM24H, GRUMMAN	
-218	EDP22188B, RAYCHEM	
-219	2526D1114, RAYCHEM	
-220	GC875RR1, GRUMMAN	
-221	10614, RAYCHEM	
-222	10613, RAYCHEM	
-223	HMS2-1149, HUGHES	
-224	TWCP-124-3	
-225	PS665PL, PRIME STOCK	

INCH	MM
.005	0.13
.030	0.76
.109	2.77
.218	5.54
.221	5.61
.296	7.52
.505	12.83
.510	12.95
.625	15.88
.687	17.45
.800	20.32
1.504	38.20
1.670	42.42

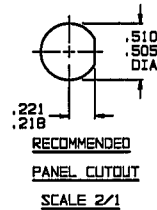


- A** WHEN CONNECTOR IS SUPPLIED TO MILITARY PART NO (SEE TABLE 2):
- ALL PARTS NORMALLY PLATED TFS-1A OR TFS-1U (NICKEL) ARE TO BE PLATED TFS-1M (SILVER)
 - MARK PART WITH MILITARY PIN (SEE TABLE 2) AND *14949*
 - QUALITY CONFORMANCE INSPECTION SHALL BE PER MIL-C-49142 SECTION 4.5

5. EXAMPLE OF COMPLETE MODEL NO:
BJ379MC - 201

BASIC MODEL NO. CABLE GROUP
DASH NO
(SEE TABLE 1)

- MAX PANEL THK .109
- CONCENTRIC TWINAX THREADED TRT, MILITARY FULL CRIMP CABLE RECEPTACLE
- FINISH: TFS-1A (NICKEL) **A**
- ALL DIMENSIONS ARE IN INCHES



QTY	DESCRIPTION	PART NUMBER	ITEM
	TIL UNLESS SPECIFIED .XX ± .XXX ±.005 .XXXX UNLESS	TROMPETER ELECTRONICS, INC.	BJ379MC
DWN	TCS 12/4/85	MATERIAL	CODE IDENT
CHK	BM 12/14/85	14949	3-0299
ENGR	[Signature]	A	REV
APPR	[Signature]	SCALE 4/1	DATE 12/15/85 SHEET 1C