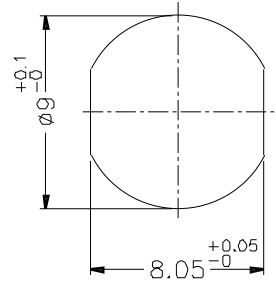
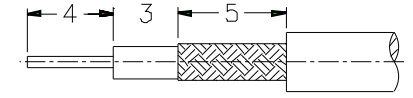


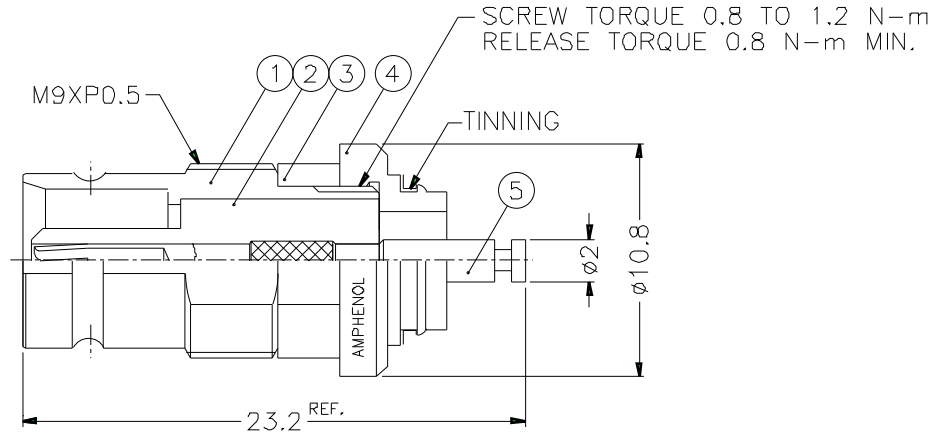
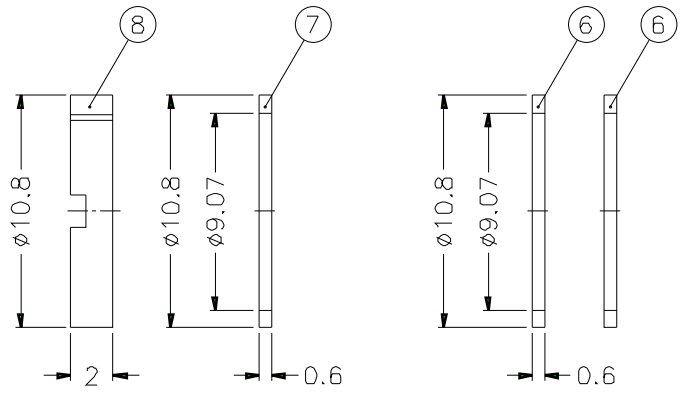
ISS		ZONE		REVISIONS		
				DESCRIPTION	PER REQUEST	DATE



RECOMMENDED MOUNTING HOLE



RECOMMENDED CABLE STRIPPING DIM'S



SCREW TORQUE 0.8 TO 1.2 N-m  
RELEASE TORQUE 0.8 N-m MIN.

PANEL THICKNESS:  
1. 1.2mm(GROUNDED OR ISOLATED)  
2. 3mm(ONLY GROUNDED, WITHOUT WASHERS  
⑥ AND ⑦)

-ACCESSORY ACCORDING TO 5C 713 00  
-CONNECTOR ACCORDING TO NF C 93-570, UTEC 93-570  
-PACKAGING IN BAG WITH COMMERCIAL PART NUMBER AND DATE CODE

8	NUT	BRASS	NICKEL	1	
7	WASHER	BRASS	NICKEL	1	
6	ISOLATING WASHER	EPOXY GLASS -FR4 TYPE	NATURAL	2	
5	CONTACT PIN	BEUCU	GOLD	1	
4	BARREL	BRASS	NICKEL	1	
3	RING	PSU,20% G.F.	GREEN	1	
2	INSULATOR	TEFLON	NATURAL	1	
1	BODY	BRASS	GOLD	1	
NO.	DESCRIPTION	MATERIAL	FINISH	Q'TY	DRAWING NO.

DIMENSIONS ARE IN MILLIMETERS

PART NO.	156 287 05
APPROVED	DATE 10-11-01'
CHECKED	DATE 10-11-01'
DRAWN	DATE 10-11-01'
FILE NO.	

<b>Amphenol</b>	
TITLE 1.6/5.6 75Ω BULKHEAD MOUNT JACK	
DRAWING NO.	
ITEM NO.	