



Model 1935W Coaxial DFB Laser Diode

O-Band CWDM, Wide Bandwidth 900MHz – 4000MHz

Emcore's Model 1935W DFB lasers offer a low cost solution for linear fiberoptic links. These components can be cooled with external thermoelectric coolers for high stability, or run without TEC's to reduce power consumption. The DFB laser builds upon Emcore's long history of high performance, leading edge designs in CATV, wireless, and high speed digital applications. The laser diode devices are packaged in a compact hermetic assembly together with monitor photodiode and isolator, for flexible integration into various transmitter configurations.

Applications

- Signal distribution in L-band and wireless remoting links
- High linearity, low power fiber links

Features

- Linear DFB laser design
- Output power up to 10 dBm available
- 4GHz Bandwidth
- RoHS compliant
- Optical Isolator
- Low power consumption
- Monitor photodiode

Performance Highlights

	Min	Typical	Max	Units
Operating Case Temperature Range	-20	-	45	°C
Minimum Optical Output Power	3	-	5.8	dBm
	6	-	8.8	
	9	-	9.8	
	10	-	11.8	
Frequency Range	900	-	4000	MHz
Input Third Order Intercept Point	30	-	-	dB
1dB Compression Point	16	-	-	dB
O-Band CWDM Wavelength	1271, 1291, 1311, 1331, 1351, 1371			nm
Optical Return Loss	35	-	-	dB
Side Mode Suppression Ratio, CW	30	-	-	dB

See following pages for complete specifications and conditions.

Absolute Maximum Ratings¹

Stresses in excess of the absolute maximum ratings can cause permanent damage to the device. These are absolute stress ratings only. Functional operation of the device is not implied at these or any other conditions in excess of those given in the operational sections of the data sheet. Exposure to absolute maximum ratings for extended periods can adversely affect device reliability.

Parameters	Symbol	Condition/Notes	MIN	MAX	Unit
Storage Temperature	T _{STG}	Non-Operating	-40	85	°C
Operating Case Temperature	T _{OP}	Continuous	-40	80	°C
Laser Diode Forward Current	I _{OP}	CW	-	100	mA
Laser Diode Reverse Voltage	V _R	Continuous	-	1.0	V
Photodiode Forward Current	I _{MPD}	Continuous	-	2	mA
Photodiode Reverse Voltage	V _{MPD,R}	Continuous	-	10	V
Average RF Input Power	PIN	60 Seconds	-	62	dBmV
Lead Soldering Temperature/Time	-	-	-	260/10	°C/sec
Relative Humidity	RH	Continuous	-	85	%
ESD	-	Human Body Model	-500	+500	V

1. Absolute maximum data are limited to system design only; proper device performance is not guaranteed over rating listed above. Operation beyond these maximum conditions may degrade device performance, lead to device failure, shorter lifetime, and will invalidate the device warranty.

Electrical/Optical Characteristics

Parameters	Symbol	Conditions/Notes	Min	Typ	Max	Unit
Minimum Optical Output Power	P_O	3 dBm version 6 dBm version 9 dBm version 10 dBm version	3 6 9 10	- - - -	5.8 8.8 9.8 11.8	dBm
Threshold Current	I_{TH}	$T_{case} = 25^{\circ}C$ $T_{case} = 45^{\circ}C$	- -	8 13	15 20	mA
Laser Bias Current	T_{OP}	$T_{case} = 25^{\circ}C$	-	-	80	mA
Forward Voltage	V_F	I_{op}	-	1.65	1.8	V
Laser Input Impedance	Z	-	2	5.5	8	Ω
MPD Current	I_{MPD}	$V_{MPD} = 5V, I_{op} = 40 mA$	200	-	2000	μA
MPD Dark Current	I_D	$V_{MPD} = 5V, I_{op} = 0$ $T_{case} = 25^{\circ}C$	-	-	50	nA
O-Band CWDM Center Wavelength	λ_c	I_{op} $T_{case} = 25^{\circ}C$	1267	1271	1275	nm
			1287	1291	1295	
			1307	1311	1315	
			1327	1331	1335	
			1347	1351	1355	
			1367	1371	1375	
Relative Intensity Noise	RIN	CW, I_{op} , $50 MHz < f < 550 MHz$	-	-	-150	dB/Hz
Optical Isolation	ISO	$T_{case} = 25^{\circ}C$	30	-	-	dB
Spectral Width (-20 dB)	$\Delta\lambda$	$I_{op}, T_{case} = 25^{\circ}C$	-	0.1	1.0	nm
Side Mode Suppression Ratio	SMSR	$I_{op}, T_{case} = 25^{\circ}C$	30	45	-	dB
Tracking Error	ER	$I_{MON} = const$ $ER = 10\log(P_O/2.0)$ [dB]	-1	-	+1	dB
Optical Return Loss	ORL	$T_{case} = 25^{\circ}C$	35	-	-	dB

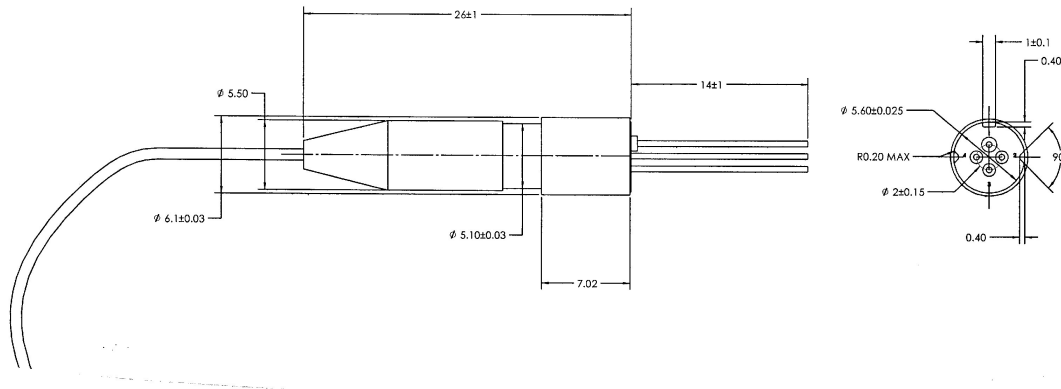
1. Referenced to base of TO header.

RF Characteristics

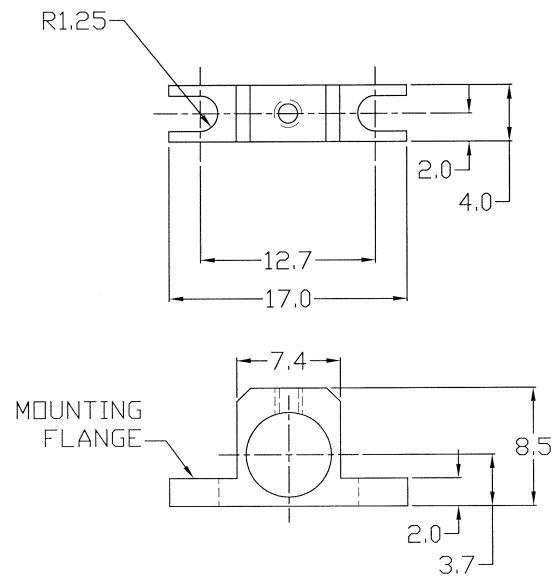
Parameters	Symbol	Conditions/Notes	Min	Typ	Max	Unit
Bandwidth _{3 dB}	BW	$I_{op}, T_{case} = 25^{\circ}C$	4000	-	-	MHz
Frequency Response Flatness ¹	$ S_{21} $	900 MHz – 4000 MHz	-	-	4	dB _{p-p}
Input Third Order Intercept ^{1,2}	IIP3	Standard Linearity, I_{bb}	30	-	-	dB
1dB Compression Point ^{1,3}	P_{1dB}	$I_{bb}, T_{case} = 25^{\circ}C$	16	-	-	dBm

- $I_{op}, T_{case} = 25^{\circ}C$. Test with the laser Input pin matched to a 50 Ω system.
- IIP3 is measured at I_{bb} where I_{bb} is the bias point at which simultaneously the laser at its best linearity and the optical power is within specification. Test Frequency F1 = 2700MHz, F2 = 2703MHz, RF in = 0dBm/frequency. 0km fiber.
- Test at 2700MHz. 0km fiber.

Package Outline Drawing



Mounting Bracket



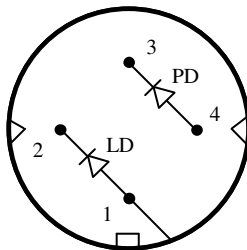
Model 1935W O-Band CWDM Coaxial DFB Wide Bandwidth Laser Diode

DATASHEET | JULY 7, 2008

Reliability/Quality

Designed to meet qualification requirements of Telcordia™ (Bellcore) GR-468-CORE.

Schematic and Pinout



Pin Definitions

Pin	Description
1	LD Anode, Case Ground
2	LD Cathode
3	PD Cathode
4	PD Anode

Laser Safety

This product meets the appropriate standard in Title 21 of the Code of Federal Regulations (CFR). FDA/CDRH Class IIIb laser product. This device has been classified with the FDA/CDRH under accession number TBD.

Single-mode fiber pigtail with SC/APC connectors (standard).

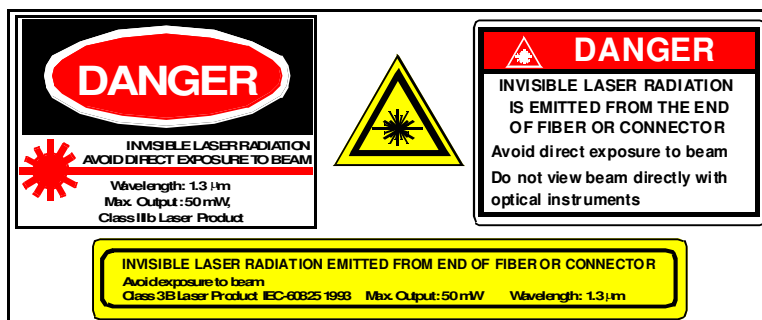
Wavelength = 1.3 μm .

Maximum power = 50 mW.

Because of size constraints, laser safety labeling (including an FDA class IIIb label) is not affixed to the module, but attached to the outside of the shipping carton.

Product is not shipped with power supply.

Caution: Use of controls, adjustments and procedures other than those specified herein may result in hazardous laser radiation exposure.



Model 1935W O-Band CWDM Coaxial DFB Wide Bandwidth Laser Diode

DATASHEET | JULY 7, 2008

Ordering Code Definitions

1935	-	a	-	bbbb	-	xx	-	yy	-	z
------	---	---	---	------	---	----	---	----	---	---

Family Name

1935W: Wide Bandwidth

Distortion Performance

a = A: Standard Linearity
a = B: Enhanced Linearity

O-Band Wavelength

bbbb = 1271: 1271 nm
bbbb = 1291: 1291 nm
bbbb = 1311: 1311 nm
bbbb = 1331: 1331 nm
bbbb = 1351: 1351 nm
bbbb = 1371: 1371 nm

Fiber Length, Optical Connector

xx = FA: FC/APC, 900 micron buffer, 1.0 – 1.4 meter
xx = SA: SC/APC, 900 micron buffer, 1.0 – 1.4 meter

Optical Output Power

yy = 03: 3 dBm (2 mW)
yy = 06: 6 dBm (4mW)
yy = 09: 9 dBm (8 mW)
yy = 10: 10dBm (10 mW)

Mounting Bracket

z = B: Mounting Bracket
z = N: No Mounting Bracket

Example

1935W-B-1271-SA-10-N: Wide Bandwidth Uncooled O-Band CWDM Coaxial Laser, Enhanced Linearity, 1271nm, SC/APC optical connector, 1.0 – 1.4 meter fiber pigtail, 900 micron fiber buffer, 10 dBm optical power, no mounting bracket.

Information contained herein is deemed to be reliable and accurate as of issue date. EMCORE reserves the right to change the design or specifications of the product at any time without notice. EMCORE and the EMCORE logo are trademarks of EMCORE Corporation.

EMCORE CORPORATION

2015 West Chestnut Street
Alhambra, California 91803-1542
Tel: 626-293-3400
Fax: 626-293-3428
www.emcore.com

