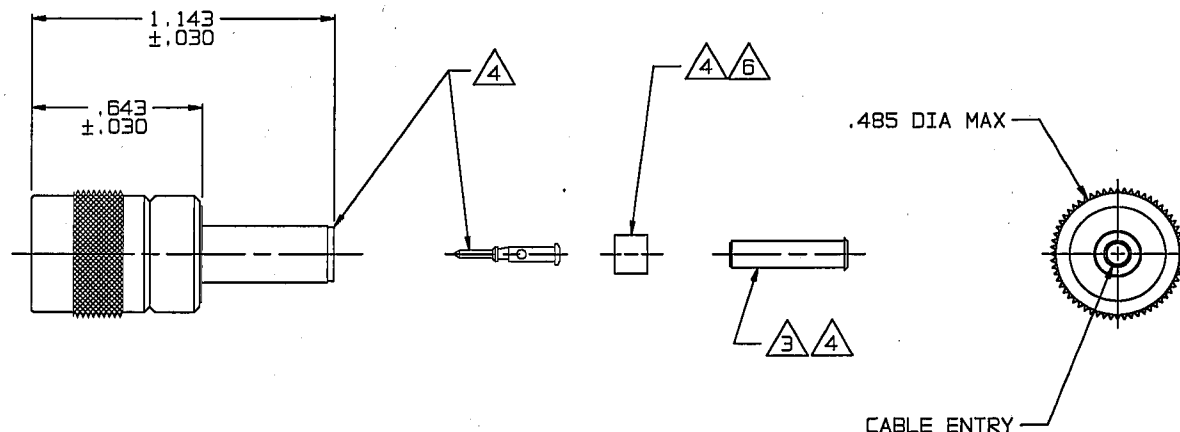


RED INDICATES ORIGINAL

DWG SIZE
C
DATA CONTAINED IN THIS DOCUMENT IS PROPRIETARY TO TROMPETER ELECTRONICS, INC. AND SHALL NOT BE DISCLOSED, COPIED OR REPRODUCED FOR PROCUREMENT OR MANUFACTURE WITHOUT EXPRESS WRITTEN PERMISSION.

REV ECD		DESCRIPTION	OWN	APPROVED	DATE
A	12557	DELETED: TAI-B118; ADDED: TAI-C118 FOR -013B, -015A, -022; SEE ECC	DKC		12/23/98

DASH NO	CABLES ACCOMMODATED	A HEX	ASSEMBLE PER	
-001	RG-178, -186	.178	TAI-A118	
-002	HEWLETT-PACKARD 8120-1107	.187		
-003	RG-174, -188, -316	.178		
-004	RG-178, -187	.178		
-005	MIL 17/094	.178		
-006	GRUMMAN-GC875GP1 DBL-SHLD RG-188	.187		
-007	275-3981 MICRODOT	.178		
-008	RG-185, -180 421-111 ESSEX	.178		
-009	8218 BELDEN 21-597 ESSEX	.178		
-010	RG-122	.178		
-011	RG-58, -141, -303 21-537 ESSEX	.213	TAI-C118	
-012	RG-55, -142, -223 RG-400	.213		
-013	RG-59	.255	TAI-A118	
-013A	TCC-75-2	.255		
-013B	RG-62	.255	TAI-C118	
-014	8212 BELDEN	.255		
-015	730A LUCENT	.290	TAI-A118	
-015A	RG-71	.290		
-016	724 LUCENT 6281 BELDEN	.324	TAI-A118	
-017	RG-6	.344		
-018	8288 BELDEN	.255		
-019	8279 BELDEN	.255		
-020	8248 BELDEN	.290		
-021	88240 BELDEN	.213		
-022	88241, 88268 BELDEN	.255		TAI-C118
-023	89108 BELDEN	.255		
-024	89120 BELDEN	.290		TAI-A118
-025	734A, LUCENT	.255		
-026	735A, LUCENT	.255		
-027	KS 18224L2 LUCENT	.178		
-028	YR23023 BELDEN	.178		



-001 SHOWN

INCH	MM
.005	0.13
.030	0.76
.178	4.52
.187	4.73
.197	5.00
.213	5.41
.255	6.48
.290	7.37
.324	8.23
.344	8.74
.485	12.32
.643	16.33
1.143	29.03

- △ 6 CONTACT SUPPORT BUSHING REQUIRED ON -013B, -015A & -022 ONLY
- 5. 75 OHM, 3-LUG RF COAXIAL TPS FULL CRIMP CABLE PLUG
- △ 4 PIN, SLEEVE ASSY, CRIMP SLEEVE & CONTACT SUPPORT BUSHING ARE SUPPLIED LOOSE
- △ 3 SLEEVE ASSY REQUIRED ON -001 THRU -007 & -027 ONLY
- 2. FINISH: TFS-1A (NICKEL)
- 1. ALL DIM ARE IN INCHES

QTY	DESCRIPTION	PART NUMBER	ITEM
TOL UNLESS SPECIFIED	TROMPETER ELECTRONICS, INC.		LPL50C
.XX ±			
.XXX ±			
.XXXX ±			
ANGLES			
OWN DKC 12-1-98	MATERIAL	CODE IDENT	DRAWING NO.
CHK		14949	1-0182
ENGR			A
NEXT ASSY	APPR	SCALE 2/1	DATE 8-9-81 SHEET 1 OF 2