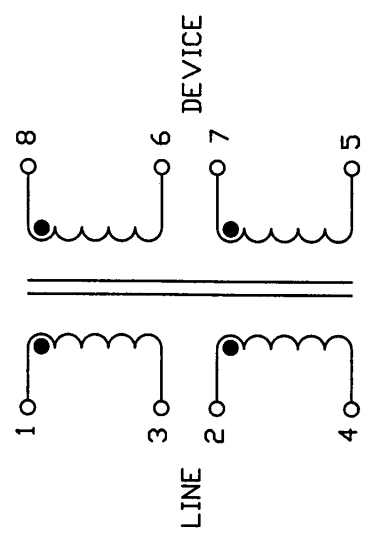


THE INFORMATION CONTAINED HEREIN IS CONSIDERED "PROPRIETARY" TO BEL FUSE INC. AND SHALL NOT BE COPIED, REPRODUCED OR DISCLOSED WITHOUT THE WRITTEN APPROVAL OF BEL FUSE INC.

ELECTRICAL CHARACTERISTICS @25°C

NOMINAL TURNS RATIO:  
 (8-5) : (1-4) 1 : 1.15  
 CONNECT TERMINALS 2 TO 3 & 6 TO 7

DC RESISTANCE:  
 (1-3) = (2-4) 0.62Ω MAX  
 (8-6) = (7-5) 0.62Ω MAX  
 CONNECT TERMINALS 2 TO 3 & 6 TO 7



INDUCTANCE @ 10 kHz, 0.1 Vrms:  
 (1-4) 474 μH ±6%  
 CONNECT TERMINALS 2 TO 3

LEAKAGE INDUCTANCE:  
 (1-4) 6 μH MAX  
 CONNECT TERMINALS 2 TO 3 & 6 TO 7

DIRECT CAPACITANCE:  
 BETWEEN (1-4) & (8-5) 35 pF MAX  
 CONNECT TERMINALS 2 TO 3 & 6 TO 7

TOTAL HARMONIC DISTORTION  
 12 Vpp, 150kHz, 100Ω LINE AND 75.6Ω LOAD. -82 dB MAX

MINIMUM DIELECTRIC RATING:  
 BETWEEN (1-4) & (8-5) 1500 Vrms  
 CONNECT TERMINALS 2 TO 3 & 6 TO 7

DESIGNED TO COMPLY WITH UL1950 AND ENG0950  
 SUPPLEMENTARY WITH 250 VAC WORKING VOLTAGE.

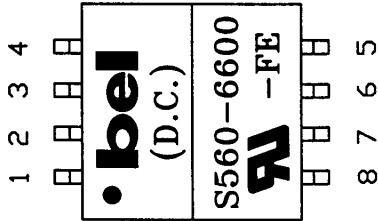
OPERATING TEMPERATURE RANGE: -40°C TO +85°C  
 SAFETY APPROVAL: UL E169987 BABT NC/011623

LONGITUDINAL BALANCE: 45 dB  
 20kHz - 1.1 MHz

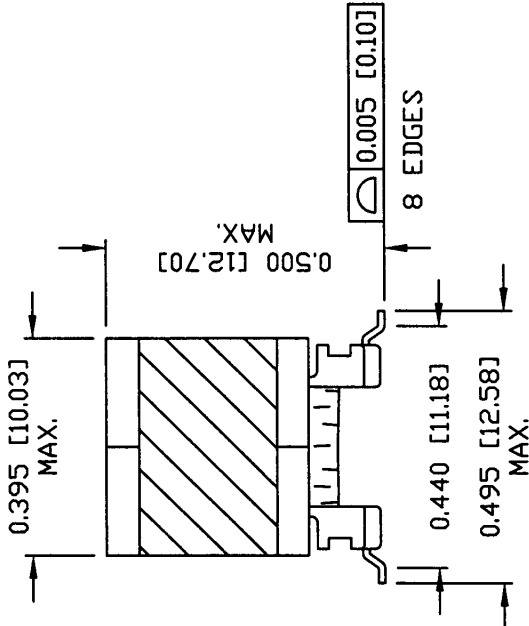
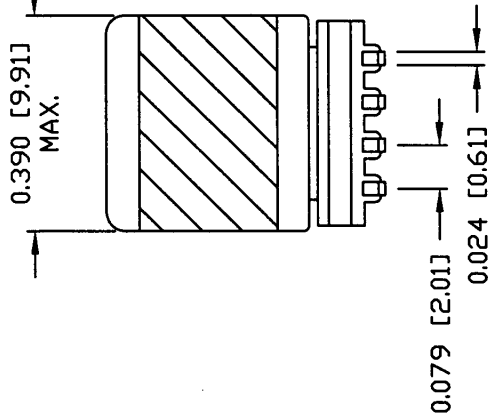
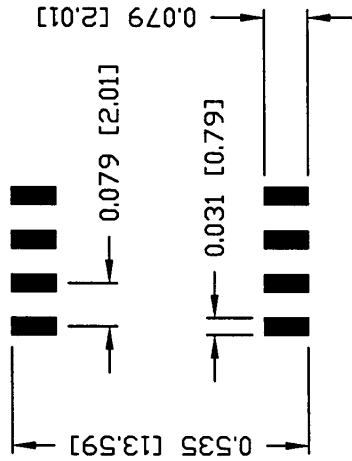
DRWN R. HARRIS \ IN DATE 07-17-02 CHKD HD NGUYEN \ DATE 07-17-02 FORM NO. - ENG0208504		TITLE ELECTRICAL SPECIFICATIONS		PART NO. / DRAWING NO. S560-6600-FE FILE NAME S5606600FEA.DWG		STANDARD DIM. TOL. IN INCH .X .XX .XXX		[ ] METRIC DIM. AS REFERENCE UNIT : INCH [mm] SCALE : N/A 		REV. : A SIZE : A4 PAGE : 2
--	--	------------------------------------	--	--	--	--	--	---	--	-----------------------------------



THE INFORMATION CONTAINED HEREIN IS CONSIDERED 'PROPRIETARY' TO BEL FUSE INC. AND SHALL NOT BE COPIED, REPRODUCED OR DISCLOSED WITHOUT THE WRITTEN APPROVAL OF BEL FUSE INC.

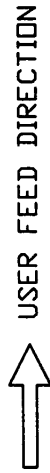
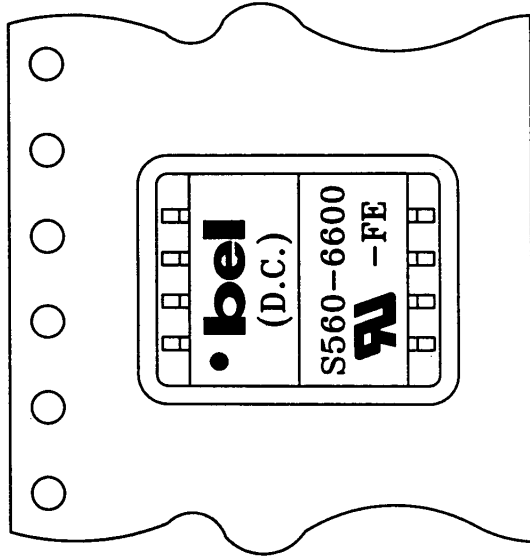


SUGGESTED PAD LAYOUT



NOTES:

- STANDARD MARKING REFER TO DOC. HAND-WORK-04.
- PACKAGE CODE: 'WSS001'.



ORIENTATION OF COMPONENT INSIDE POCKET

TAPE WIDTH	24MM
POCKET PITCH	20MM
QUANTITY OF COMPONENTS PER REEL	200
PLASTIC REEL OUTER DIAMETER	13 INCHES
PLASTIC REEL HUB DIAMETER	4 INCHES
COMPLY WITH EIA 481-2-A	

STANDARD DIM. TOL. IN INCH	[ ] METRIC DIM. AS REFERENCE
	UNIT : INCH [mm] REV. : A
	SCALE : N/A SIZE : A4
.X	
.XX	
.XXX	±0.005

PART NO. / DRAWING NO.	S560-6600-FE
FILE NAME	S5606600FEA.DWG

TITLE  
MECHANICAL SPECIFICATIONS

DRWN	R. HARRIS	DATE	07-16-04
CHKD	HD NGUYEN	DATE	07-16-04

