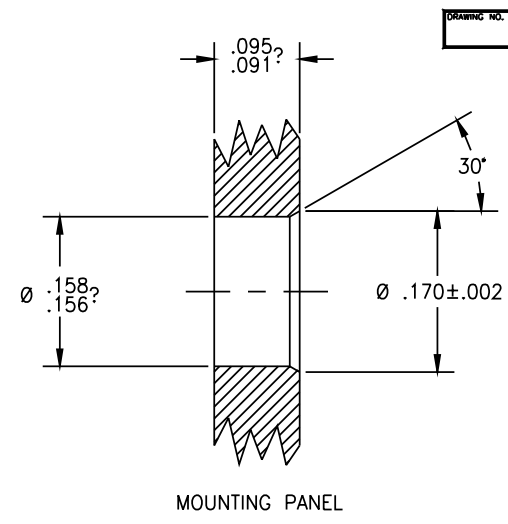
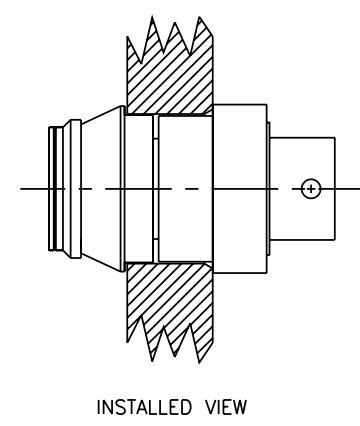
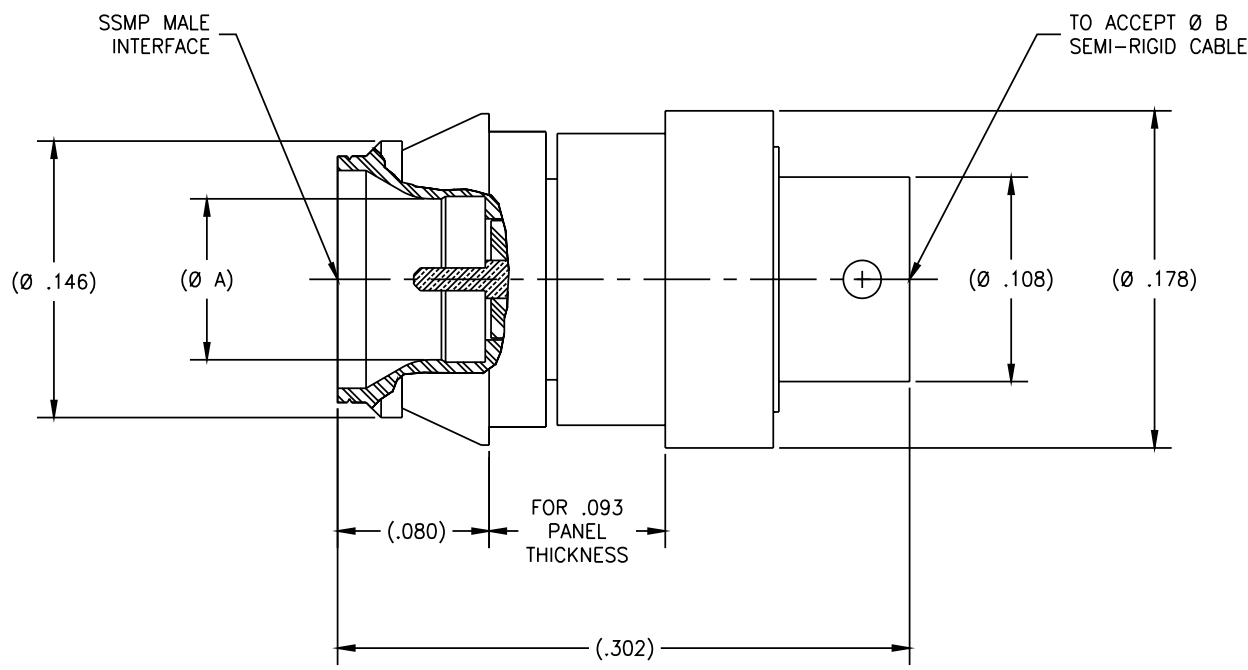


P/N	APPLICABLE NOTE(S)	(Ø A)	INTERFACE	'B' CABLE
-1CCSF	1,2,3	.088	SMOOTH BORE	.086
-2CCSF	1,2,3	.085	DETENT	.086
-3CCSF	1,2,3	.088	SMOOTH BORE	.047
-4CCSF	1,2,3	.085	DETENT	.047

REVISIONS				
ZONE	REV	DESCRIPTION	DATE	BY
-	B	ECO 13651	09.06.01	AGS
-	C	ECO 13644	09.21.01	AGS
-	D	ECO 17287 (-3CC & -4CC)	08.11.04	JF



DRAWING NO.	P155	REV.	D
-------------	------	------	---

- NOTE(S):
- MATERIAL(S):
    - BODY: 303 SST.
    - INSERT: BeCu ALLOY PER ASTM B-196.
    - CONTACT: BeCu ALLOY PER ASTM B-196.
    - INSULATOR: PTFE PER ASTM D-1710.
    - SNAP RING: BeCu ALLOY PER ASTM B-196.
  - FINISH(ES):
    - INSERT AND CONTACT: GOLD PLATE PER ASTM B-488 OVER NICKEL PLATE PER AMS-QQ-N-290.
    - BODY: PASSIVATED PER ASTM A-967.
    - SNAP RING: NICKEL PLATE PER AMS-QQ-N-290.
    - INSULATOR: NONE
  - ELECTRICAL PERFORMANCE(S):
    - FREQUENCY: DC - 26.5 GHz.
    - VSWR: 1.15:1 MAX TO 18.0 GHz.  
1.25:1 MAX 18.0 TO 26.5 GHz.
    - INSERTION LOSS: 0.10 dB MAX TO 18.0 GHz.  
0.20 dB MAX 18.0 TO 26.5 GHz.

APPLICABLE TENSOLITE DOCUMENTS			TOLERANCES AND NOTES EXCEPT AS NOTED		SEE NOTE(S)		SEE NOTE(S)		SEE NOTE(S)			
WORK STD	PROD INST	ASSY INST	DIMENSIONS ARE IN INCHES.		MATERIAL		SIZE		SPECIFICATION			
NA	NA	NA	LINEAR .XXX ±.005 ANGULAR ± 1/2° FRACTION ± 1/32		NEXT ASSY		-		PROCUREMENT			
NOTICE			1. MACHINE FINISH: $\sqrt{16}$ RMS		APPROVAL INITIALS		DATE		TITLE			
THIS DRAWING EMBODIES A CONFIDENTIAL PROPRIETARY DESIGN ORIGINATED BY TENSOLITE COMPANY AND ALL DESIGN, MANUFACTURING, REPRODUCTION, USE AND SALE RIGHTS REGARDING THE SAME ARE EXPRESSLY RESERVED. IT IS SUBMITTED UNDER A CONFIDENTIAL RELATIONSHIP FOR A SPECIFIED PURPOSE AND THE RECIPIENT AGREES BY ACCEPTING THIS DRAWING NOT TO SUPPLY OR DISCLOSE ANY INFORMATION REGARDING IT TO ANY UNAUTHORIZED PERSON OR TO INCORPORATE IN OTHER PRODUCTS ANY SPECIAL FEATURES PECULIAR TO THIS DESIGN. ALL PATENT RIGHTS HERETO ARE EXPRESSLY RESERVED BY TENSOLITE COMPANY, LONG BEACH, CALIFORNIA 90815.			2. BREAK ALL SHARP EDGES .003 MAX.		DRAWN BY: AGS		12.19.00		HIGH PERFORMANCE CABLES & INTERCONNECT SYSTEMS Long Beach, California 90815			
			3. MACHINED FILLETS .005 MAX.		CHECKED		QUALITY		SCALE		SUB-DIRECTORY/FILENAME	
			4. MACHINED SURFACES SQUARE TO RESPECTIVE AXIS WITHIN .005 INCHES PER INCH.		ENGINEERING		PCV		08.11.04		20:1	
			5. MACHINED DIAMETERS CONCENTRIC WITHIN .002 T.I.R.		SIZE		C		30990		SHEET 1 of 1	
			6. DIMENSIONS TO BE MET BEFORE PLATING.		DRAWING NO.		P155		REV.		D	
7. CHAMFER ALL THREADS 45°.												
8. THREADS PER H-28												
9. REMOVE FINISHED EDGES ON TEFLON.												
10. REMOVE ALL BURRS.												