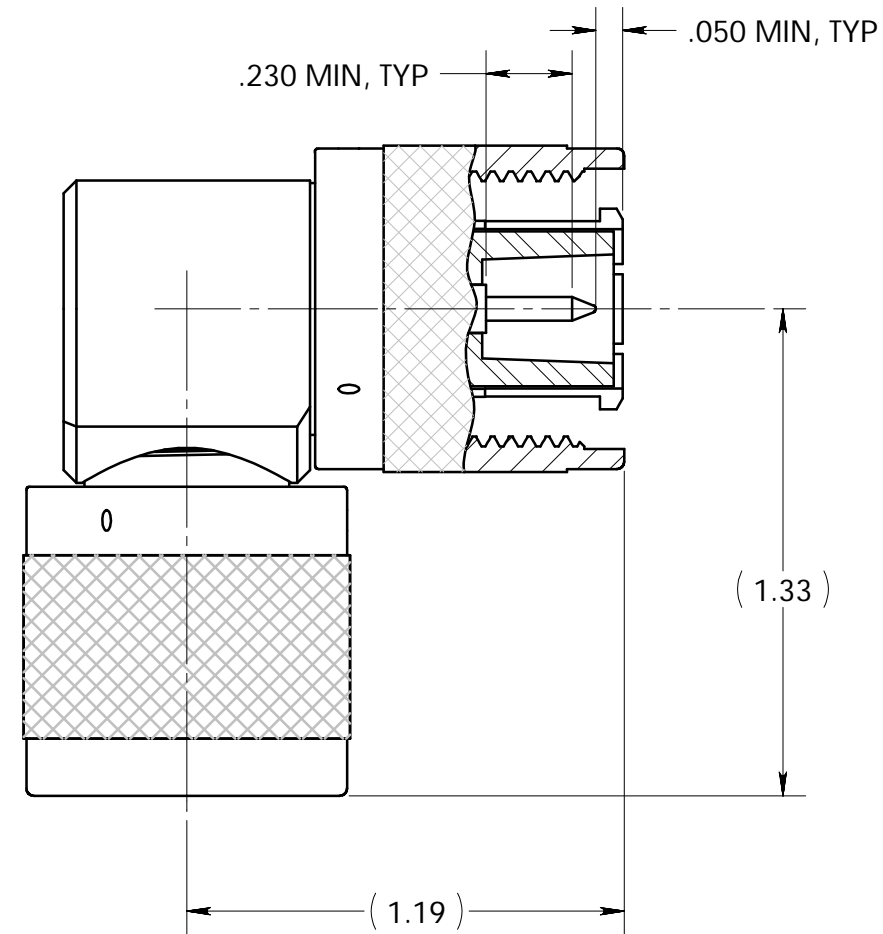
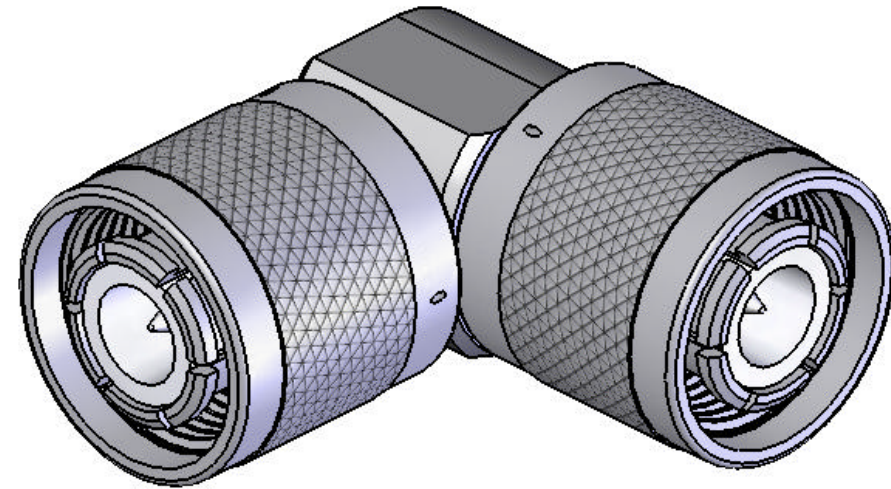


This document, including the design, configuration and mechanical features revealed herein are the sole, confidential and proprietary property of TRU Corporation. Reproduction or use thereof, in whole or part, is prohibited without the prior written consent of TRU Corporation.

| REV. | DESCRIPTION | DATE | APPROVED |
|------|----------------|---------|----------|
| - | ORIGINAL ISSUE | 9/11/07 | RMK |



ENGINEERING DATA:

ELECTRICAL:
 IMPEDANCE: 50 OHMS NOMINAL

MECHANICAL:
 INTERFACE: HN (m) per MIL-STD-348 Fig. 317.1 (except as shown)

WEIGHT: 0.25 POUNDS

MATERIAL:
 INSULATOR: PTFE (Teflon) per ASTM-D1710, I1A
 OUTER CONTACT FINGERS: BERYLLIUM COPPER C17300, TD04 per ASTM-B196
 OTHER METAL PARTS: BRASS C36000, H02 per ASTM-B16
 GASKET: SILICONE RUBBER per A-A-59588A, cl. 2A, gr. 50-60

FINISH:
 CENTER CONTACTS: SILVER PLATED
 OTHER METAL PARTS: NICKEL PLATED

- NOTES:**
- UNLESS OTHERWISE SPECIFIED; ALL DIMENSIONS ARE REFERENCE ONLY.
 - PRODUCT COMPLIES WITH RoHS DIRECTIVE 2002/95/EC.

| | | | | |
|--|---|------------------------|-----------------|--|
| MATERIAL | DO NOT SCALE DRAWING | DRAWN RMK | DATE 8/9/07 | TRU CORPORATION 245 LYNNFIELD STREET, PEABODY, MA 01960 The Custom Interconnect Leader™ |
| | UNLESS OTHERWISE SPECIFIED: DIMENSIONS ARE IN INCHES | ENG APPR. KOCH | DATE 9/11/07 | |
| COMMENTS: | TOLERANCES: FRACTIONS: ±1/64 .XX : ±.01 .XXX: ±.005 ANGLES: ±1/2° MACHINED SURFACES: 63/√ | MFG APPR. | DATE | TITLE: CONNECTOR, COAXIAL, RF ADAPTER, HN (m-m) RIGHT ANGLE |
| | | OTHER APPR. AM | DATE 9/11/07 | |
| surface area: ERROR!surface area sq inch weight: 0.252 lbs | | THIRD ANGLE PROJECTION | | SIZE B DWG. NO. TRU-15033 REV - |
| | | | | CAGE CODE: 92180 SCALE: 2:1 SHEET 1 OF 1 |