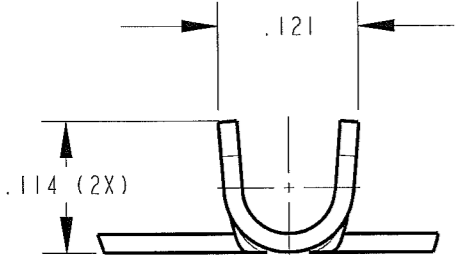
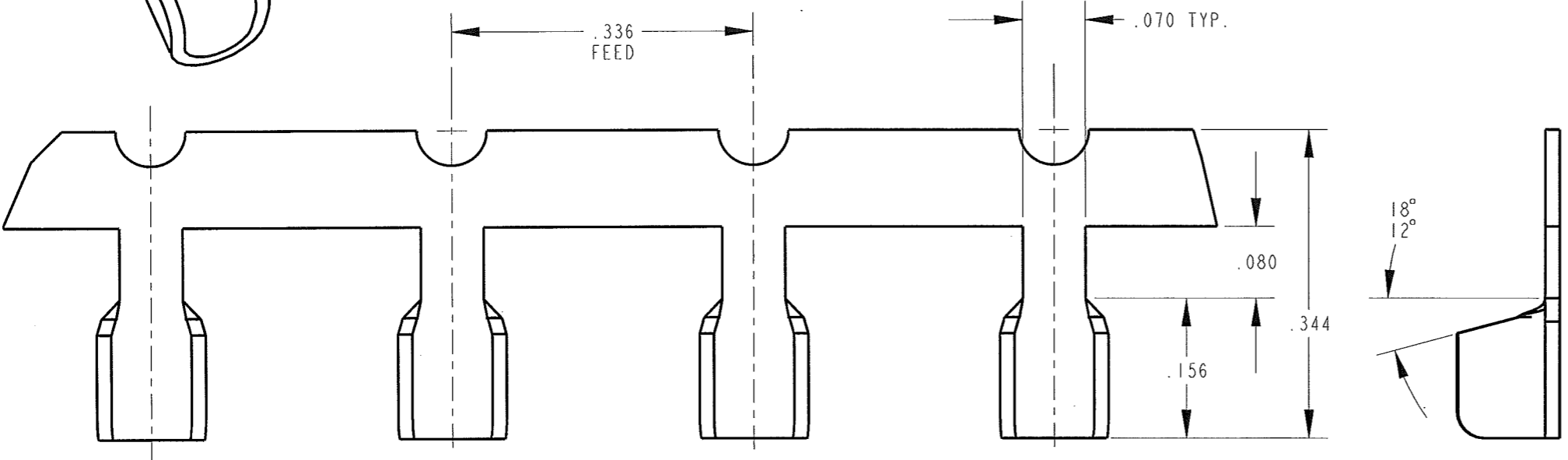
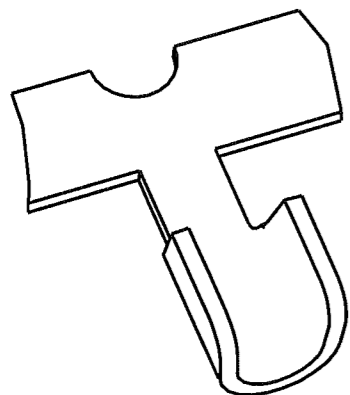


CUSTOMER DRAWING

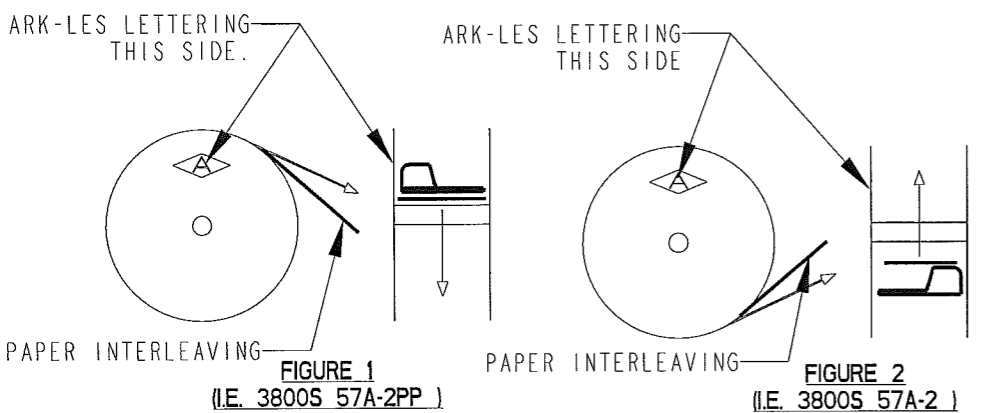
P/N: 3800S 57A1-2  
REV U

PART NUMBER	MATERIAL	FINISH
3800S 57A-2	.016 THICK BRASS	PRETINNED
3800S 57AB-2	.016 THICK BRASS	NONE



- NOTES:
1. CMA RANGE: 700-2750
  2. FOR PIGTAIL SPLICE USED IN BENCH APPLICATOR ADD SUFFIX "PP" TO PART NUMBER (I.E. 3800S 57A-2PP), SEE FIGURE 1 FOR REELING.
  3. FOR THROUGH SPLICES USED IN A BENCH APPLICATOR SEE FIGURE 2 FOR REELING.
  4. FOR PIGTAIL AND THROUGH SPLICES USED IN A SLIM-LINE AIR PRESS, SEE FIGURE 2 FOR REELING.
  5. SPLICES TO BE INTERLEAVED WITH .007 THICK KRAFT PAPER.

ARK-LES UNCONTROLLED



PRINT DIST.	PROD. REL. 95176	10/23/73	CHK'D	TOLERANCES UNLESS OTHERWISE SPECIFIED
	QUOTE REL. 92128	5/24/73	DD 11/17/06	DECIMALS ±.010
DEPT #	DRAWN BY D.O'NEILL 11/03/06		APP.	METRIC ±0.25mm
ENG X	SUPERSEDES DWG. DATED: 8/15/95		ET 11/17/06	ANGLES ±1°
SALES	SCALE 6:1	DO NOT SCALE PRINT		
STO X	MATERIAL: SEE TABLE			
RAL	FINISH: SEE TABLE			
JZ				
CHINA				

Ark-Les CORPORATION STOUGHTON, MA

**ORIGINAL IF RED**

PART NAME CUSTOMER DRAWING SPLICE TERMINAL

CAD#: 3800S\_57A-2-REVU\_CUST

P/N: 3800S 57A1-2

REV U

REV.	DESCRIPTION	DATE	DR.
U	REV/REDRWN ECR# S000127	11/03/06	DON