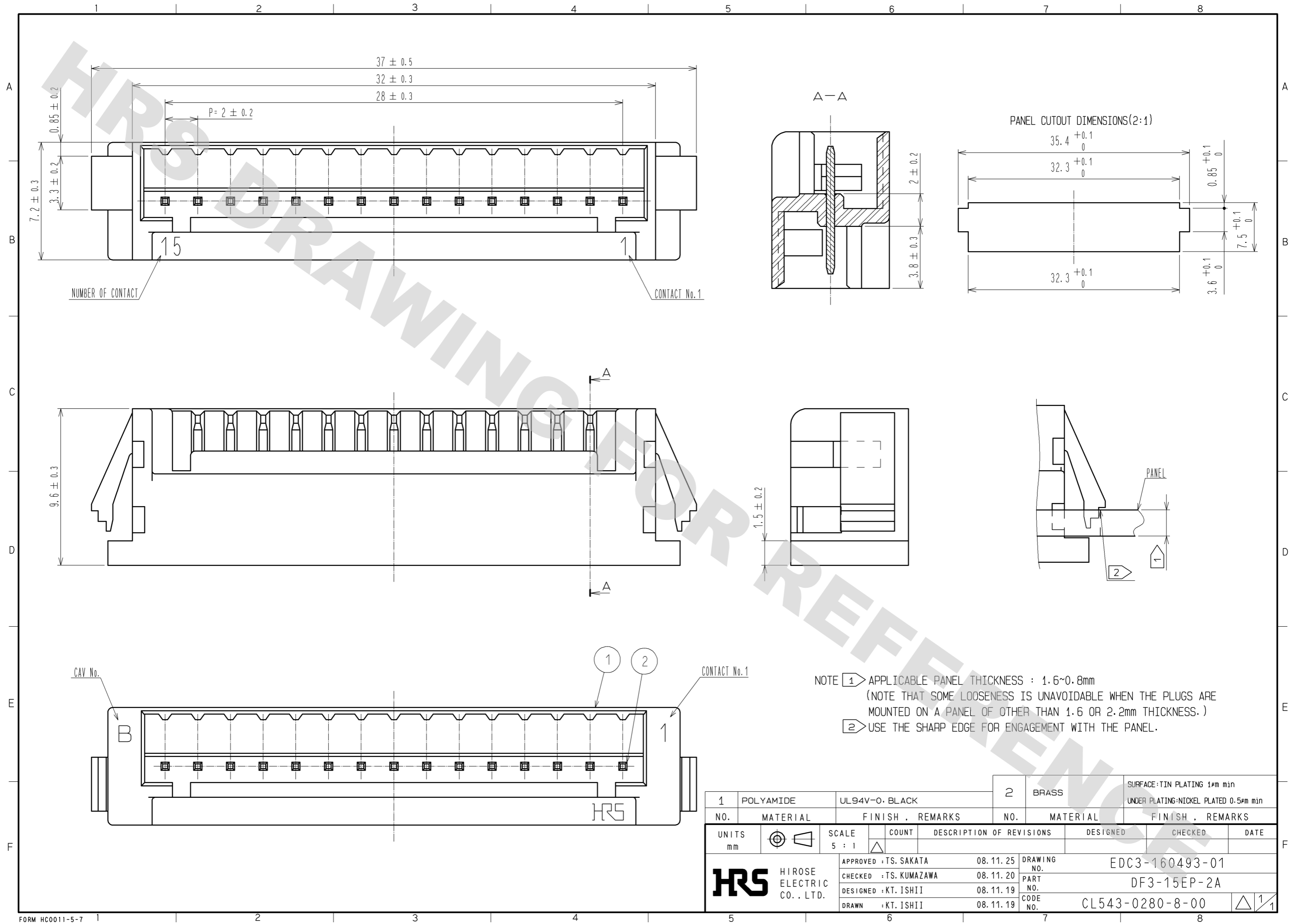


DRAWING FOR REFERENCE: This is subject to change without notice
08/11/2012



NOTE 1 APPLICABLE PANEL THICKNESS : 1.6~0.8mm
(NOTE THAT SOME LOOSENESS IS UNAVOIDABLE WHEN THE PLUGS ARE MOUNTED ON A PANEL OF OTHER THAN 1.6 OR 2.2mm THICKNESS.)
2 USE THE SHARP EDGE FOR ENGAGEMENT WITH THE PANEL.

1	POLYAMIDE	UL94V-0. BLACK	2	BRASS	SURFACE:TIN PLATING 1μm min UNDER PLATING:NICKEL PLATED 0.5μm min			
NO.	MATERIAL	FINISH . REMARKS	NO.	MATERIAL	FINISH . REMARKS			
UNITS	mm	SCALE	5 : 1	COUNT	DESCRIPTION OF REVISIONS	DESIGNED	CHECKED	DATE
		APPROVED : TS. SAKATA 08.11.25 CHECKED : TS. KUMAZAWA 08.11.20 DESIGNED : KT. ISHII 08.11.19 DRAWN : KT. ISHII 08.11.19		DRAWING NO. EDC3-160493-01 PART NO. DF3-15EP-2A CODE NO. CL543-0280-8-00		1/1		