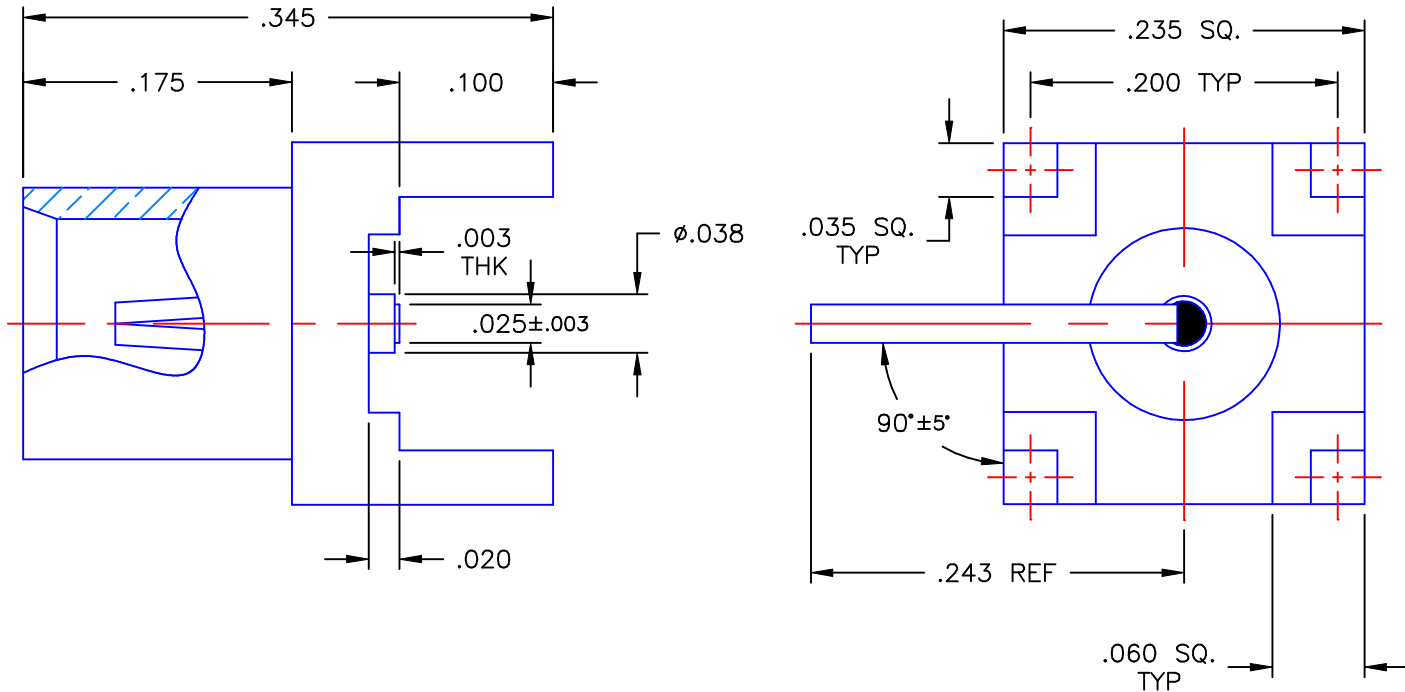


PROPRIETARY INFORMATION
 NOT TO BE RELEASED
 WITHOUT WRITTEN PERMISSION
 FROM AN AUTHORIZED
 REPRESENTATIVE OF
 APPLIED ENGINEERING PRODUCTS

REVISIONS			
REV	DESCRIPTION	DATE	APPROVED
A	INITIAL RELEASE	02/05/07	D.N.




NOTES:

MATERIALS:

1. BODY = BRASS PER ASTM B16, ALLOY C36000, TEMPER H02.
2. INSULATOR = VIRGIN WHITE TEFLON PER ASTM D1710, GRADE 1, TYPE I, CLASS "B".
3. CONTACT & TAB = BERYLLIUM COPPER PER ASTM B196, ALLOY C17300, TEMPER TD04.

FINISHES:

1. BODY = GOLD PLATE PER MIL-G-45204, TYPE II, GRADE C, .00001 MIN. OVER STRESS FREE NICKEL PLATE PER QQ-N-290, .00002 TO .00004 THICK OVER A MIN. COPPER STRIKE PER MIL-C-14550.
2. CONTACT = GOLD PLATE PER MIL-G-45204, TYPE II, CLASS 0, GRADE C, OVER .00010 TO .00020 SULFAMATE NICKEL PER QQ-N-290.

UNLESS OTHERWISE SPECIFIED DIMENSIONS ARE IN INCHES TOLERANCES ON	DWN: A.D.M.	DATE 02/05/07	 APPLIED ENGINEERING PRODUCTS 104 John W. Murphy Dr. New Haven, CT 06513	
	CHKD: D.N.	DATE 02/05/07		
DECIMAL	ANGLE	APVD: J.M.		DATE 02/05/07
REFERENCE:	MATERIALS & FINISHES: SEE NOTES		75 ohm MCX STRAIGHT JACK P.C.B. MOUNT WITH TAB RECEPTACLE	
ORIGINATOR: A.D.M. DATE: 02/05/07	SIZE A	FSCM NO. 19505	DWG NO. 8979-1511-009 REV A	
	SCALE 8:1	THIRD ANGLE PROJECTION	SHEET 1 OF 1	

8979-1511-009