

SILICON TRANSISTORS

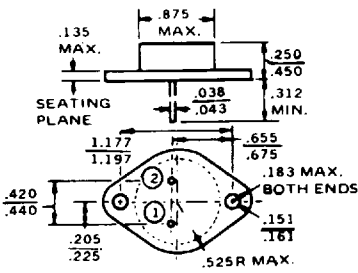
ADVANCED SEMICONDUCTOR

82 DE

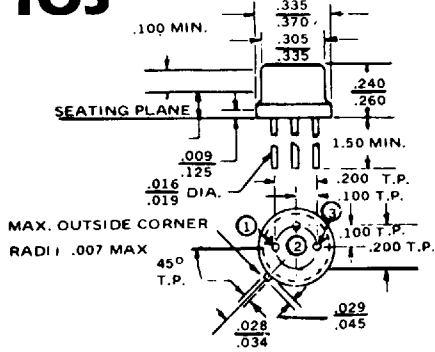
0258354 0000049 0

DEVICE TYPE NO.	POLARITY	$P_D @ T_C=25^\circ C$	MAXIMUM RATINGS				ELECTRICAL CHARACTERISTICS				CASE
		WATTS	I_C AMPS	BV_{CBO}	BV_{CE}	BV_{EBO}	h_{FE} MIN.	I_C AMPS	V_{CE}	f MHZ *KHZ	
2N6055	NPN	100	8.00	60	60	5	750	4.00	3	4	T03
2N6056	NPN	100	8.00	80	80	5	750	4.00	3	4	T03
2N6057	NPN	150	12.0	60	60	5	750	6.00	3	4	T03
2N6058	NPN	150	12.0	80	80	5	750	6.00	3	4	T03
2N6059	NPN	150	12.0	100	100	5	750	6.00	3	4	T03
2N6099	NPN	150	12.0	80	80	5	750	6.00	3	1	T03
2N6101	NPN	75.0	10.0	80	70	8	20	5.00	4	1	TO220
2N6103	NPN	75.0	10.0	45	40	5	15	8.00	4	1	TO220
2N6107	PNP	40.0	7.00	80	70	5	30	2.00	4	10	TO220
2N6109	PNP	40.0	7.00	60	50	5	30	2.50	4	10	TP220
2N6111	PNP	40.0	7.00	40	30	5	30	3.00	4	10	TO220
2N6121	NPN	40.0	4.00	45	45	5	25	1.50	2	2.5	TO220
2N6122	NPN	40.0	4.00	60	60	5	25	1.50	2	2.5	TO220
2N6123	NPN	40.0	4.00	80	80	5	20	1.50	2	2.5	TO220
2N6124	PNP	40.0	4.00	45	45	5	25	1.50	2	2.5	TO220
2N6125	PNP	40.0	4.00	60	60	5	25	1.50	2	2.5	TO220
2N6126	PNP	40.0	4.00	80	80	5	20	1.50	2	2.5	TO220
2N6129	NPN	50.0	7.00	40	40	5	20	2.50	4	2.5	TO220
2N6130	NPN	50.0	7.00	60	60	5	20	2.50	4	2.5	TO220
2N6131	NPN	50.0	7.00	80	80	5	20	2.50	4	2.5	TO220
2N6132	PNP	50.0	7.00	40	40	5	20	2.50	4	2.5	TO220
2N6133	PNP	50.0	7.00	60	60	5	20	2.50	4	2.5	TO220
2N6134	PNP	50.0	7.00	80	80	5	20	2.50	4	2.5	TO220
2N6226	PNP	150	6.00	100	100	7	25	3.00	2	1	T03
2N6227	PNP	150	6.00	120	120	7	20	3.00	2	1	T03
2N6228	PNP	150	6.00	140	140	7	15	3.00	2	1	T03
2N6229	PNP	150	10.0	100	100	7	25	5.00	2	1	T03
2N6230	PNP	150	10.0	120	120	7	20	5.00	2	1	T03
2N6231	PNP	150	10.0	140	140	7	15	5.00	2	1	T03
2N6233	NPN	50.0	5.00	250	225	6	25	1.00	5	20	TO66
2N6234	NPN	50.0	5.00	300	275	6	25	1.00	5	20	TO66
2N6235	NPN	50.0	5.00	350	325	6	25	1.00	5	20	TO66
2N6246	PNP	125	10.0	70	60	5	20	7.00	4	10	T03
2N6247	PNP	125	15.0	90	80	5	20	6.00	4	10	T03
2N6248	PNP	125	15.0	110	100	5	20	5.00	4	10	T03
2N6249	NPN	100	10.0	300	225	6	10	10.0	3	2.5	T03
2N6250	NPN	100	10.0	375	300	5	8	10.0	3	2.5	T03
2N6251	NPN	100	10.0	450	375	6	6	10.0	3	2.5	T03
2N6253	NPN	115	15.0	55	45	5	20	3.00	4	*800	T03
2N6254	NPN	150	15.0	100	80	7	20	5.00	2	*800	T03
2N6257	NPN	150	20.0	50	40	5	15	8.00	4	*200	T03
2N6258	NPN	250	30.0	100	80	7	20	15.0	2	*200	T03
2N6259	NPN	250	16.0	170	150	7	15	8.00	2	*200	T03
2N6262	NPN	150	10.0	170	150	7	20	3.00	2	100	T03
2N6274	NPN	250	50.0	170	100	6	30	20.0	4	30	T03 MOD
2N6275	NPN	250	50.0	140	120	6	30	20.0	4	30	T03 MOD
2N6276	NPN	240	50.0	160	140	6	30	20.0	4	30	T03 MOD
2N6277	NPN	250	50.0	180	150	6	30	20.0	4	30	T03 MOD
2N6278	NPN	250	50.0	120	100	6	30	20.0	4	30	TO63
2N6282	NPN	160	20.0	60	60	5	750	10.0	3	4	T03
2N6283	NPN	160	20.0	80	80	5	750	10.0	3	4	T03
2N6284	NPN	160	20.0	100	100	5	750	10.0	3	4	T03
2N6285	PNP	160	20.0	60	60	5	750	10.0	3	4	T03
2N6286	PNP	160	20.0	80	80	5	750	10.0	3	4	T03
2N6287	PNP	160	20.0	100	100	5	750	10.0	3	4	T03
2N6288	NPN	16.0	7.00	40	40	5	30	3.00	4	4	TO220
2N6290	NPN	16.0	7.00	60	60	5	30	2.50	4	4	TO220
2N6292	NPN	16.0	7.00	80	80	5	30	2.00	4	4	TO220
2N6306	NPN	125	8.00	500	250	8	15	3.00	5	5	T03
2N6307	NPN	125	8.00	600	300	8	15	3.00	5	5	T03
2N6308	NPN	125	8.00	700	350	8	12	3.00	5	5	T03
2N6326	NPN	200	30.0	60	60	5	12	15.0	4	3	T03
2N6327	NPN	200	30.0	80	80	5	12	15.0	4	3	T03
2N6328	NPN	200	30.0	100	100	5	12	15.0	4	3	T03

TO3

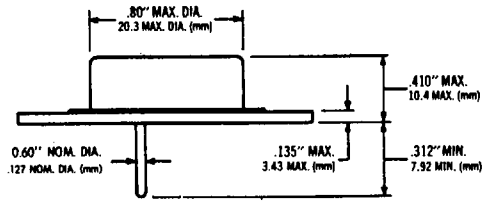


TO5

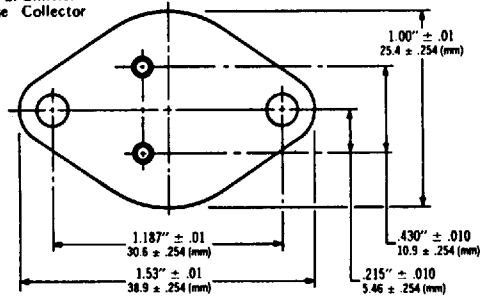


TO3-MOD

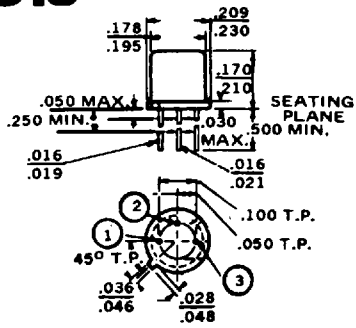
Case TO3 MODIFIED (.050" Pin Dia.)



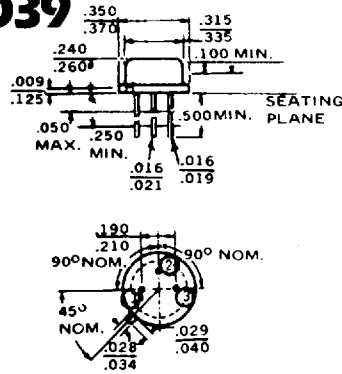
Pin 1. Base
2. Emitter
Case Collector



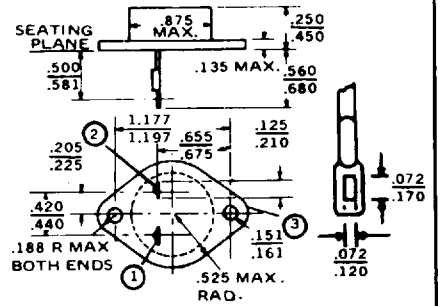
TO18



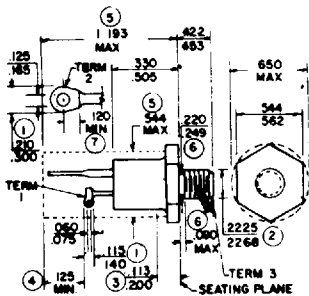
TO39



TO41



TO48



TO61

