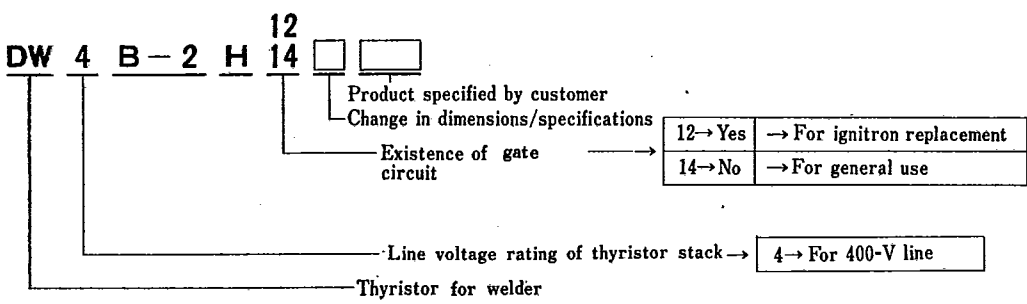


THYRISTOR STACK (FLAT PACKAGE THYRISTOR STACK FOR RESISTANCE WELDING)

39 DE 9097250 0002348 3

BW4B-2H¹²/₁₄ CW4B-2H¹²/₁₄ DW4B-2H¹²/₁₄ EW4B-2H¹²/₁₄ FW4B-2H¹²/₁₄

TYPE CODING



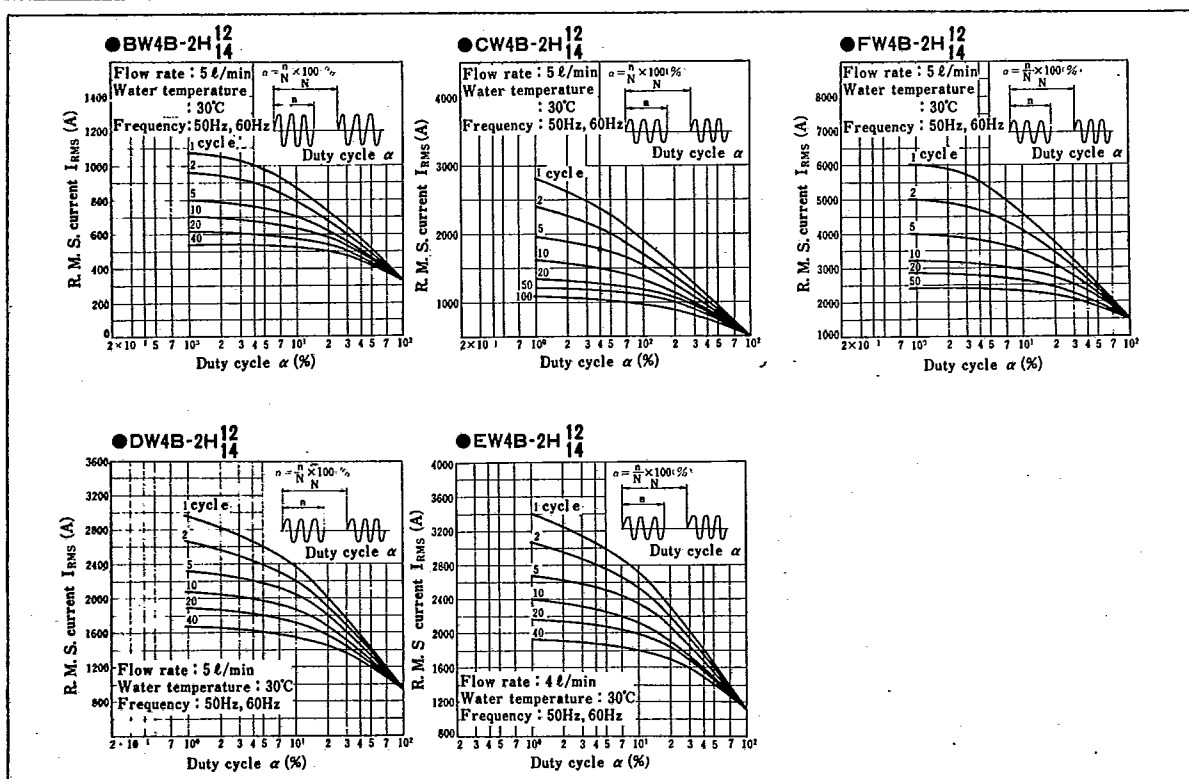
MAXIMUM RATINGS / CHARACTERISTICS

CHARACTERISTIC	SYMBOL	UNIT	Rated Voltage
Recommended AC line voltage	Ea	V	220/440
Repetitive peak reverse voltage, off-state voltage	VRRM	V	600/1200
Non-repetitive peak reverse voltage, off-state voltage	VRSM	V	730/1450

CHARACTERISTIC	SYMBOL	UNIT	BW4B-2H ¹² / ₁₄	CW4B-2H ¹² / ₁₄	DW4B-2H ¹² / ₁₄	EW4B-2H ¹² / ₁₄	FW4B-2H ¹² / ₁₄
Size concerned with JIS standards							
			WTh-B- ²⁰⁰ / ₄₀₀ -4	WTh-C- ²⁰⁰ / ₄₀₀ -5	WTh-D- ²⁰⁰ / ₄₀₀ -5	WTh-E- ²⁰⁰ / ₄₀₀ -5	WTh-F- ²⁰⁰ / ₄₀₀ -5
R. M. S. current	Duty cycles α=30% *1	A	600	950	1440	1700	2250
	Duty cycles α=100% *2	A	350	500	960	1100	1500
One-cycle surge on-state current 50Hz (60)(Non-Repetitive)	ITSM	A	2000(2200)	5000(5500)	7000(7300)	10000(11000)	14000(15400)
Gate trigger voltage (Tc=25°C)	VGT	V	1.5Max.	2.0Max.	2.0Max.	2.0Max.	2.0Max.
Gate trigger current (Tc=25°C)	IGT	mA	100Max.	150Max.	200Max.	200Max.	200Max.
Isolation voltage		V	2000	2000	2000	2000	2000
Isolation resistance *3		MΩ	10 ↑	10 ↑	10 ↑	10 ↑	10 ↑
Flow rate		ℓ/min.	4	5	5	5	5
Water temperature	Tw	°C	0 ~ 50	0 ~ 50	0 ~ 50	0 ~ 50	0 ~ 50
Storage temperature range	Tstg	°C	-40 ~ +80	-40 ~ +80	-40 ~ +80	-40 ~ +80	-40 ~ +80
Weight		kg	1.6	1.6	1.8	1.8	2.0
Thyristor average on-state current		A	100	250	400	500	800

*1 n=20 Cycle Tw=30°C *2 Tw=30°C *3 500V megger

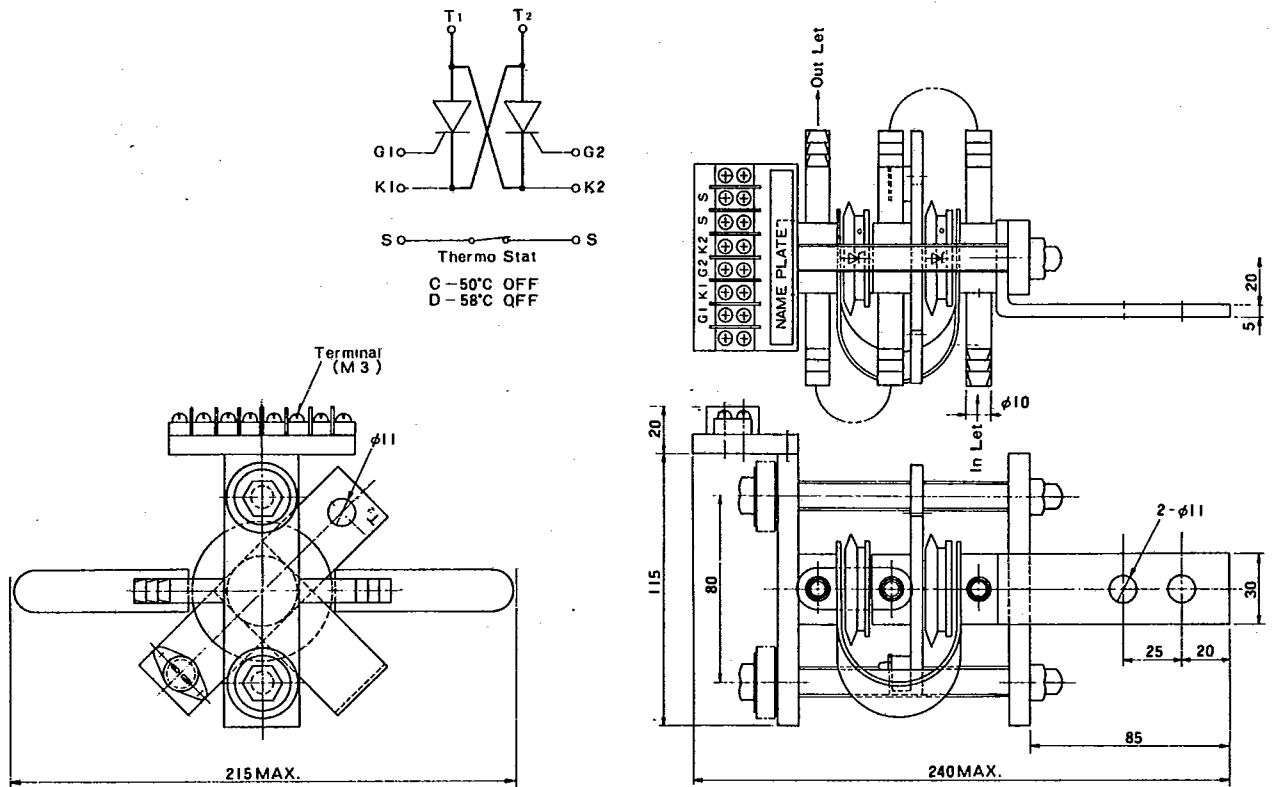
CHARACTERISTICS R. M. S. CURRENT-DUTY CYCLE



39 DE 9097250 0002349 5

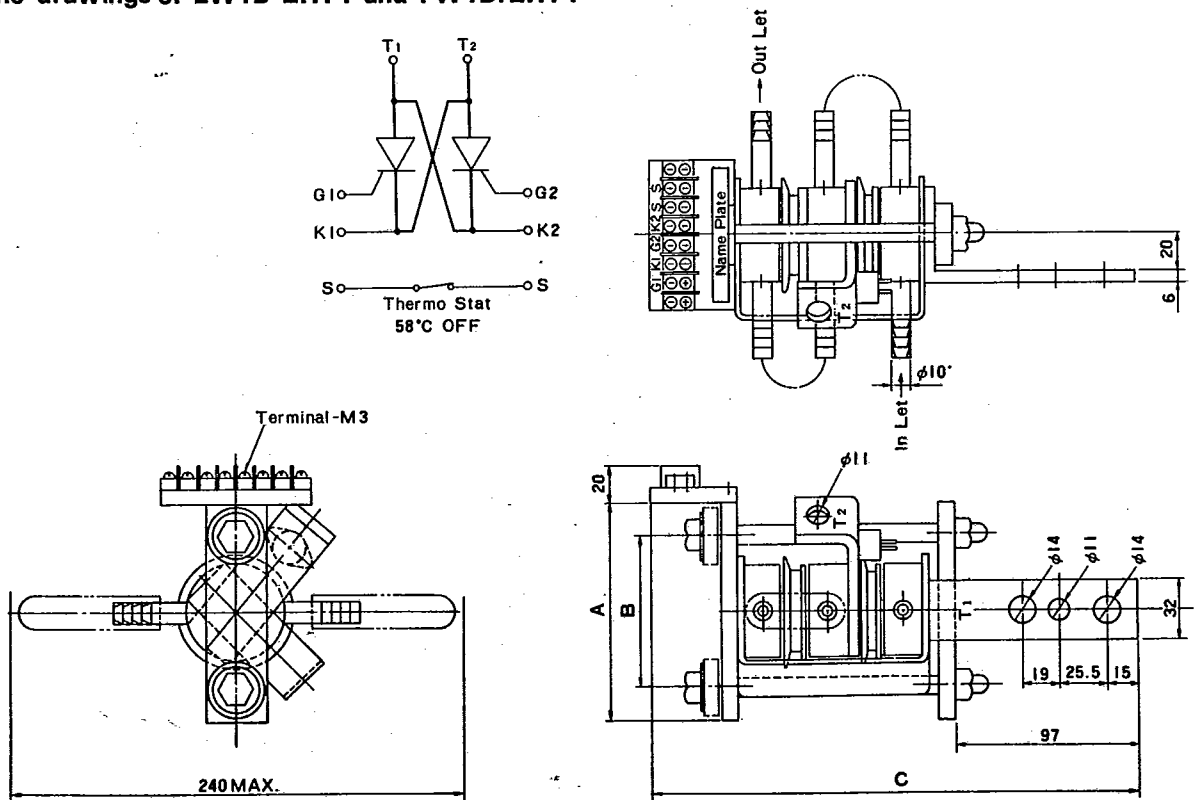
Outline drawings of BW4B-2H14, CW4B-2H14 and DW4B-2H14

Unit in mm



Outline drawings of EW4B-2H14 and FW4B.2H14

Unit in mm



Type	Dim	A	B	C
EW4B-2H14		115	80	260
FW4B-2H14		135	102	270