

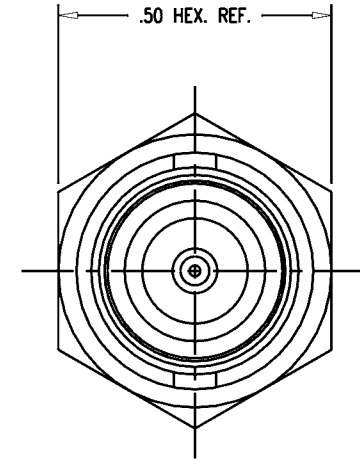
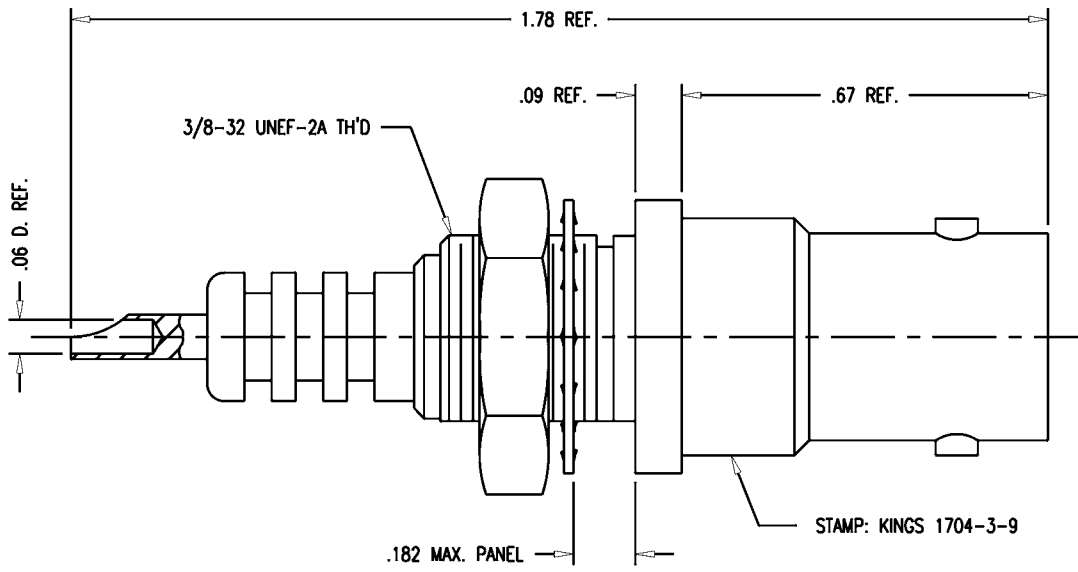
DASH NO.	M CODE	MADE FROM
----------	--------	-----------

# GSD

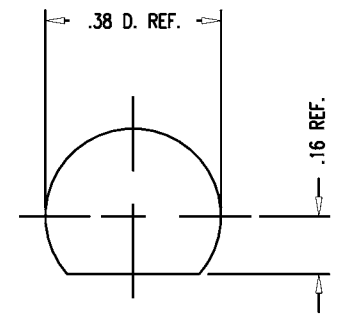
### REVISIONS

ISSUE	CHANGES
0	ER 36253 ME 04/27/95

1704-3-9



- NOTES:**
- INTERFACE PER MIL-STD-348, FIG. 314-1.
  - MATERIALS:**  
INSULATOR: TEFLON, ASTM-D-4894  
LOCKWASHER: PHOSPHOR BRONZE, ASTM-B-103  
ALL OTHER METAL PARTS: BRASS, ASTM-B16
  - FINISHES:**  
CENTER CONTACT: GOLD PLATE PER MIL-G-45204  
ALL OTHER METAL PARTS: KINGS TARNISH RESISTANT NICKEL FINISH (TR-5)
  - ELECTRIAL CHARACTERISTICS:**  
NOMINAL IMPEDANCE: NON-CONSTANT  
VOLTAGE RATING: 3500 VOLTS RMS  
6000 VOLTS DC



MOUNTING HOLE

# GSD

QGS0161

SCALE 4:1	
APPROX SURFACE AREA	
USED ON	
REF:	
RECEPTACLE, PANEL, SHV, F	
DRAWN ME	DATE 04/27/95
DESIGN AR	DATE 04/27/95
APPR. VLS	DATE 04/28/95

**KINGS**  
ELECTRONICS CO., INC.  
TUCKAHOE, NEW YORK 10707

1704-3-9