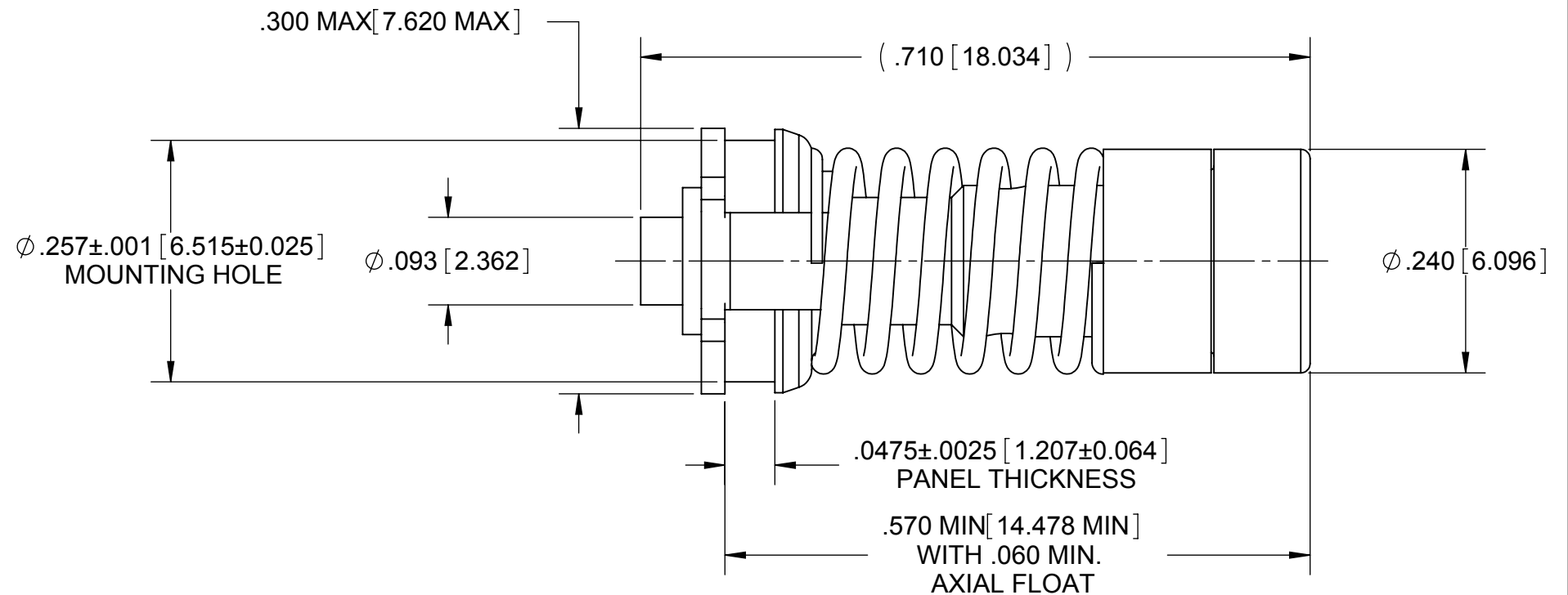


REVISION HISTORY			
REV	DESCRIPTION	DATE	APPROVED
01	PRELIMINARY	04/10	DAL

PRODUCT DATA DRAWING



MATERIAL:

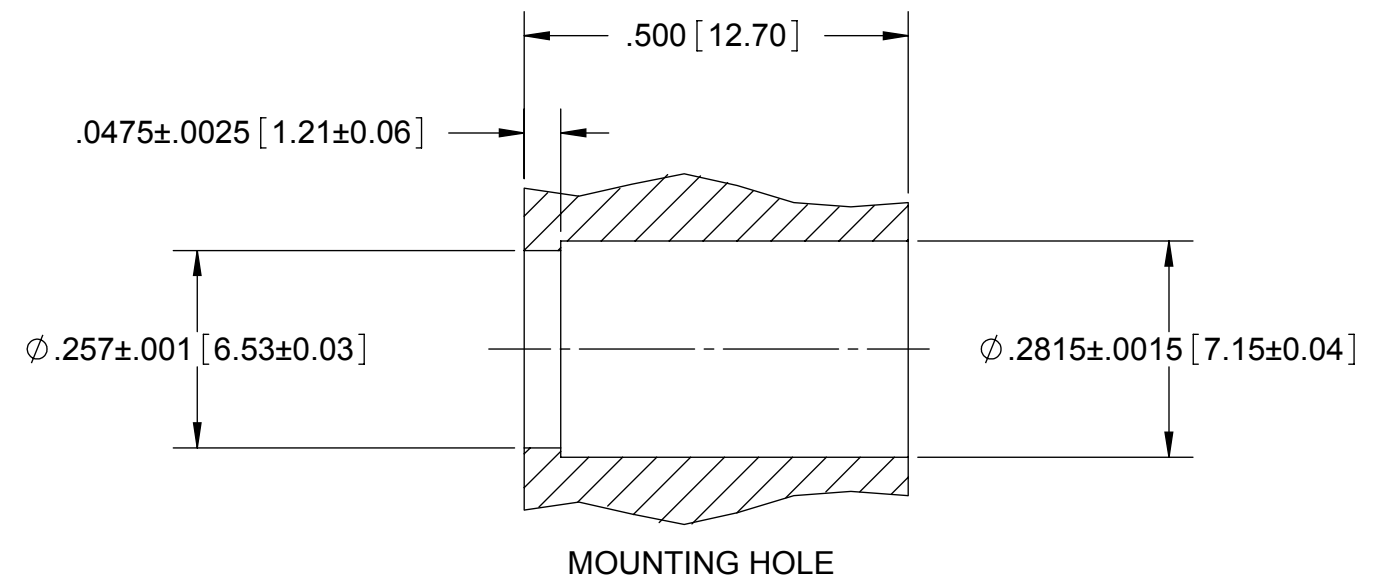
- BODY, INSERT:** STAINLESS STEEL PER AMS-5640, UNS S30300, TYPE 303
- CONTACT, SPRING CLIP, CONTACT SLEEVE:** BERYLLIUM COPPER PER ASTM B196 ALLOY UNS C17300, COND TD04
- SHIM SPRING, OUTER CONTACT:** BERYLLIUM COPPER PER ASTM B194 ALLOY UNS C17200, COND TD04
- COIL SPRING:** MUSIC WIRE PER ASTM A228
- E-RING:** STAINLESS STEEL PER ASTM A240 ALLOY UNS S30400, TYPE 304
- INSULATOR:** PTFE PER ASTM D1710, TYPE I, GRADE 1, CLASS B

FINISH:

- BODY, INSERT, SPRING CLIP, CONTACTS, SHIM SPRING:** GOLD PER ASTM B488, TYPE II, CODE C, CLASS 1.27; OVER NICKEL PER AMS-QQ-N-290, CLASS 1, .00005 MIN.
- COIL SPRING:** ZINC PER ASTM B633
- E-RING:** PASSIVATED PER AMS-QQ-P-35, TYPE II

PERFORMANCE:

- IMPEDANCE:** 50 OHMS
- FREQ. RANGE:** DC TO 28.0 GHZ



MATERIAL: SEE ABOVE	DIMENSIONS ARE IN INCHES TOLERANCES: FRACTIONAL: ±1/64 ANGULAR: X° ±1'0" X°X' ±15'	UNLESS OTHERWISE SPECIFIED 1) ALL DIMENSIONS ARE AFTER PLATING. 2) BREAK CORNERS & EDGES .005 R. MAX. 3) CHAM. 1ST & LAST THREADS. 4) SURFACE ROUGHNESS 32 S MIL-STD-10. 5) DIA. 'S ON COMMON CENTERS TO BE CONCENTRIC WITHIN .005 T.I.R. 6) REMOVE ALL BURRS	SV Microwave, Inc. 2400 Centrepark West Drive, Suite 100 West Palm Beach, FL 33409
FINISH: SEE ABOVE	DECIMAL: .X ±.030 .XX ±.010 .XXX ±.005	INTERPRET DIMENSIONS AND TOLERANCES PER ASME Y14.5M - 1994	TITLE: BMMA JACK FLOAT MOUNTED FOR .047 S.R. CABLE
SURFACE AREA: N/A	THIRD ANGLE PROJECTION	DRAWN: NHR 04/14/10	SIZE: B CAGE CODE: 95077 DWG. NO. 1421-60006
PROPRIETARY THE INFORMATION CONTAINED IN THIS DRAWING IS THE SOLE PROPERTY OF SV MICROWAVE, INC. ANY REPRODUCTION IN PART OR AS A WHOLE WITHOUT THE WRITTEN PERMISSION OF SV MICROWAVE, INC IS PROHIBITED.		CHECKED: DAL 04/14/10	SCALE: 4:1
		APPROVED: DAL 04/14/10	SHEET 1 OF 1