

Type: CMS5D38

Under Development

Product Description

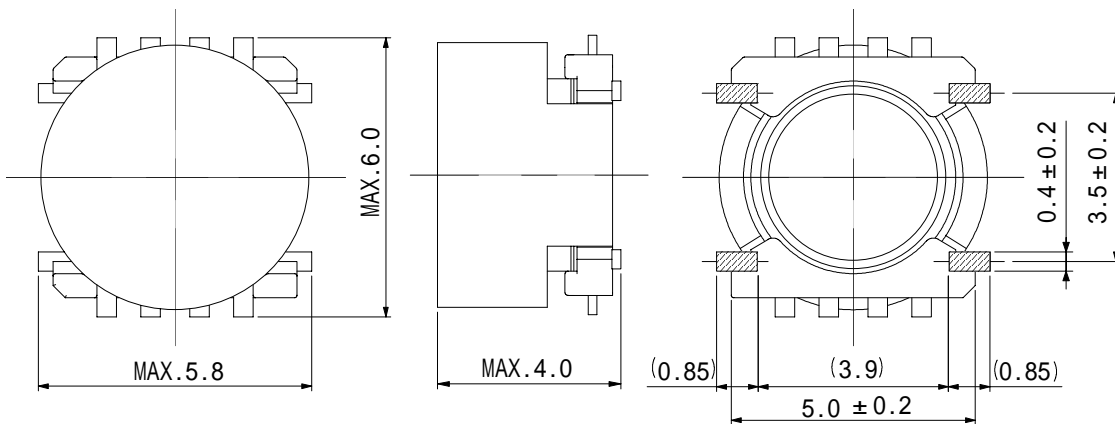
- Low loss ferrite core to be used.
- Low leakage Inductance.
- Max. 330V output voltage.
- Special winding technology for high reliability.
- Custom design is available.



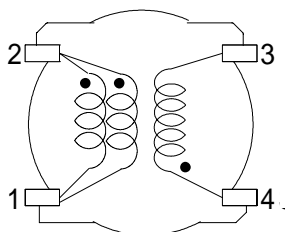
Feature

- Max. operating frequency: 1MHz.
- Storage temperature range: -25 ~+105 .
- Operating temperature range: -25 ~+105 (including coil's self-heat).
- Product weight: 0.28g(Ref.).
- Step up transformer for DSC strobe light.
- RoHS Compliance.

Dimensions (mm)

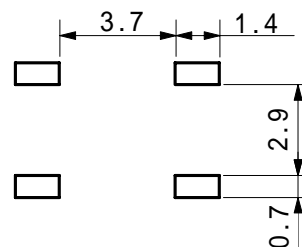


Schematics (Bottom)



“•” Indicates polarity.

Land Pattern (mm)



Type: CMS5D38

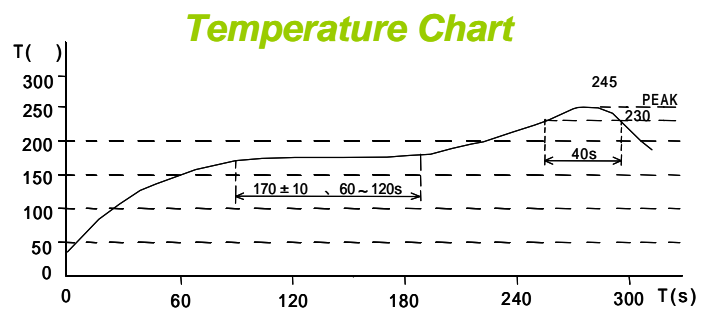
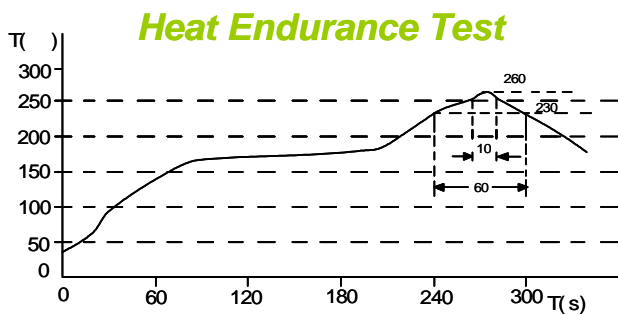
Under Development

Specification

Sample No.	Inductance(μH) (2-1) 1kHz	Inductance(mH) (4-3) 1kHz	D.C.R.(2-1) (m)	D.C.R.(4-3) ()	Leakage L(4-3) 100kHz(2-1shorted)	DC superposition permission current (1-2)(A) 1
PS06-125	10 ± 25%	6.25 ± 15%	170±25%	22.5±15%	30nH Max.	0.7

1. DC superposition permission current : this indicates the value of current at which the inductance decreases to 90% of its initial value at DC superposition.

Recommendation Reflow Condition



Packaging with Embossed Tape and Reel

Qty.: 1000pcs/reel

