

X07080 Series VCXO

Applications

SONET/SDH
Cellular Base Stations
Phase Locking
Data Communications



Features

High Frequency Fundamental
Wide Pulling Range
Standard 14 Pin DIP/DIL

Typical Specifications

Model	Frequency (MHz)	Temperature Range (°C)	Temperature Stability	Tuning	Output	Supply Voltage
X07080	50	-40 to +70	±25 ppm	±40 ppm	Sine	5 V ±0.25 V
Options	10 - 160	-55 to +105	Consult Factory	±30 to ±75 ppm	HCMOS	3.3 to 15

Additional Specifications

Current: 3 mA max
Electronic frequency control
Tuning voltage range: 0 V to 5 V
Frequency tuning range: ±40 ppm Typ
Transfer function: Negative monotonic
Tune port modulation bandwidth: 1 kHz min

Sinewave Version

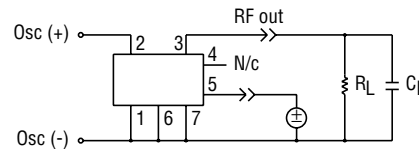
Level: 2.0 V pk-pk
Load: 50 Ω or 1 k Ω//10 pF

HCMOS Version

Duty Cycle: 40/60
Load: 2 Gates

Phase Noise @ 50 MHz

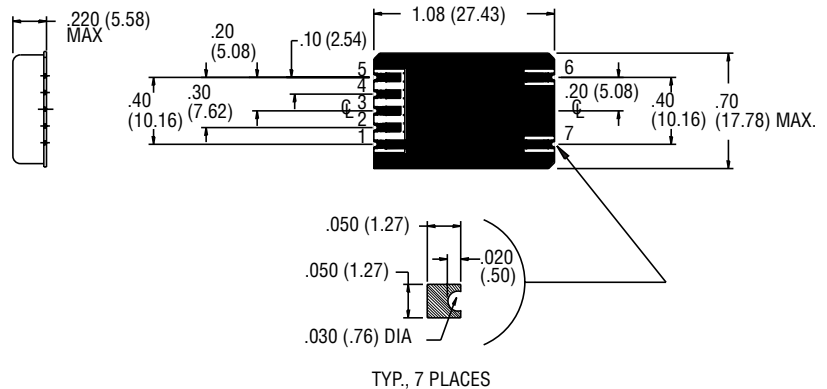
10 Hz: -80 dBc/Hz
100 Hz: -105 dBc/Hz
1 kHz: -130 dBc/Hz
10 kHz: -145 dBc/Hz
≥100 kHz: -145 dBc/Hz



Dimensions are in inches (mm)

PIN CONNECTIONS	
1.	CASE GROUND & SUPPLY RETURN
2.	SUPPLY (+)
3.	RF OUTPUT
4.	N/C
5.	FREQUENCY ADJUST
6.	CASE GROUND
7.	CASE GROUND

Pin numbers shown for ref. only.
Numbers are not marked on unit.



Specifications are subject to change without notice.

Visit our web site at <http://www.piezotech.com>