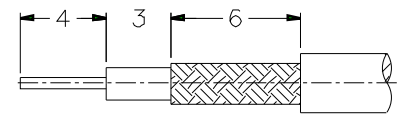
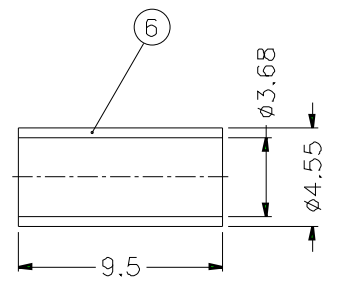
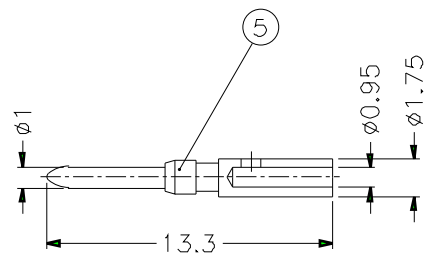
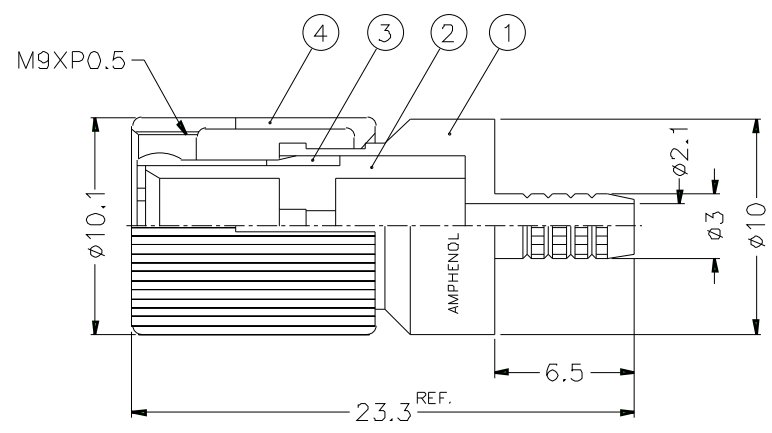


		1		2		3		4		5		6		7		8	
REVISIONS																	
ISS	ZONE	DESCRIPTION\PER REQUEST\DATE															



CABLES: - ST212 (SIRTI TCE2HH2)
 - PIRELLI SIP CT 1320
 - TBR/CAB-SP.01

RECOMMENDED
 CABLE STRIPPING DIM'S



- FERRULE CRIMPING TOOLS P/N
 227-944 (M22520/5-01)
 227-1221-37 HEX: 3.84
- INNER CONTACT CRIMPING TOOL P/N
 413 SP 00 ADJUST TO 5
- CONNECTOR ACCORDING TO NF C 93-570
- PACKAGING IN BAG WITH COMMERCIAL PART NUMBER AND DATE CODE

DIMENSIONS ARE IN MILLIMETERS										PART NO. 156 929 212		<h1>Amphenol</h1> TITLE 1.6/5.6 75Ω STRAIGHT PLUG, CRIMP TYPE DRAWING NO. ITEM NO.						
6	FERRULE	COPPER	NICKEL	1						APPROVED	DATE							10-11-01'
5	CONTACT PIN	BRASS	GOLD	1						CHECKED	DATE							10-11-01'
4	SHELL	BRASS	NICKEL	1						DRAWN	DATE							10-11-01'
3	OUT CONTACT	BRONZE	GOLD	1						FILE NO.								
2	INSULATOR	TEFLON	NATURAL	1														
1	BODY	BRASS	NICKEL	1														
NO.	DESCRIPTION	MATERIAL	FINISH	Q'TY	DRAWING NO.	SCALE	3/1	ISSUE	A	FILE NO.								