

Part/Keyword Search

Products

- Amplifiers
- VCOs
- Limiting Amplifiers
- Switches
- Linearizers
- Limiters
- Analog Attenuators
- Digital Attenuators
- Detectors



Detailed Drawing



Printer Friendly Datasheet

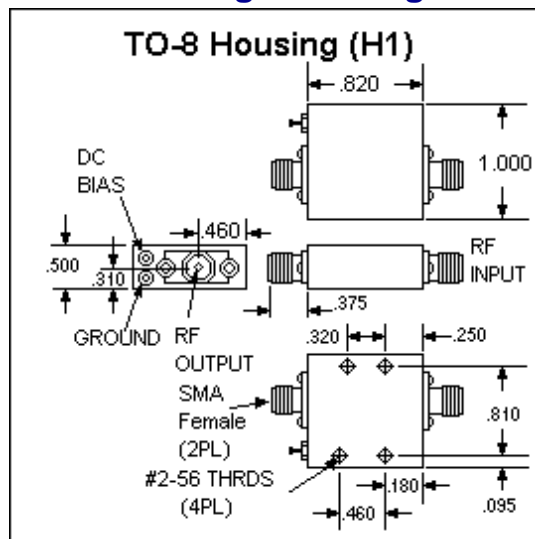
## BX3073 / SX3073\*

\* Part number for additional environmental screening.

### Performance Data

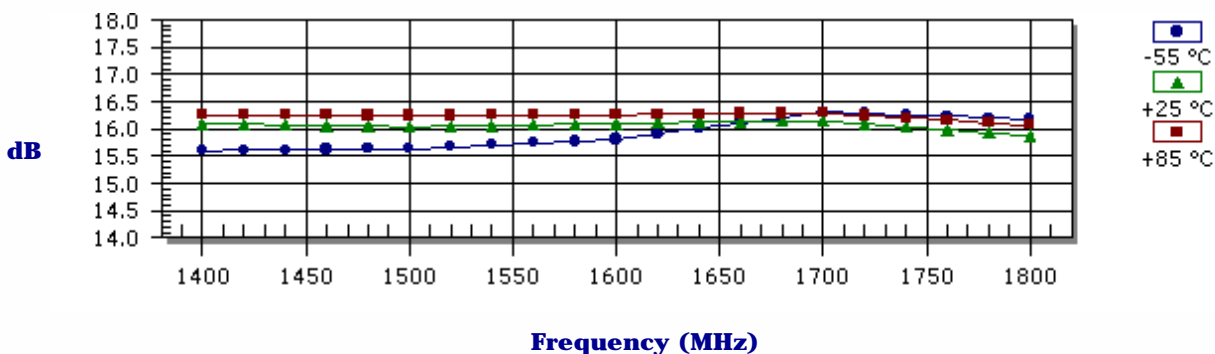
Frequency	1400.0 - 1800.0 MHz
Gain	15.0 dB Typical 14.0 dB Min
Noise Figure	2.5 dB Typical 3.0 dB Max
P <sub>1dB</sub>	17.0 dBm Typical 16.0 dBm Min
3 <sup>rd</sup> Order Intercept	28.0 dBm Typical
2 <sup>nd</sup> Order Intercept	38.0 dBm Typical
VSWR	1.7/2.0 Input Typ/Max 1.7/2.0 Output Typ/Max
Reverse Isolation	-21.0 dB Typical -19.0 dB Min
Power Supply	12.0 Volts 63.0 mA
Operating Temperature	-55.0 - 85.0 °C

### Package Drawing

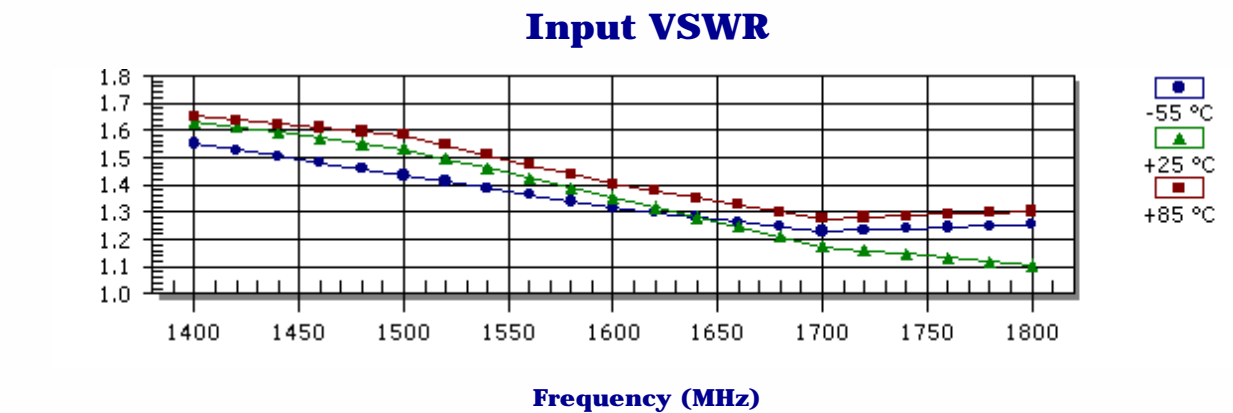
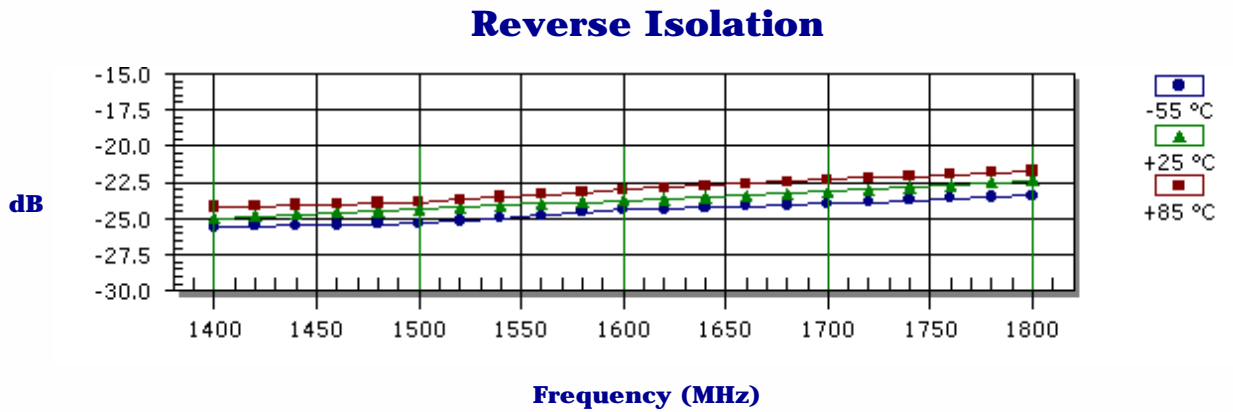
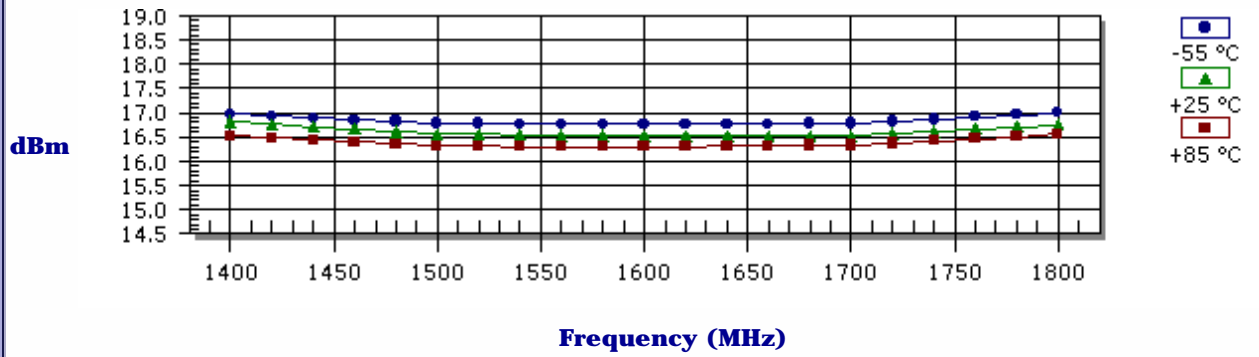
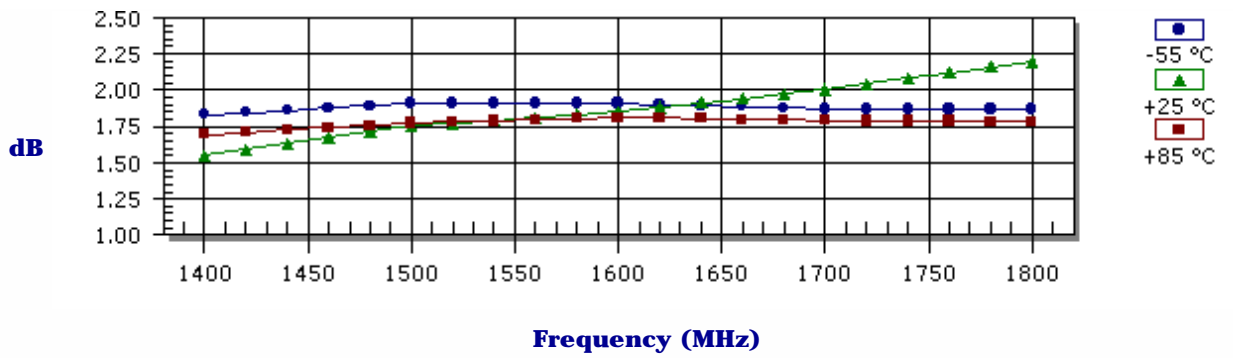


Note: Care should always be taken to effectively ground the case of each unit.

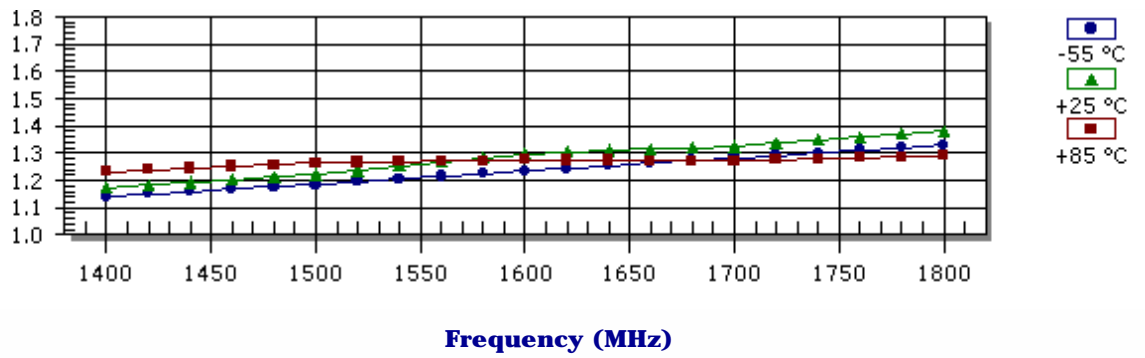
### Gain



### Noise Figure



**Output VSWR**



### Absolute Maximum Conditions

Maximum Operating Temperature	-55.0 - 100.0 °C	Maximum Storage Temperature	-62.0 - 125.0 °C
Maximum Case Temperature	125.0 °C	Maximum Supply Voltage	15.0 Volts
Continuous RF Input Power	13.0 dBm	Short Term RF Input Power (1 minute max)	50.0 mW
Maximum Peak Power (3 µsec max)	0.5 W		

Amplifonix | 2707 Black Lake Place | Philadelphia, PA 19154  
 Tel: 215.464.4000 | FAX: 215.464.4001 | Email: [info@amplifonix.com](mailto:info@amplifonix.com)

# i2 Technologies US, Inc.

## HTML Pages converted to PDF Document

This document contains component information from the manufacturer's website which are not available in a revision controlled document from the manufacturer. To facilitate the addition of these parts into the Electronics Database, we are converting the HTML pages related to that part, from the manufacturer's website into Adobe PDF format. The contents of this document is based on the information provided on the manufacturer's website, therefore the information may have been changed by the manufacturer since this was created.

