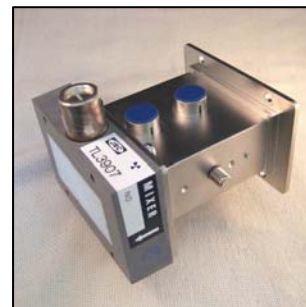


S-band TR Limiter

■ GENERAL DESCRIPTION

TL3907 is a S-band TR Limiter consisting of a TR tube and a diode limiter.



■ RADIOACTIVE MATERIAL

TR tube contains Americium241 (1184kBq).

■ MAXIMUM AND MINIMUM RATINGS(ABSOLUTE)

These ratings cannot necessarily be used simultaneously and no individual ratings should be exceeded.

PARAMETERS	Min	Max	Units
Transmitter power (peak)	—	100	kW
Pulse duration	—	2.0	μs
Duty cycle	—	0.001	—

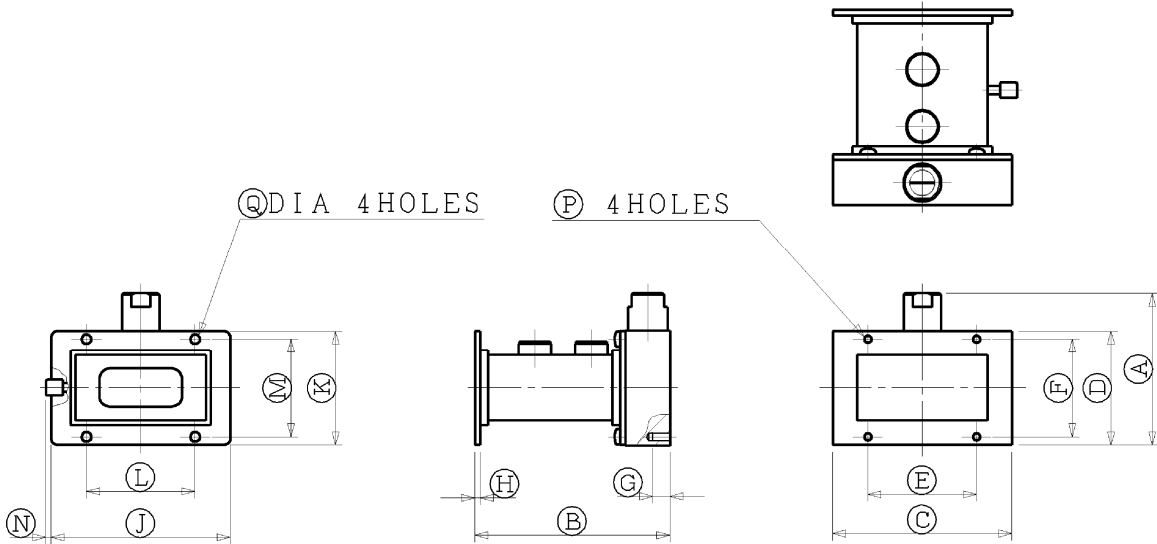
■ ELECTRICAL CHARACTERISTICS

PARAMETERS	Min	Max	Units
Frequency range	2780	2980	MHz
VSWR (note 1, note 2)	—	1.5	—
Insertion loss (note 1, note 3)	—	0.6	dB
Flat leakage power (note 3, note 4)	—	20	mW
Spike leakage energy (note 3, note 4)	—	0.2	erg
Recovery time (note 3, note 5)	—	2.0	μs

Notes

- 1 . Measured at power level 0.1mW CW.
- 2 . Measured at 2780,2880 and 2980 MHz.
- 3 . Measured at 2880 MHz.
- 4 . Measured at p0=100kW, tp1=1.0μs, tp2=0.5μs and 1000pps.
- 5 . Measured at p0=100kW, tp=1.0μs and 1000pps.

■ OUTLINE TL3907



OUTLINE DIMENSIONS

(All dimensions without limits are nominal.)

Unit: mm

Sym- bol	DIMENSION		Sym- bol	DIMENSION	
	Min.	Max.		Min.	Max.
A	—	95.0	J	104.39	105.16
B	113.5	114.5	K	66.29	67.06
C	104.39	105.16	L	63.25	63.75
D	66.29	67.06	M	56.9	57.4
E	63.25	63.75	N	—	6.35
F	56.9	57.4	P	M5 TAP	
G	10.0	—	Q	φ5.5	
H	3.2				