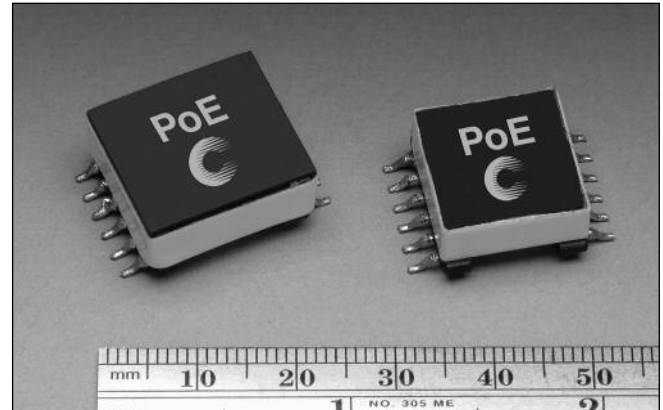


Description

- Versatile design allows multiple output variations
- Flyback topology, 250Khz switching frequency
- Input range from 29.5-60V
- 1500VAC isolation between primary and secondary
- Three power levels 4, 7, and 13watts
- Low leakage inductance
- 11.0 Volt @ 0.10 Amp Feedback Winding
- Ferrite core material



Applications

- For IEEE 802.3af-compliant Power over Ethernet applications
- UPS, VoiP Phone, Wireless LAN Access point, Bluetooth Access point, Network Camera, Building Access Systems
- Retail Point-of-information systems
- Vending/Gaming Machines

Environmental Data

- Storage temperature range: -40°C to +125°C
- Operating ambient temperature range: -40°C to +85°C (range is application specific)
- Solder reflow temperature: +260°C max. for 10 seconds max.

Packaging

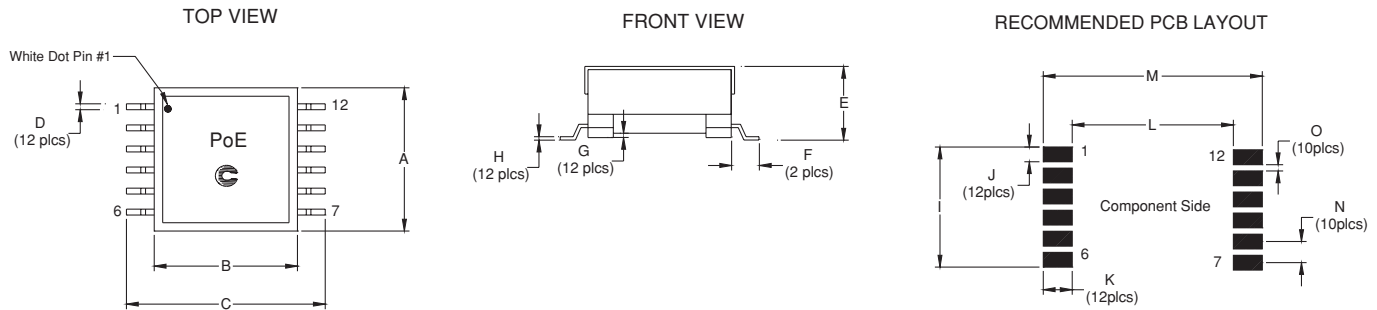
- Packaging Information: 4 and 7 Watts 200 parts per 13" reel, 13 Watts 140 parts per 13" reel

Part Number	Watts	Inductance (uH)	Output	DCR/ PRI (ohms)	DCR/ SEC (ohms)	Leakage Inductance (uH) typ.	Pri Current Pk (Adc)	Turn Ratio		Schematic	Dimensions
								Schematic 1: Pins pri(3-1):fb(5-6):v1(12-7):v2(11-8):v3(10-9)	Schematic 2: Pins pri(3-1):fb(5-6):v1(12-10):v2(11-9)		
PoE4W3x3.3-R	4	200	(3)x3.3V@0.45A	0.500	0.07	2.75	0.65	1 : 0.52 : 0.16 : 0.16 : 0.16 +/-1%		1	Size 1
PoE4W3x5.0-R	4	200	(3)x5.0V@0.30A	0.500	0.27	2.50	0.65	1 : 0.52 : 0.26 : 0.26 : 0.26 +/-1%		1	Size 1
PoE4W2x12-R	4	200	(2)x12.0V@0.20A	0.500	0.740	1.40	0.65	1 : 0.52 : 0.60 : 0.60 +/-1%		2	Size 1
PoE7W3x3.3-R	7	100	(3)x3.3V@0.75A	0.275	0.03	1.00	1.00	1 : 0.529 : 0.176 : 0.176 : 0.176 +/-1%		1	Size 1
PoE7W3x5.0-R	7	100	(3)x5.0V@0.50A	0.275	0.095	1.00	1.00	1 : 0.529 : 0.265 : 0.265 : 0.265 +/-1%		1	Size 1
PoE7W2x12-R	7	100	(2)x12.0V@0.30A	0.275	0.250	1.00	1.00	1 : 0.529 : 0.588 : 0.588 +/-1%		2	Size 1
PoE13W3x3.3-R	13	100	(3)x3.3V@1.35A	0.250	0.032	1.50	1.60	1 : 0.529 : 0.176 : 0.176 : 0.176 +/-3%		1	Size 2
PoE13W3x5.0-R	13	100	(3)x5.0V@0.90A	0.250	0.075	1.20	1.60	1 : 0.529 : 0.265 : 0.265 : 0.265 +/-3%		1	Size 2
PoE13W2x12-R	13	100	(2)x12.0V@0.60A	0.250	0.280	1.00	1.70	1 : 0.529 : 0.647 : 0.647 +/-3%		2	Size 2
Part Number	Watts	Inductance (uH)	Output	DCR/ PRI (ohms)	DCR/ SEC V1/V2/V3	Leakage Inductance (uH) typ.	Pri Current Pk (Adc)	Turn Ratio		Schematic	Dimensions
								Schematic 2: Pins pri(3-1):fb(5-6):v1(12-10):v2(11-9)	Schematic 3: Pins pri(1-3):fb(5-6):v3(12-11):v2(8-7)		
PoE13W3VERS-R	13	100	V1:7.0V@1.1A, V2:(1)x3.3V@1.1A, V3:1.8V@1.1A	0.250	0.025/0.042/0.085	1.00	1.70	1 : 0.529 : 0.350 : 0.176 : 0.088 +/-3%		3	Size 2
PoE13W2VERS-R	13	100	V1:5.0V@1.6A, V2:3.3V@1.6A	0.250	0.023/0.038/na	1.20	1.70	1 : 0.529 : 0.265 : 0.176 +/-3%		2	Size 2

1) Test Parameters: 100kHz, 0.100 Vrms, 0.0Adc
2) DCR limits maximum @ 20°C

3) Leakage Inductance 200kHz, 0.01Vrms, 0.0Adc
4) Feedback DCR 1.0 Ohms maximum @20°C

Mechanical Diagrams

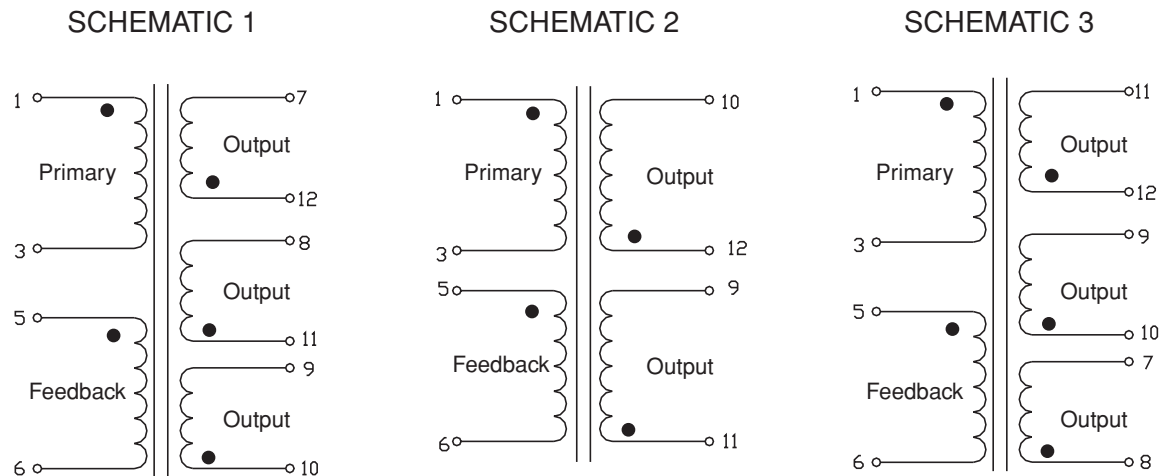


DIMENSIONS

	A mm max.	B mm ref.	C mm max.	D mm ref.	E mm max.	F mm ref.	G mm ref.	H mm ref.	I mm ref.	J mm	K mm	L mm ref.	M mm max.	N mm	O mm
Size 1	17.1	16.0	22.3	0.7	8.4	3.0	0.1	0.4	14.49	1.79	3.43	16.88	23.74	2.54	0.75
Size 2	18.0	18.0	24.6	0.7	10.0	3.3	0.1	0.4	14.25	1.75	3.43	19.14	26.0	2.5	0.75

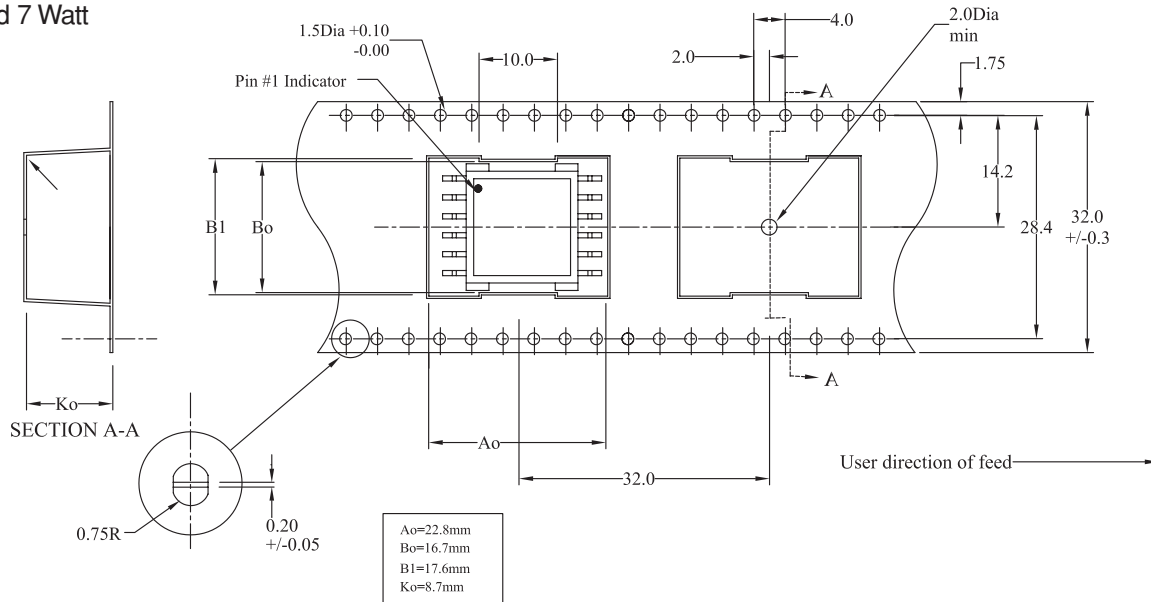
- 1) Tolerances A - H are $\pm 0.25\text{mm}$ unless specified otherwise.
- 2) Tolerances I - O are $\pm 0.10\text{mm}$ unless specified otherwise
- 2) All soldering surfaces are coplanar to within $\pm 0.102\text{mm}$.

Schematic Diagrams



Mechanical Diagrams

PoE 4 and 7 Watt



PoE 13 W

