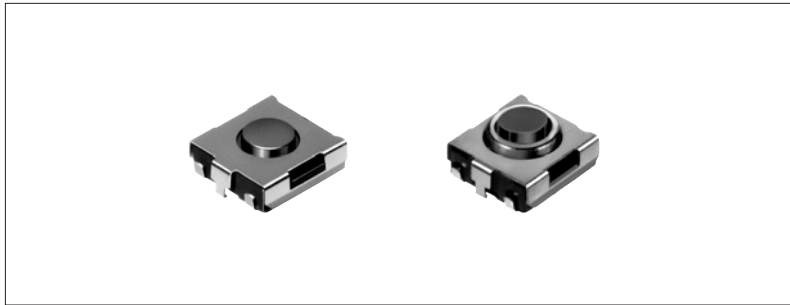


6.2×6.5mm TACT Switch (SMD)

SKHU Series

Wide varieties such dust protection type suitable for high density mounting.



Car Use

Features

- 6.2×6.5mm dimension with 2.5 to 3.1mm height is suitable for high density mounting.
- Reflow solderable.
- Available with anti-ESD ground terminal.
- Packaged with a 12mm wide embossed taping.
- Dust protection type is available to have advantage in dusty environment.

Applications

- For operating various electronic devices such as audio devices, office equipment, communication devices, measuring instruments, TVs, video recorders, automotive sets, etc.

Products Line

Vertical Type

Products No.	Operating force	Operating direction	Travel (mm)	Rating (max.)	Operating life (5mA 5V DC)	Initial contact resistance	Stem color	Stem height	Drawing No.
SKHUABE010	0.98N	Vertical	0.25	50mA 12V DC	300,000 cycles	100mΩ max.	Green	h=2.5mm	1
SKHUADE010	1.57N						Brown		
SKHUAFE010	2.55N				Red		100,000 cycles		

With Ground Terminal Type

Products No.	Operating force	Operating direction	Travel (mm)	Rating (max.)	Operating life (5mA 5V DC)	Initial contact resistance	Stem color	Stem height	Drawing No.
SKHUPBE010	0.98N	Vertical	0.25	50mA 12V DC	300,000 cycles	100mΩ max.	Green	h=2.5mm	2
SKHUPDE010	1.57N						Brown		
SKHUPFE010	2.55N				Red		100,000 cycles		

Dust-proof Type

Products No.	Operating force	Operating direction	Travel (mm)	Rating (max.)	Operating life (5mA 5V DC)	Initial contact resistance	Stem color	Stem height	Drawing No.
SKHUBBE010	1.57N	Vertical	0.25	50mA 12V DC	50,000 cycles	100mΩ max.	Brown	h=3.1mm	3

Dust-proof and With Ground Terminal Type

Products No.	Operating force	Operating direction	Travel (mm)	Rating (max.)	Operating life (5mA 5V DC)	Initial contact resistance	Stem color	Stem height	Drawing No.
SKHUQBE010	1.57N	Vertical	0.25	50mA 12V DC	50,000 cycles	100mΩ max.	Brown	h=3.1mm	4
SKHUQEE010	2.55N						Red		

Power

Push

Slide

Rotary

Encoders

Detector

Dual-in-line
Package Type

Multi Control
Devices

TACT

Custom-
Products

Sharp
Feeling

Soft
Feeling

Snap-in
Type

Surface
Mount Type

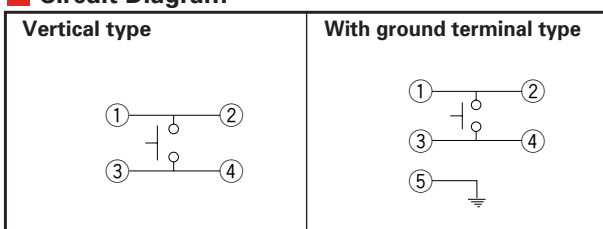
Radial
Type

■ Dimensions

Unit:mm

No.	Style	PC board land dimensions (Viewed from switch mounting face)
1	Vertical type 	
2	With ground terminal type 	
3	Dust-proof type 	
4	Dust-proof and with ground terminal type 	

■ Circuit Diagram



For detailed specifications, see P.415
 For soldering conditions, see P.416
 For specifications for the taping package, see P.418

Products Specifications

Items		Series	Sharp feeling type	Soft feeling type
		-20°C to +70°C		
Operating temperature range			-30°C to +85°C SKRM/RW	-30°C to +80°C SKPG
			-30°C to +90°C SKRA/RG/RP	-40°C to +90°C SKPF/PL/PM/PN
Rating (max.)			50mA 12V DC SKRP : 50mA 16V DC	5mA 12V DC SKPL/PM/PN : 50mA 16V DC
Rating (min.)		10 μ A 1V DC		
Electrical performance	Insulation resistance	100M Ω min. 100V DC SKEY/PD : 50M Ω min. 100V DC		
	Voltage proof	250V AC for 1 min. SKRB/RH/RM/RW/RR/EY/PD : 100V AC for 1min.		
Durability	Vibration	10 to 55 to 10Hz/min., the amplitude is 1.5mm for all the frequencies, in the 3 direction of X, Y and Z for 2 hours respectively		
	Lifetime	Shall be in accordance with individual specifications.		
Environmental performance	Cold	-30 \pm 2°C for 96h		
	Dry heat	80 \pm 2°C for 96h		
	Damp heat	60 \pm 2°C, 90 to 95%RH for 96h		

Power

Push

Slide

Rotary

Encoders

Detector

Dual-in-line
Package TypeMulti Control
Devices

TACT

Custom-
ProductsSharp
FeelingSoft
FeelingSnap-in
TypeSurface
Mount TypeRadial
Type

Note

We can raise the working temperature range for in-vehicle applications upon request. Contact us if you have any requirements of this kind.

Specifications of LED (SKHJ)

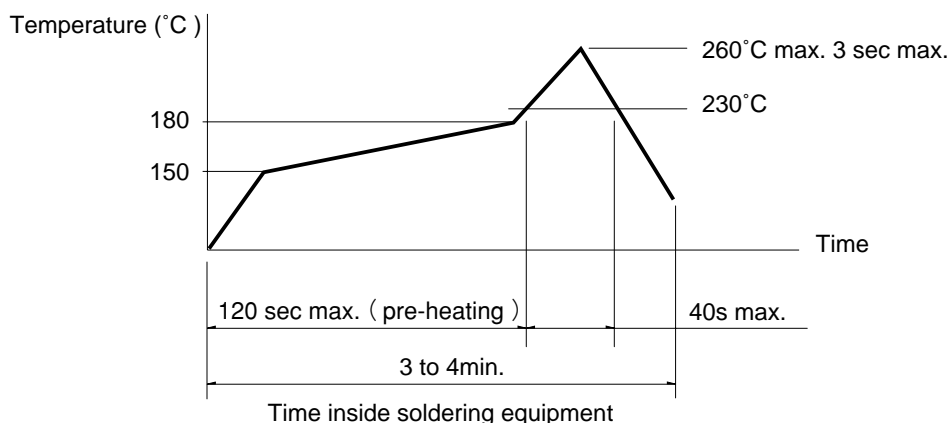
Color of light	Power dissipation	Forward pulse peak current	Forward current	Reverse voltage	Forward voltage	Reverse current	Peak emission wave length	Spectral line half width	Luminous intensity
	P (mW)	IFP (mA)	IFDC (mA)	VR (V)	VF (V) IF=10mA	IR (μ A) VR=4V	λ peak (nm) IF=10mA	$\Delta \lambda$ (nm) IF=10mA	IV (mcd) IF=10mA
Red	40	80	15	4	2.7 max. 2.05TYP	5 max.	700 TYP	100 TYP	0.4min. 1.0 TYP
Pure green									0.8min. 2.0 TYP
Amber									0.4min. 1.0 TYP
Orange (High brightness)				3	2.7 max. 2.0 TYP	10 max.	630 TYP	40 TYP	1.5min. 4.0 TYP
Green (High brightness)									4

Soldering Conditions

Condition for Reflow

Available for Surface Mount Type. (Except SKHM, SKHU, SKRM, SKRR Series)

1. Heating method: Double heating method with infrared heater.
2. Temperature measurement: Thermocouple 0.1 to 0.2 φ CA (K) or CC (T) at soldering portion (copper foil surface). A heat resisting tape should be used for fixed measurement.
3. Temperature profile



Notes

1. The condition mentioned above is the temperature on the mounting surface of a PC board. There are cases where the PC board's temperature greatly differs from that of the switch, depending on the PC board's material, size, thickness, etc. The above-stated conditions shall also apply to switch surface temperatures.
2. Soldering conditions differ depending on reflow soldering machines. You are requested to verify the soldering conditions thoroughly beforehand.

Conditions for Auto-dip

Available for Snap-in Type and Radial Type
(Except SKHJ, SKHL, SKQC, SKQJ, SKQK, SKEG series)

Items	Condition
Flux built-up	Mounting surface should not be coated with flux
Preheating temperature	Ambient temperature of the soldered surface of PC board. 100°C max.
Preheating time	60s max.
Soldering temperature	260°C max.
Continuous dipping time	5s max.
Number of soldering	2times max.

Notes

1. Consult with us for TACT switch washing conditions.
2. Prevent flux penetration from the top side of the TACT switch.
3. Switch terminals and a PC board should not be coated with flux prior to soldering.
4. The second soldering should be done after the switch returns to normal temperature.
5. Use the flux with a specific gravity of at least 0.82.
(EC-19s-8 by TAMURA Corporation, or their equivalents.)

Manual Soldering

Available for Manual Soldering Type

Items	Condition
Soldering temperature	350°C max.
Continuous soldering time	3s max.

- Power
- Push
- Slide
- Rotary
- Encoders
- Detector
- Dual-in-line Package Type
- Multi Control Devices
- TACT**
- Custom-Products

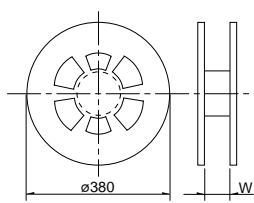
- Sharp Feeling
- Soft Feeling
- Snap-in Type
- Surface Mount Type
- Radial Type

Specification of Embossed Taping Package

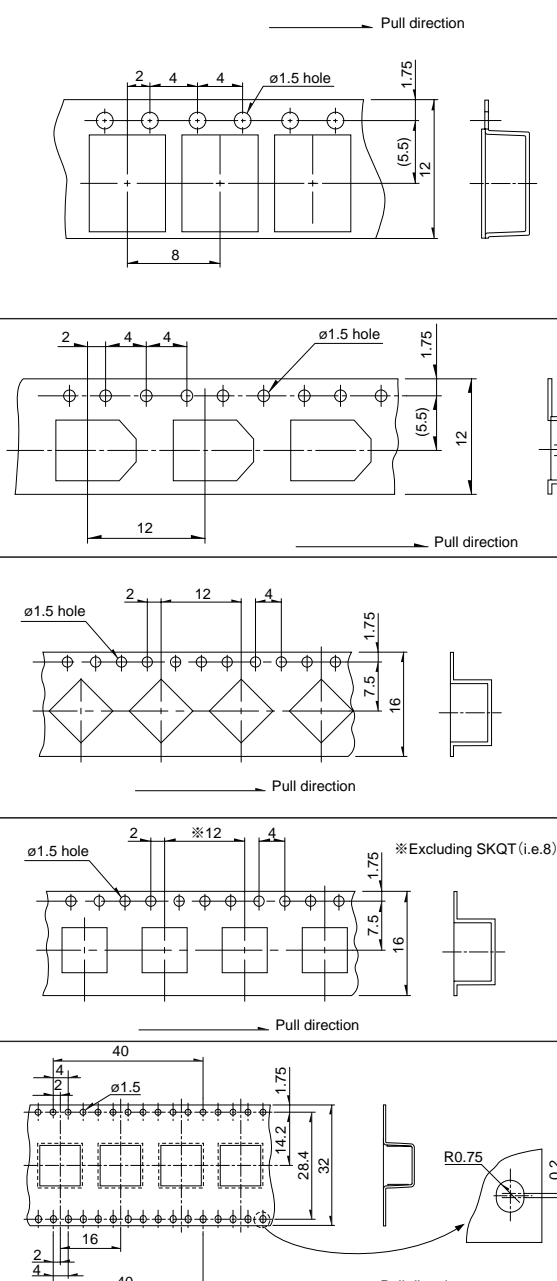
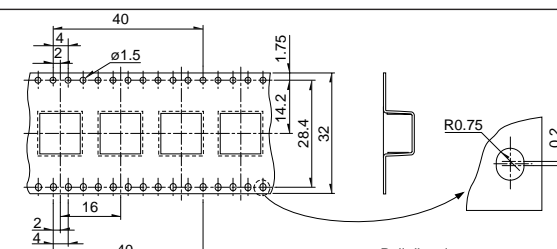
Taping Packaging for Auto-insertion

Reel Size

Unit:mm

Plastic Reel 	Applicable series	W
	SKHM, SKHU, SKQG, SKQL, SKQM, SKQR, SKQY, SKRAAK, SKRAAL, SKRB, SKRE, SKRK, SKRM, SKRN, SKRP, SKRT, SKRW, SKPM	13.5
	SKQT, SKRAAM, SKRAAQ, SKRH, SKRR, SKRV, SKPG, SKPN	17.5
	SKQUBA, SKQUBB	33.5

Unit:mm

Applicable series	Qty/reel (pcs.) (Minimum packing unit)	Tape dimensions
SKQM, SKPM	2,000	
SKHM, SKHU, SKQY, SKRT, SKRAAK, SKRAAL	3,000	
SKQG	5,000 (Without stem type) 4,000 (With stem type)	
SKRP	4,000	
SKRKAE, SKRKAH	4,500	
SKQR, SKRB SKRM, SKRW	10,000	
SKRE, SKRN, SKRKAG	5,000	
SKQL	3,000	
SKRH	1,300	
SKRV	1,500	
SKPG	1,200	※Excluding SKQT (i.e.8)
SKRAAM, SKRAAQ	1,400	
SKQT	3,000	
SKRR	7,000	
SKPN	1,100	
SKQUBA	750	
SKQUBB	600	

Note

Consult with us for a ϕ 330 mm diameter reel.