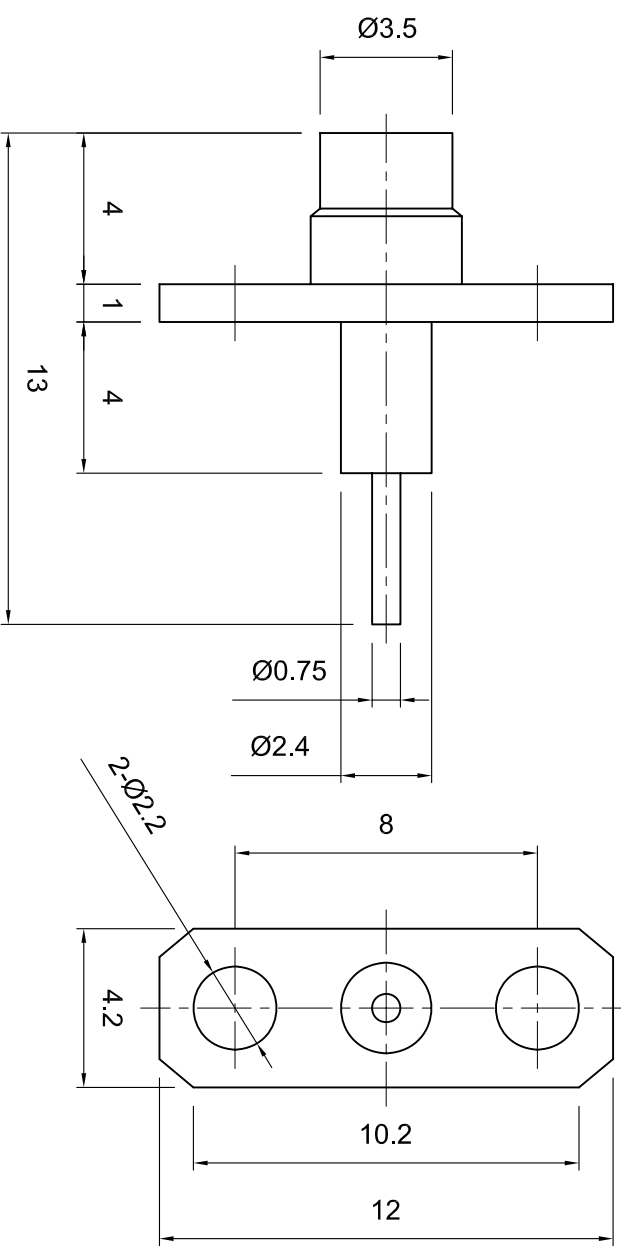



Tolerances 1-20=+/-0.2 20-30=+/-0.3 30-40=+/-0.4 40-50=+/-0.5 50-100=+/-0.75 100-300=+/-1.5 Angles=+/-1	Revisions Description/Approved/Date		Approved M.H.	Date
	Checked M.H.		Checked M.H.	Date 06/17/04
Dimensions are in Millimeters	NOTES (plating thickness in microinches):			
	1. Per QQ-B-626	5. Per MIL-P-19488	6. Per ZZ-R-765	9. Nickel pl. 100 min. over copper strike
	2. Per QQ-S-764	7. Per WW-1-799	8. Gold pl. 5 min. over nickel pl. 50 min. over copper strike	10. Gold pl. 30 min. over nickel pl. 50 min. over copper strike
	3. Per QQ-C-530	4. Per QQ-B-750		



ITEM	MATERIAL	FINISH	 Lighthouse Technologies, Inc. 5640 Keamy Mesa Road, Suite N San Diego, California 92111 Part Number: LTI-MCSF92DNFGT		
Connector Body	Brass, Note 1	Gold, Note 8	Description MMCX panel mount (Narrow flange) jack with extended dielectric.		
Center Contact: Female	BeCu, Note 3	Gold, Note 11			
Insulation	Teflon, Note 5	None			
Ferrule	--	--			
Gasket	--	--			
Hex Nut	--	--	Elongated conductor. Gold plated brass body. Teflon dielectric.		
Lock Washer	--	--	Scale 5:1 Drawing No. File Name MCSF92DNFGT		