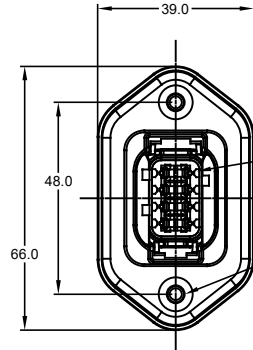
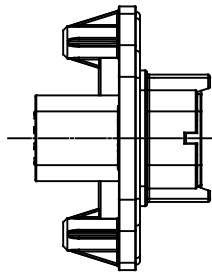
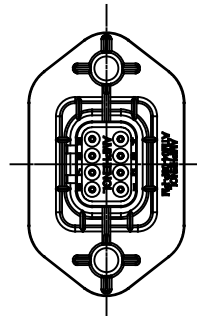
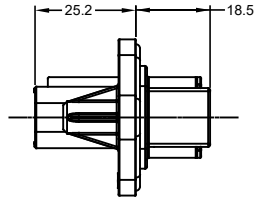
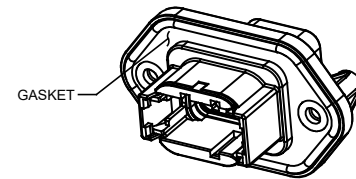
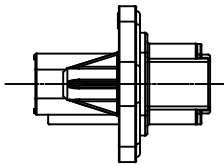


MOUNTING PLATE SIZE



REQUIRES CONTACT RETENTION WEDGE AW8P

2X Ø4.0, 16.4 DP FROM MATING SURFACE
RECOMMENDED ATTACHMENT OPTIONS:
1. HEX WASHER HEAD SHEETMETAL SCREW, #10, 1/2" LONG, HEX SIZE 5/16".
2. SELF THREAD SCREW FOR PLASTIC SUCH AS ST 4.8



NOTES: UNLESS OTHERWISE SPECIFIED

1. MATERIAL:
 - HOUSING: THERMOPLASTIC; COLOR: BLACK
 - END CAP: THERMOPLASTIC; COLOR: BLACK
 - STRAIN RELIEF CAP: THERMOPLASTIC; COLOR: GRAY
 - INSERT: THERMOPLASTIC; COLOR: PER KEY OPTION
 - SEALS: SILICONE RUBBER; COLOR: RED
2. MODIFICATIONS: FLANGE, GASKET, END CAP (OPT), STRAIN RELIEF CAP (OPT)
3. SPECIFICATIONS:
 - 3.1 CURRENT RATING: 13 AMPS
 - 3.2 OPERATING TEMPERATURE: -55°C TO +125°C
 - 3.3 DIELECTRIC WITHSTANDING VOLTAGE: LESS THAN 2 MILLIAMPS CURRENT LEAKAGE @ 1500 VOLTS AC.
 - 3.4 INSULATION RESISTANCE: 1000 MEGOHMS MIN @ 25°C.
 - 3.5 MOISTURE RESISTANCE: IP67 (MATED CONDITION)
 - 3.6 MATING CYCLE DURABILITY: 100 CYCLES
 - 3.7 RoHS COMPLIANT
4. MATING PART: ATM06-08SX* PLUG
(X = A,B,C,D KEYS; * = MODIFICATIONS AND COLORS)
5. ALL DIMENSIONS ARE FOR REFERENCE USE ONLY.

CONTACT SIZE AND REAR SEAL WIRE RANGE:

CONTACT SIZE	MIN. INSUL O.D.	MAX. INSUL O.D.	TYPICAL WIRE RANGE
20	1.35 mm (.053 in)	3.05 mm (.120 in)	16 - 22 AWG

REVISIONS					
REV	ECO	DESCRIPTION	DATE	BY	APPR
A1	-	RELEASE	6JUL2018	JAH	

TITLE: RECEPTACLE, 8 PIN, ATM SERIES, W/FLANGE
DWG NO.: ATM04-08PX-PM1X
REV: A1
SH: 1
OF: 2

SEE SHEET 2 FOR KEYS		PART NUMBER		DESCRIPTION		ITEM																																			
<table border="1"> <thead> <tr> <th>QUANTITY</th> <th colspan="6">MATERIALS LIST</th> </tr> </thead> <tbody> <tr> <td colspan="7"> UNLESS OTHERWISE SPECIFIED: 1) All dimensions are in metric(mm). 2) Tolerances are as follows: 1 PL DEC ±0.30 Fractions ±1/64 2 PL DEC ±0.15 Angles ±1° 3 PL DEC ±0.08 </td> </tr> <tr> <td colspan="2">MATERIAL SPECIFICATIONS:</td> <td>SIGNATURES</td> <td>DATE</td> <td colspan="3"> Amphenol Sine Systems - www.amphenol-sine.com 44724 Morley Drive Clinton Township, MI 48036 </td> </tr> <tr> <td colspan="2">PROCESS SPECIFICATIONS:</td> <td>CUSTOMER:</td> <td colspan="4"> RECEPTACLE, 8 PIN, ATM SERIES, W/FLANGE, GASKET </td> </tr> <tr> <td colspan="2">NEXT ASSY:</td> <td colspan="2"> THIS DRAWING IS SUPPLIED FOR INFORMATION ONLY. DESIGN FEATURES, SPECIFICATIONS AND PERFORMANCE DATA SHOWN HEREON ARE THE PROPERTY OF THE AMPHENOL CORPORATION. NO RIGHTS OF REPRODUCTION ARE IMPLIED. ALL DIMENSIONS ARE SUBJECT TO NORMAL MANUFACTURING VARIATIONS. </td> <td> SIZE: B TYPE: C- SCALE: NONE </td> <td> DWG NO.: ATM04-08PX-PM1X </td> <td> REVISION: A1 </td> </tr> </tbody> </table>							QUANTITY	MATERIALS LIST						UNLESS OTHERWISE SPECIFIED: 1) All dimensions are in metric(mm). 2) Tolerances are as follows: 1 PL DEC ±0.30 Fractions ±1/64 2 PL DEC ±0.15 Angles ±1° 3 PL DEC ±0.08							MATERIAL SPECIFICATIONS:		SIGNATURES	DATE	Amphenol Sine Systems - www.amphenol-sine.com 44724 Morley Drive Clinton Township, MI 48036			PROCESS SPECIFICATIONS:		CUSTOMER:	RECEPTACLE, 8 PIN, ATM SERIES, W/FLANGE, GASKET				NEXT ASSY:		THIS DRAWING IS SUPPLIED FOR INFORMATION ONLY. DESIGN FEATURES, SPECIFICATIONS AND PERFORMANCE DATA SHOWN HEREON ARE THE PROPERTY OF THE AMPHENOL CORPORATION. NO RIGHTS OF REPRODUCTION ARE IMPLIED. ALL DIMENSIONS ARE SUBJECT TO NORMAL MANUFACTURING VARIATIONS.		SIZE: B TYPE: C- SCALE: NONE	DWG NO.: ATM04-08PX-PM1X	REVISION: A1
QUANTITY	MATERIALS LIST																																								
UNLESS OTHERWISE SPECIFIED: 1) All dimensions are in metric(mm). 2) Tolerances are as follows: 1 PL DEC ±0.30 Fractions ±1/64 2 PL DEC ±0.15 Angles ±1° 3 PL DEC ±0.08																																									
MATERIAL SPECIFICATIONS:		SIGNATURES	DATE	Amphenol Sine Systems - www.amphenol-sine.com 44724 Morley Drive Clinton Township, MI 48036																																					
PROCESS SPECIFICATIONS:		CUSTOMER:	RECEPTACLE, 8 PIN, ATM SERIES, W/FLANGE, GASKET																																						
NEXT ASSY:		THIS DRAWING IS SUPPLIED FOR INFORMATION ONLY. DESIGN FEATURES, SPECIFICATIONS AND PERFORMANCE DATA SHOWN HEREON ARE THE PROPERTY OF THE AMPHENOL CORPORATION. NO RIGHTS OF REPRODUCTION ARE IMPLIED. ALL DIMENSIONS ARE SUBJECT TO NORMAL MANUFACTURING VARIATIONS.		SIZE: B TYPE: C- SCALE: NONE	DWG NO.: ATM04-08PX-PM1X	REVISION: A1																																			
				SHEET 1 OF 2																																					

REVISIONS					
REV	ECO	DESCRIPTION	DATE	BY	APPR
A1	-	RELEASE	6JUL2018	JAH	

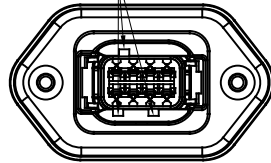
P/N ATM04-08PA-PM1X
KEY-A CONFIGURATION
INSERT COLOR: GREY

P/N ATM04-08PB-PM1X
KEY-B CONFIGURATION
INSERT COLOR: BLACK

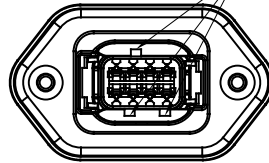
P/N ATM04-08PC-PM1X
KEY-C CONFIGURATION
INSERT COLOR: GREEN

P/N ATM04-08PD-PM1X
KEY-D CONFIGURATION
INSERT COLOR: BROWN

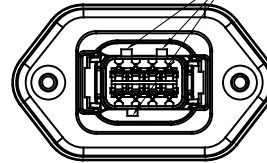
KEYWAY (3) PLACES



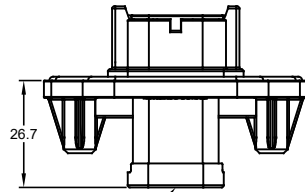
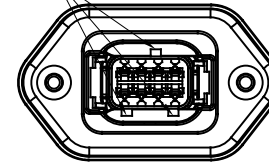
KEYWAY (3) PLACES



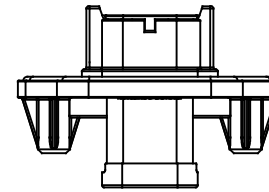
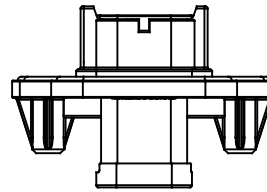
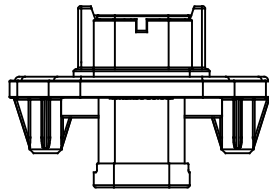
KEYWAY (3) PLACES



KEYWAY (3) PLACES



END CAP SHOWN
IN THESE VIEWS

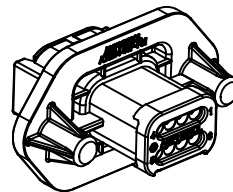


KEY-A CONFIGURATION		
END CAP	STRAIN RELIEF CAP	PART NUMBER
NO	NO	ATM04-08PA-PM11
YES	NO	ATM04-08PA-PM13
NO	YES	ATM04-08PA-PM15

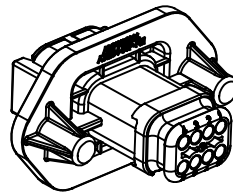
KEY-B CONFIGURATION		
END CAP	STRAIN RELIEF CAP	PART NUMBER
NO	NO	ATM04-08PB-PM11
YES	NO	ATM04-08PB-PM13
NO	YES	ATM04-08PB-PM15

KEY-C CONFIGURATION		
END CAP	STRAIN RELIEF CAP	PART NUMBER
NO	NO	ATM04-08PC-PM11
YES	NO	ATM04-08PC-PM13
NO	YES	ATM04-08PC-PM15

KEY-D CONFIGURATION		
END CAP	STRAIN RELIEF CAP	PART NUMBER
NO	NO	ATM04-08PD-PM11
YES	NO	ATM04-08PD-PM13
NO	YES	ATM04-08PD-PM15



SHOWN WITH
END CAP



SHOWN WITH
STRAIN RELIEF CAP

QUANTITY	PART NUMBER	DESCRIPTION	ITEM
MATERIALS LIST			
UNLESS OTHERWISE SPECIFIED 1) All dimensions are in metric (mm). 2) Tolerances are as follows: 1 PL DEC ±0.30 Fractions ±1/64 2 PL DEC ±0.15 Angles ±1° 3 PL DEC ±0.08 3) Note reference =		SIGNATURES DATE DRAWN: J. HEAD 15MAR18 CHECKED: ENGINEER: APPROVAL:	Amphenol Sine Systems - www.amphenol-sine.com 44724 Morley Drive Clinton Township, MI 48036
MATERIAL SPECIFICATIONS: PROCESS SPECIFICATIONS: NEXT ASSY:		THIS DRAWING IS SUPPLIED FOR INFORMATION ONLY. DESIGN FEATURES, SPECIFICATIONS AND PERFORMANCE DATA SHOWN HEREON ARE THE PROPERTY OF THE AMPHENOL CORPORATION. NO RIGHTS OF REPRODUCTION ARE IMPLIED. ALL DIMENSIONS ARE SUBJECT TO NORMAL MANUFACTURING VARIATIONS.	RECEPTACLE, 8 PIN, ATM SERIES, W/FLANGE, GASKET SIZE: TYPE DWG NO. REVISION B C- ATM04-08PX-PM1X A1 SCALE: NONE SHEET 2 OF 2

TITLE: RECEPTACLE, 8 PIN, ATM SERIES, W/FLANGE
 DWG NO.: ATM04-08PX-PM1XX
 REV: A1
 SH: 2
 OF: 2