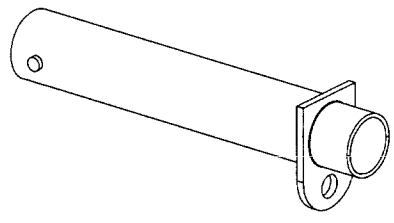


DATA CONTAINED IN THIS DOCUMENT IS PROPRIETARY TO TROMPETER ELECTRONICS, INC. AND SHALL NOT BE DISCLOSED, COPIED OR USED IN ANY MANNER WITHOUT THE EXPRESS WRITTEN PERMISSION.

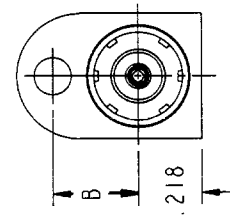
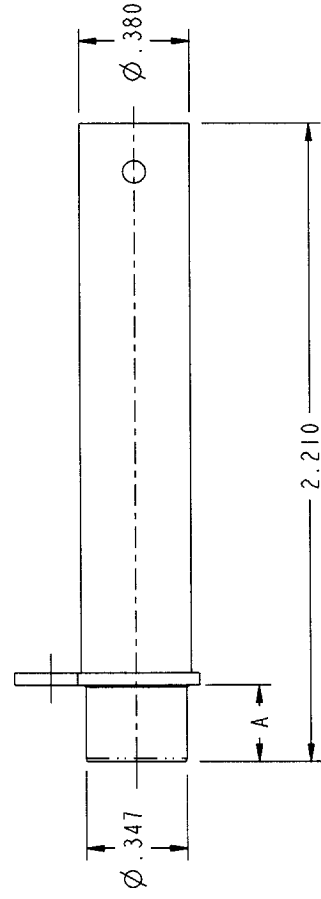
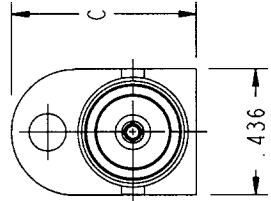
REVISIONS		REVISED PER	ECO #	DATE	APPROVED
H		REVISED PER	ECO #15007	4-8-03	JAM.

P/N	A	B	C
J11B 1-0522	.264	.295	.638
J11MW 1-0522-1	.375	.375	.728
J11B SPL 1-0522-2	.264	.295	.638

**RED INDICATES ORIGINAL**



SCALE 1/1



		TITLE: J11B/J11MW	
INTERPRET DRAWING PER MIL-STD-100 DIMENSIONS ARE IN INCHES AND INCLUDE FINISH THICKNESS UNLESS OTHERWISE SPECIFIED.		TOL: UNLESS SPECIFIED: .XX ± .02 .XXX ± .010 ANGLE ± 1°	
DRN: AAH CHK: [Signature] QCAL: [Signature] MANT: [Signature]	4-3-03 4-3-03 4/8/03 4/20/03	SIZE: A CAGE CODE: 14949 DRAWING NO.: 1-0522 REV.: H	DATE: 5/26/95 SHEET: 1C
DO NOT SCALE DWG		SCALE: 2/1	

- 3 CUSTOM PART, DO NOT MARK/STAMP TEI LOGO OR P/N
2. BETWEEN SERIES ADAPTER 75 Ω COAXIAL AT&T TYPE MINIATURE PATCH JACK TO FEMALE 75 Ω BNC RECEPTACLE
1. FINISH: TFS-1A (NICKEL)

NOTES: UNLESS OTHERWISE SPECIFIED.

NEXT ASSY