

OSI SPLIT-CORE CURRENT TRANSFORMERS MODEL CTY-

FEATURES

- 0.5% Linearity
- Split-core
- AC Outputs 0.1A, 1A, 5A, 0.333V, 1V, 5V

Now with UL
Recognition



APPLICATIONS

- For use with OSI Watt transducers
- For use with OSI Current transducers
- Ideal for Ammeters, Wattmeters

| INPUT AC AMPS | STANDARD OUTPUTS MODEL CTY- | | | | | | SENSOR SIZE |
|------------------|-----------------------------|---------|---------|------------|----------|----------|----------------|
| | 0-0.1Aac* | 0-1Aac | 0-5Aac | 0-0.333Vac | 0-1Vac | 0-5Vac | |
| 0-50 | 050A-.1 | 050A-1 | NA | 050A-.3V | 050A-1V | 050A-5V | A |
| 0-100 | 100A-.1 | 100A-1 | NA | 100A-.3V | 100A-1V | 100A-5V | A |
| 0-200 | 200A-.1 | 200A-1 | NA | 200A-.3V | 200A-1V | 200A-5V | A |
| 0-100 | 100B-.1 | 100B-1 | 100B-5 | 100B-.3V | 100B-1V | 100B-5V | B |
| 0-200 | 200B-.1 | 200B-1 | 200B-5 | 200B-.3V | 200B-1V | 200B-5V | B |
| 0-300 | 300B-.1 | 300B-1 | 300B-5 | 300B-.3V | 300B-1V | 300B-5V | B |
| 0-400 | 400B-.1 | 400B-1 | 400B-5 | 400B-.3V | 400B-1V | 400B-5V | B |
| 0-500 | 500B-.1 | 500B-1 | 500B-5 | 500B-.3V | 500B-1V | 500B-5V | B |
| 0-600 | 600B-.1 | 600B-1 | 600B-5 | 600B-.3V | 600B-1V | 600B-5V | B |
| 0-800 | 800B-.1 | 800B-1 | 800B-5 | 800B-.3V | 800B-1V | 800B-5V | B |
| 0-800 | 800C-.1 | 800C-1 | 800C-5 | 800C-.3V | 800C-1V | 800C-5V | C** |
| 0-1000 | 1000C-.1 | 1000C-1 | 1000C-5 | 1000C-.3V | 1000C-1V | 1000C-5V | C** |
| 0-1200 | 1200C-.1 | 1200C-1 | 1200C-5 | 1200C-.3V | 1200C-1V | 1200C-5V | C** |
| 0-1200 | 1200D-.1 | 1200D-1 | 1200D-5 | 1200D-.3V | 1200D-1V | 1200D-5V | D |
| 0-1500 | 1500C-.1 | 1500C-1 | 1500C-5 | 1500C-.3V | 1500C-1V | 1500C-5V | C** |
| 0-1500 | 1500D-.1 | 1500D-1 | 1500D-5 | 1500D-.3V | 1500D-1V | 1500D-5V | D |
| 0-2000 | 2000D-.1 | 2000D-1 | 2000D-5 | 2000D-.3V | 2000D-1V | 2000D-5V | D |
| 0-2500 | 2500D-.1 | 2500D-1 | 2500D-5 | 2500D-.3V | 2500D-1V | 2500D-5V | D |



ORDERING INFORMATION

Example: 1500A Input, with a 0.333Vac Output. Sensor size D
CTY-1500D-.3V

Optional inputs and outputs are available, consult factory.

* 0.1Aac output models have an internal voltage-clamping circuit which limits the output voltage to less than 8Vac. CT secondaries may be opened safely without disconnecting the primary. These models are also suitable for use with WL50 series Watt/Watthour transducers.

** UL Recognition does not apply to C-size sensors.

SPECIFICATIONS

For use over insulated conductors only!

INPUT

Current See table
Over-current 1.2 X rating
Frequency Range 50-60Hz

OUTPUT

Signal See table
Burden, Sensor Size A
1Aac models 50Aac 0.2VA
100Aac 0.5VA
200Aac 1VA
Burden, Sensor Sizes B, C and D
1Aac, 5Aac models 100Aac 1VA
200Aac, 300Aac 2VA
400Aac through 800Aac 5VA
1000Aac through 2500Aac 10VA
Loading 0.33Vac, 1Vac, 5Vac models $\geq 500k\Omega$
0.1Aac models $\leq 10\Omega$

DIELECTRIC TEST

Input to Output 2500Vac, 1min.

ACCURACY

0-0.1Aac models 0.30% Metering Class
0-1Aac models, sensor size "A" $\pm 1\%$ F.S.
0-5Aac models $\pm 1\%$ F.S.
All other models $\pm 0.5\%$ F.S.

MECHANICAL

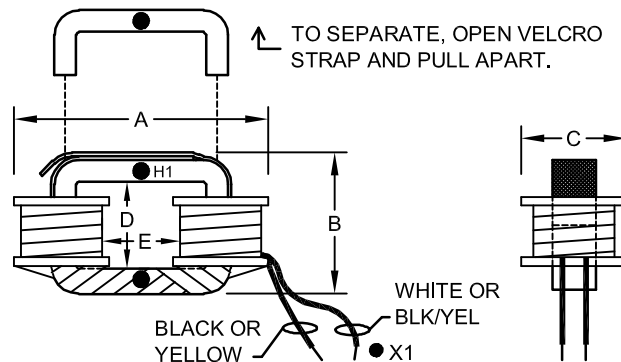
Operating Temperature 55°C Max.

SENSOR DIMENSIONS

| SENSOR SIZE | DIMENSIONS (inches) | | | | | WT. (lbs.) |
|----------------|---------------------|-------|------|-------|------|---------------|
| | A | B | C | D | E | |
| A | 2.80 | 2.00 | 1.12 | 1.13 | 0.85 | 0.4 |
| B | 3.85 | 3.80 | 1.30 | 2.40 | 1.25 | 0.8 |
| C | 6.00 | 4.90 | 1.60 | 3.15 | 2.90 | 1.5 |
| D | 7.75 | 12.00 | 2.20 | 11.00 | 3.10 | 5.2 |

LEAD LENGTHS

5Aac models 24", 14AWG, White (X1) & Black
0.1Aac models 72", 16AWG, Blk/Yel (X1) & Yellow
All other models 72", 16AWG, White (X1) & Black



Dwg# 0902-00878-B

OHIO SEMITRONICS, INC.

4242 REYNOLDS DRIVE * HILLIARD, OHIO * 43026-1264
PHONE: (614) 777-1005 * FAX: (614) 777-4511
WWW.OHIOSEMITRONICS.COM * 1-800-537-6732