

Features

Additional Colors/Materials Available
 Color Clear Encapsulation
 Low Current Requirements
 High Light Output
 IC Compatible
 Excellent Character Appearance

Applications

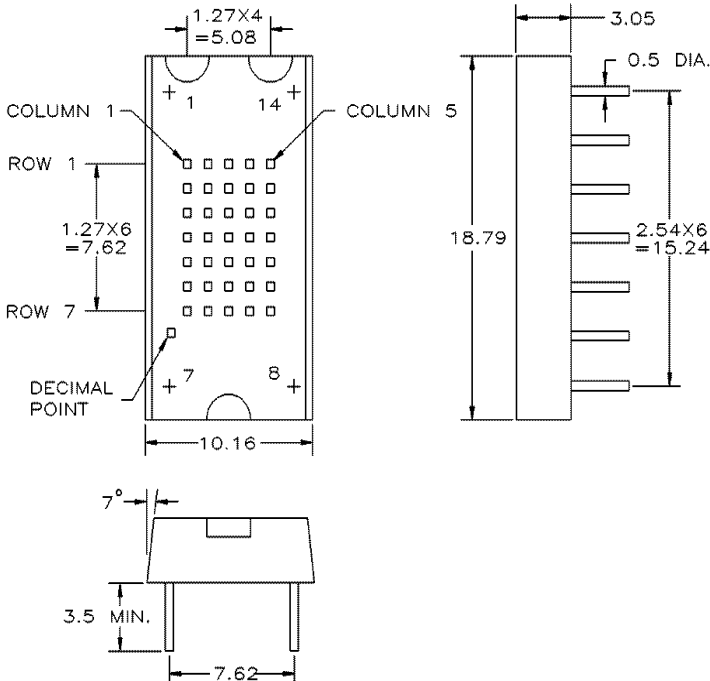
VMS
 Message Signs

Notes

All Dimensions are in millimeters.
 Tolerance is $\pm 0.25\text{mm}$ unless otherwise stated.
 The slope angle of any pin may be $\pm 5.0^\circ$ MAX.
 Operating Temperature: $-25 \sim +85$
 Storage Temperature: $-25 \sim +100$
 Other face/epoxy colors available.
 Specifications subject to change without notice.

Part Number	PWL λ_p	Material	Emitted Color	Face Colors		Maximum Ratings			Optical and Electrical Characteristics						Pin Out	
				Epoxy Color	Surface Color	IF	VR	PD	Forward Voltage VF			Reverse Current IR		Luminous Intensity IV		
									typ.	max.	IF@	max.	VR@	typ. dot		IF@
MTAN2135-AG	567	GaP	YG	Green	Green	30	5.00	85.00	2.10	3.00	20mA	100	5V	.90	10mA	1
MTAN2135-CG	567	GaP	YG	Green	Green	30	5.00	85.00	2.10	3.00	20mA	100	5V	.90	10mA	2
MTAN4135-AHR	635	GaAsP	HR	Red	Red	30	5.00	85.00	2.10	3.00	20mA	100	5V	1.00	10mA	1
MTAN4135-AO	635	GaAsP	HR	Orange	Orange	30	5.00	85.00	2.10	3.00	20mA	100	5V	1.00	10mA	1
MTAN4135-CHR	635	GaAsP	HR	Red	Red	30	5.00	85.00	2.10	3.00	20mA	100	5V	1.00	10mA	2
MTAN4135-CO	635	GaAsP	HR	Orange	Orange	30	5.00	85.00	2.10	3.00	20mA	100	5V	1.00	10mA	2
MTAN7135M-11A	660	GaAlAs	UR	Red	Red	30	4.00	70.00	1.70	2.20	20mA	100	4V	13.70	20mA	1
MTAN7135M-21C	660	GaAlAs	UR	Red	Red	30	4.00	70.00	1.70	2.20	20mA	100	4V	13.70	20mA	2
Units	nm	-	-	-	-	mA	V	mW	V	-	μA	-	mcd	-	-	-

Package Dimensions and Pin Functions



PINOUT 1

COLUMN ANODE
 PIN NO. FUNCTION

1. ANODE COLUMN 2
2. CATHODE ROW 1
3. CATHODE ROW 3
4. CATHODE ROW 4
5. ANODE COLUMN 1
6. NO PIN
7. ANODE DP
8. ANODE COLUMN 3
9. CATHODE ROW 7 & DP
10. CATHODE ROW 6
11. CATHODE ROW 5
12. CATHODE ROW 2
13. ANODE COLUMN 5
14. ANODE COLUMN 4

PINOUT 2

COLUMN CATHODE
 PIN NO. FUNCTION

1. CATHODE COLUMN 2
2. ANODE ROW 1
3. ANODE ROW 3
4. ANODE ROW 4
5. CATHODE COLUMN 1
6. NO PIN
7. CATHODE DP
8. CATHODE COLUMN 3
9. ANODE ROW 7 & DP
10. ANODE ROW 6
11. ANODE ROW 5
12. ANODE ROW 2
13. CATHODE COLUMN 5
14. CATHODE COLUMN 4