

NOTES: UNLESS OTHERWISE SPECIFIED

1. FOR GENERAL SERIES SPECIFICATIONS, SEE SD25-0000(SMA)&SD60-0000(N SIDES).

2. MATERIAL SPECIFICATIONS:

CONTACT: COPPER ALLOY  
 INSULATOR:TEFLON PER ASTM D1710  
 BODY: STAINLESS STEEL PER ASTM A582

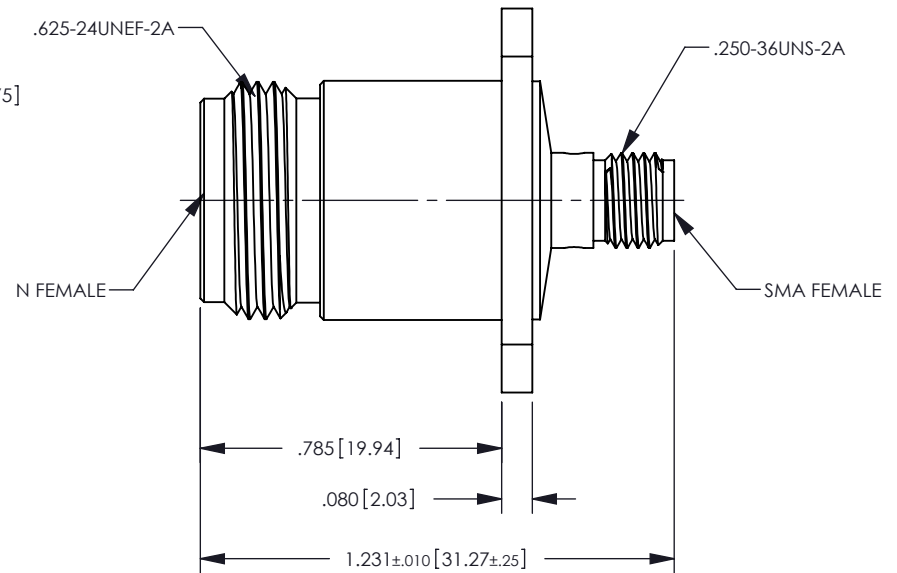
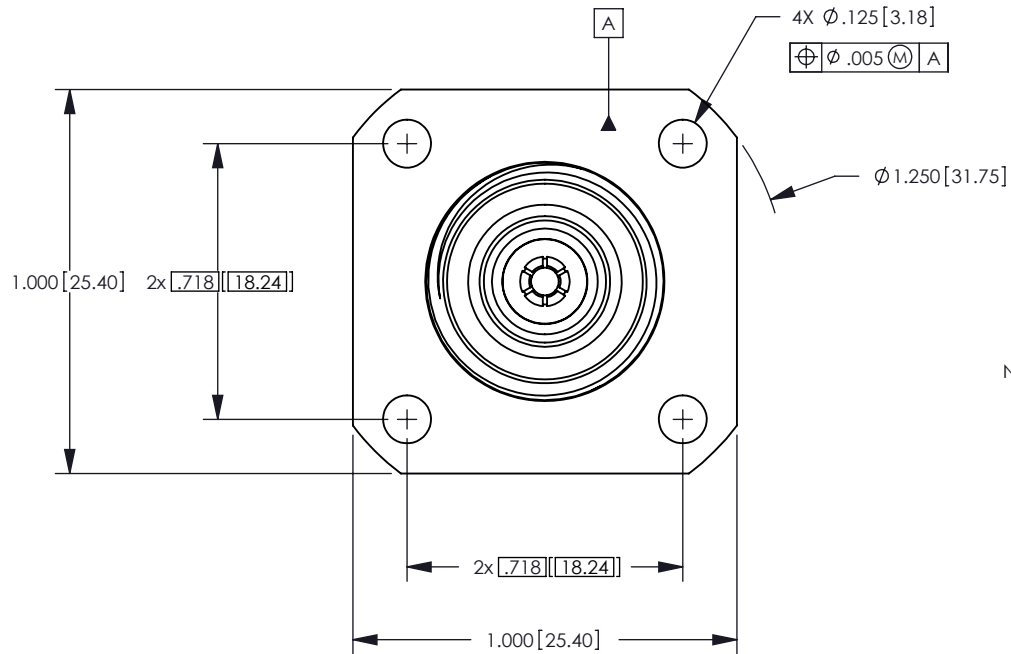
3. FINISH SPECIFICATIONS:

CENTER CONTACT: .000050 MIN Gold PER ASTM B488,  
 OVER .000080 MIN Nickel PER AMS-QQN-290  
 BODY: PASSIVATE PER ASTM A967 (RoHS)

4. ELECTRICAL:

IMPEDANCE: 50 OHM  
 VSWR: 1.15 MAX  
 FREQUENCY RANGE:DC~18GHz

REV	DESCRIPTION	BY DATE	APPD
A	RELEASE DRAWING PER ER23283	COL 04/09/10	Dcam



CATALOG P/N:250G-087-00002P

PER ASME Y14.5M-1994 UNLESS OTHERWISE SPECIFIED: DIMENSIONS ARE IN INCHES [MM] TOLERANCES: DECIMAL: .XX [X.X] ± .01 [0.3] .XXX [X.XX] ± .005 [0.13] .XXXX [X.XXX] ± .XXXX ANGLES: ± 2° SCALE: 2:1				by WINCHESTER ELECTRONICS Winchester Electronics Corporation 62 Barnes Industrial Road North Wallingford, Connecticut 06492					
CUSTOMER SALES DRAWING				THIRD ANGLE		SMA FEMALE TO N FEMALE ADAPTOR (ROHS COMPLIANT)			
DRAWN	DATE	APPROVED	DATE	DATE	DATE	SHT OF REV			
COL	06/03/09	Dcam	06/05/09			A SD250G-087-00002P		1 1 A	
APPROVED	DATE	APPROVED	DATE						
WPM	06/05/09	XXX	XX/XX/XX						